

# **PRALL'S ISLAND COLONIAL WATERBIRD NESTING HABITAT ENHANCEMENT**

## **REMOVAL AND TREATMENT OF INVASIVE TREE SPECIES LOCATED ON PRALL'S ISLAND WILDLIFE PRESERVE**

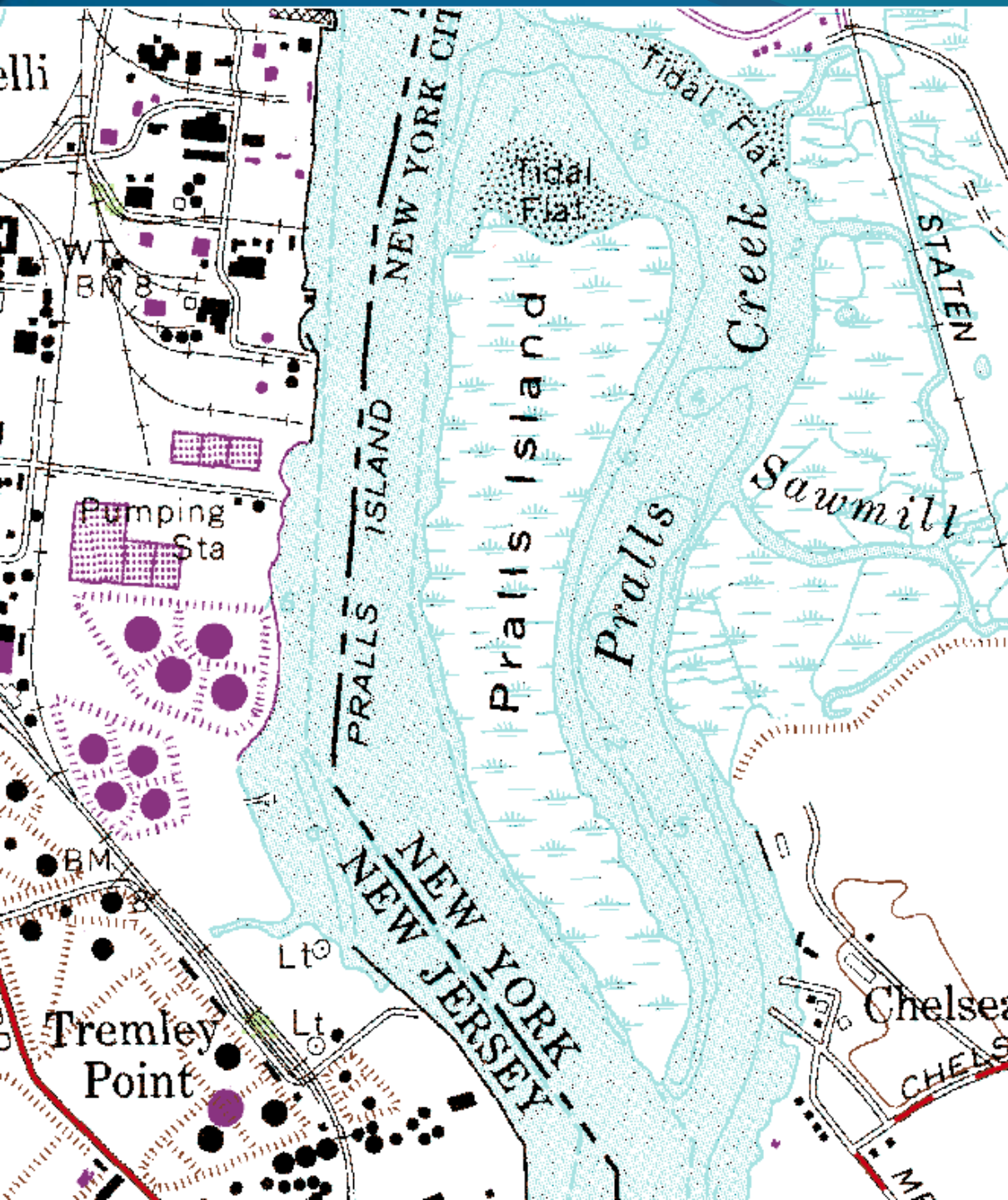
**CONTRACT NUMBER: R122-109MA**

City of New York Parks & Recreation  
Natural Resources Group (NRG)<sup>1</sup> and Capital Division<sup>2</sup>

<sup>1</sup>Alex Summers, Tim Wenskus

<sup>2</sup>Gail Wittwer-Laird, Mike Browne





# LOCATION OF PRALL'S ISLAND

Location: In the Arthur Kill,  
west of Prall's Creek;

One mile south of the  
Goethals Bridge;

Borough of  
Staten Island



# PURPOSE

To allow colonial wading bird populations to recover from a decline in breeding success by increasing nesting habitat at Prall's Island.



Great Blue Heron



Juvenile Black-crowned Night Heron



Great Egret chicks

# ACCESS/ MOBILIZATION

Article 33

Prall's Island must be accessed by boating vessel.

Boats must land at **DP2**, the only approved drop point.

Draft cannot exceed 30".





DP2

# LANDING AREA FOR ANCHORING BOATS



No potable water supply. No sanitary facilities. Items left overnight at own risk.

# STAGING AREA

- 1) The staging area will be marked and is located adjacent to the Landing Zone (DP2).
- 2) All supplies and materials not in use shall remain in the designated staging area.
- 3) Portable toilet systems brought to the island will be assigned a designated area for use.
- 4) Portable systems that use bags for collection must be emptied and removed from the island each day.



# STAGING AREA



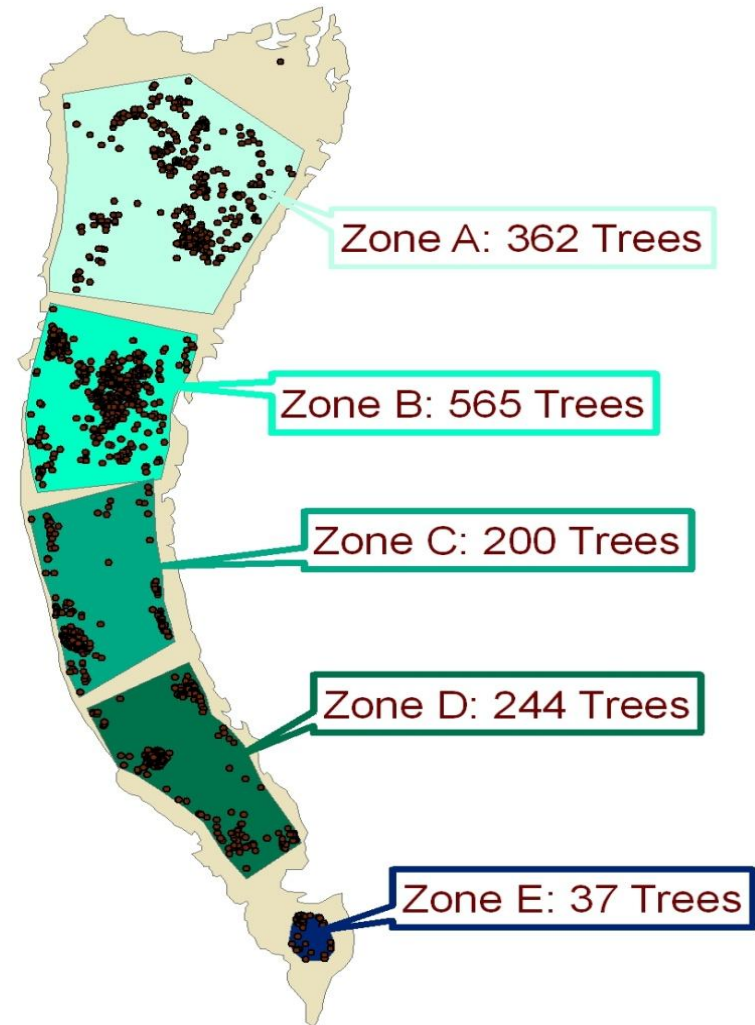
# ZONES

The island is divided into 5 zones:

**A, B, C, D, E**

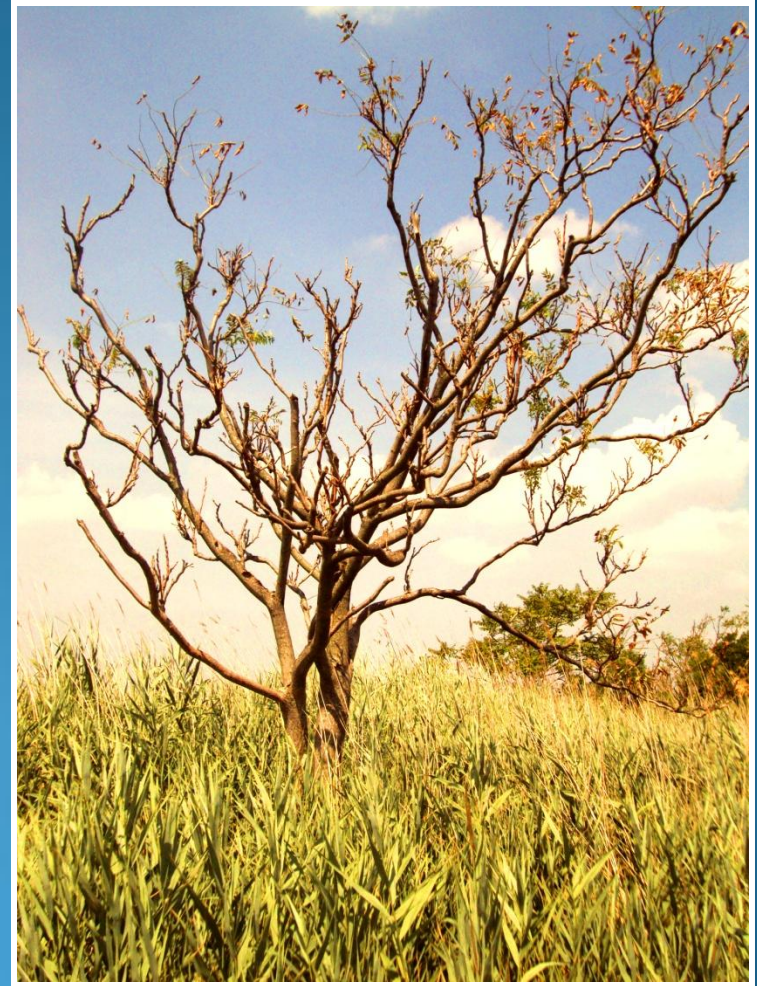
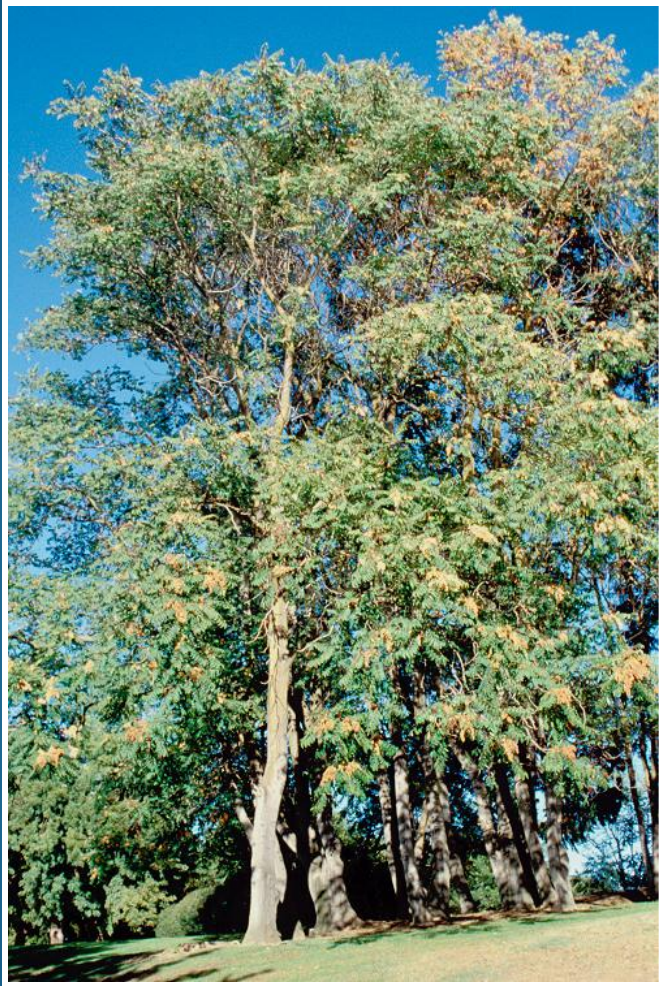
Trees for removal are located and flagged and/or marked within these zones.

## Ailanthus Removal Zones





# Recognizing *Ailanthus altissima*





# Ailanthus compound leaves





# Leaf scars (left), Bark close-up (middle), Trunk(right)



# Flowers (left) and Fruits (right)





# PLAN OVERVIEW

- 1) Remove invasive *Ailanthus* trees which do not support nest habitat (Item No.3).
- 2) All trees to be cut are marked with neon **orange** flagging.
- 3) Felled trees should be cut into 4' sections and piled on site. (Item No.4).
- 4) All debris in nearest brush pile. No chipping. (Item No.3)
- 5) Treat stumps with herbicide (Item No.5). Stumps no more than ankle height.



# HERBICIDE

## Item No. 5

- “Certified Pesticide Applicator” certification in commercial category 3A from NYS DEC, or equivalent.
- Glyphosate herbicide such as *Accord XRT*, *Accord XRT II*, *RoundUp Pro*, *Razor Pro*, or a NYCDPR NRG approved equivalent.

## METHODS

- Apply to cut stumps within 5-15 minutes of cutting.
- Apply with brush or hand-held applicator. No spraying.
- Encircle top inside bark layer along the cambium
  - to prevent re-growth and sprouting.



# PAYMENT SCHEDULE FOR TREE REMOVAL

Item No. 3

TREE DBH	TREE UNITS	PAYMENT PER TREE REMOVED
Over 6"-12"	1.0 (base unit)	100% of unit bid price
Over 12"-18"	1.25	125%
Over 18"-24"	1.5	150%
Over 24"-30"	2.0	200%

# PROTECTING SENSITIVE AREAS

## Article 14 a

- 1) Prall's contains highly sensitive native vegetation.
- 2) Official foot trails must be utilized at all times to reduce impact.
- 3) Salt marshes and wetlands are to be avoided entirely.
- 4) Trees within "Tree Protection Zones", as determined by Landscape Contractor, will be protected with tree guards or fencing.
- 5) In the event of damages to trees, shrubs or sensitive habitats as a result of the project, the NYC DPR Natural Resources Group will require restoration/mitigation measures.



Salt marsh comprised of *Spartina alterniflora*



# PHOTOGRAPHIC DOCUMENTATION

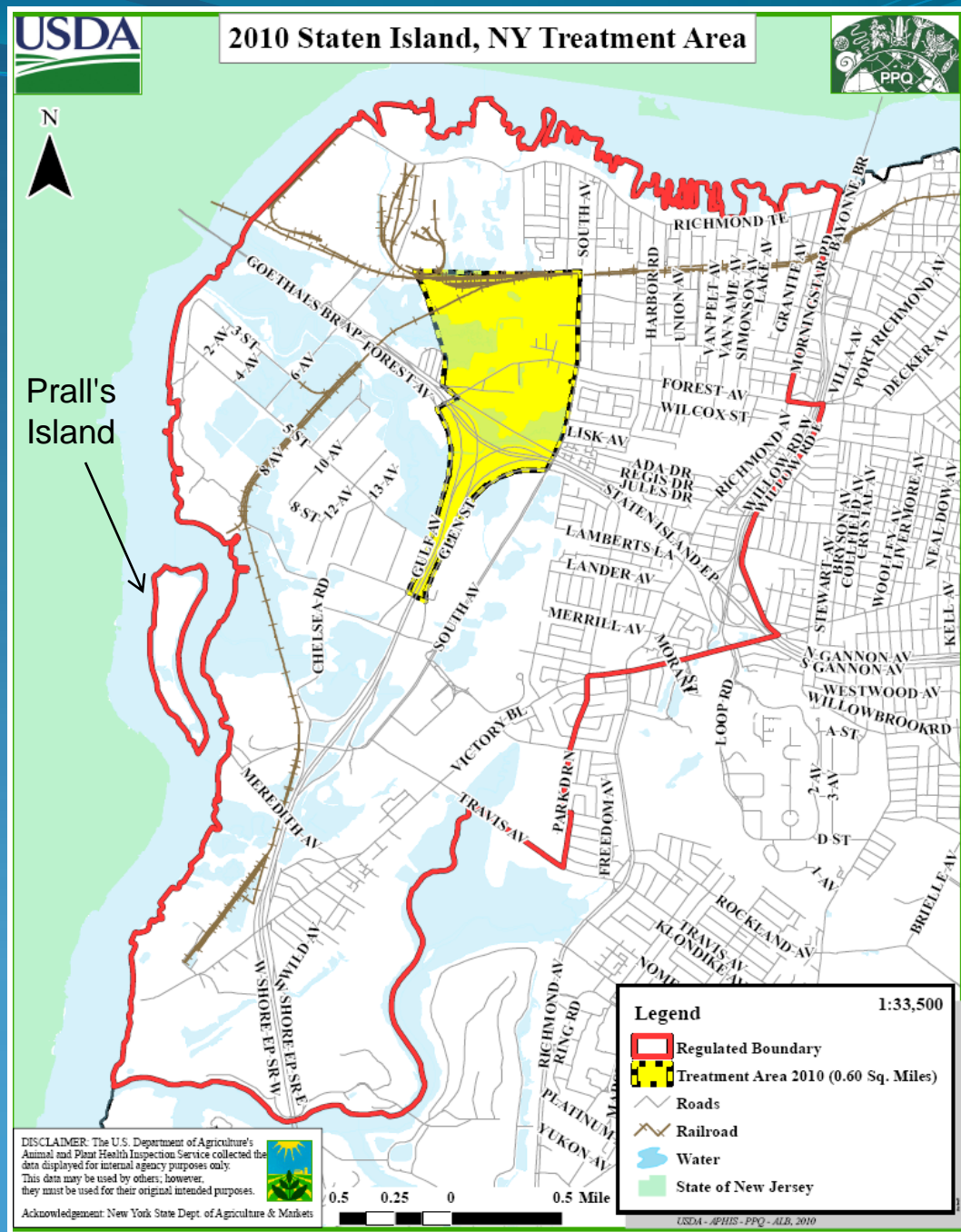
## Article 12

- A professional photographer will document the progression of work specified in the contract.
- Photos to capture work from established photo stations
  - I. Prior to construction
  - II. At 1/3 completion
  - III. At 2/3 completion
  - IV. After final completion
- Photo submission formats. ALL 35 mm, COLOR.
  - Negatives: 35 mm format
  - Prints: 4"x 6" (phases I, III), 8" x 10" (phases I, IV)
  - Quantity: dependant on contract
  - 4 CD-Rs
- Refer to Article 12 for more details.

# ASIAN LONGHORNED BEETLE

## Article 14 b.

- 1) In 2007, ALB was eradicated from Prall's Island. The island is currently an ALB Quarantine Zone.
- 2) Must submit a copy of a valid Compliance Agreement issued by the State of New York Department of Agriculture and Markets, Division of Plant Industry (Item No.3).





# CONDITIONS

Poison Ivy occurs throughout the island. Supplies should include soaps or creams designed to remove urushiol oils.



# CONDITIONS

Prepare for inclement weather as there is no shelter on site.

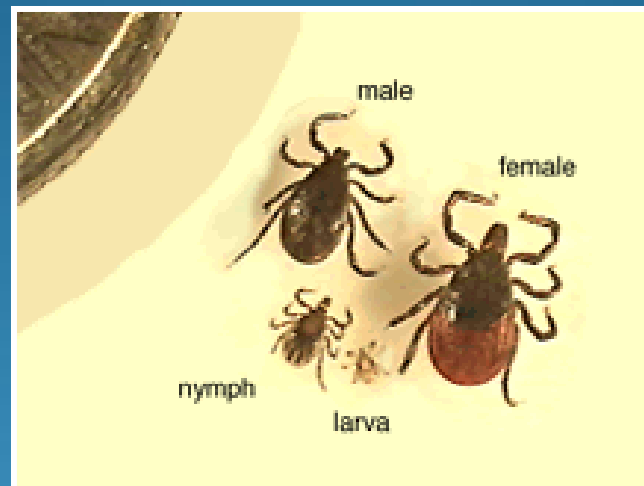
Expect contact with brambles such as blackberry and rose.

Expect possible encounters with mosquitoes, ticks, and/or biting flies.





# Tick Identification



# **PRALL'S ISLAND COLONIAL WATERBIRD NESTING HABITAT ENHANCEMENT**

## **REMOVAL AND TREATMENT OF INVASIVE TREE SPECIES LOCATED ON PRALL'S ISLAND WILDLIFE PRESERVE**

**CONTRACT NUMBER: R122-109MA**

City of New York Parks & Recreation  
Natural Resources Group (NRG)<sup>1</sup> and Capital Division<sup>2</sup>

<sup>1</sup>Alex Summers, Tim Wenskus

<sup>2</sup>Gail Wittwer-Laird, Mike Browne

