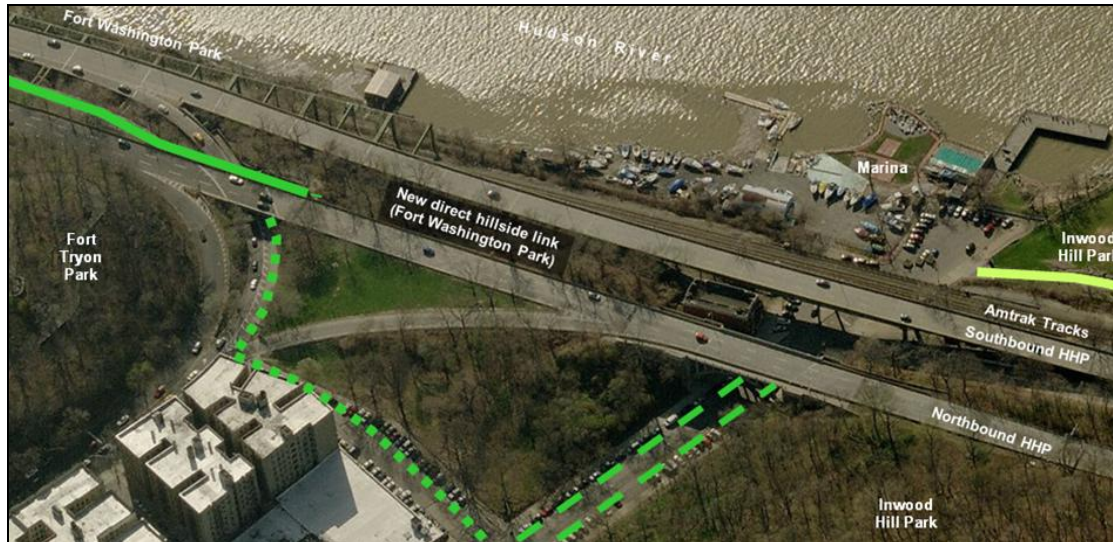


A PlaNYC Regional Park for Northern Manhattan: Proposed Improvements to Fort Washington Park

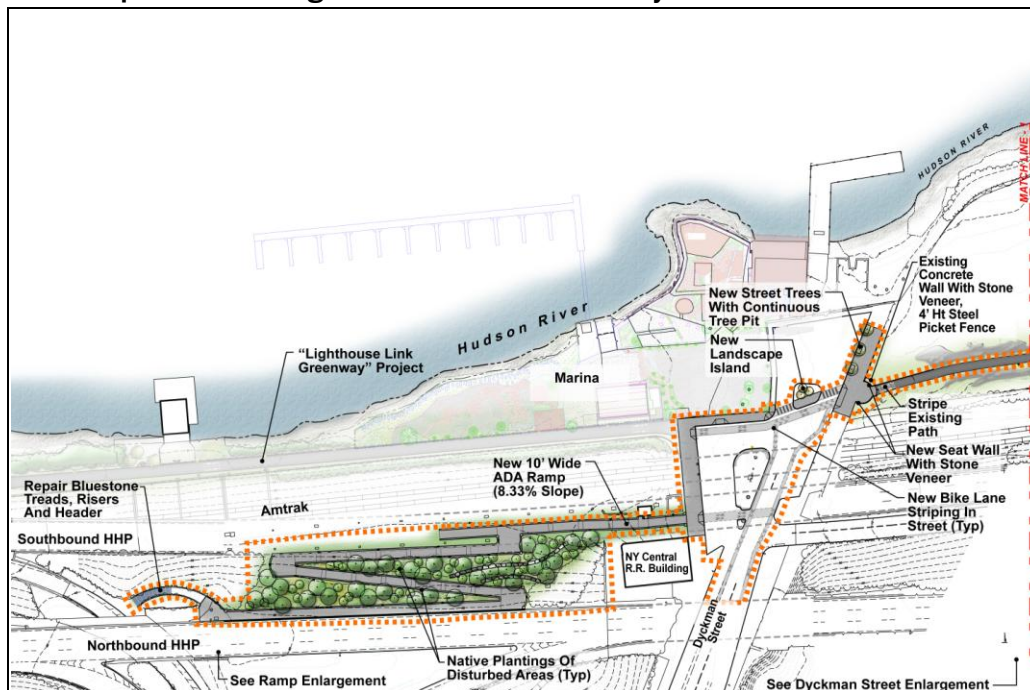
Dyckman Street Ramp

The direct, car-free connection between Fort Washington Park and Inwood Hill Park will eliminate the 3-block detour that bicyclists and pedestrians currently have to take.

Project area



The ramp meets ADA guidelines for accessibility.



Dyckman Street Entrance to Inwood Hill Park

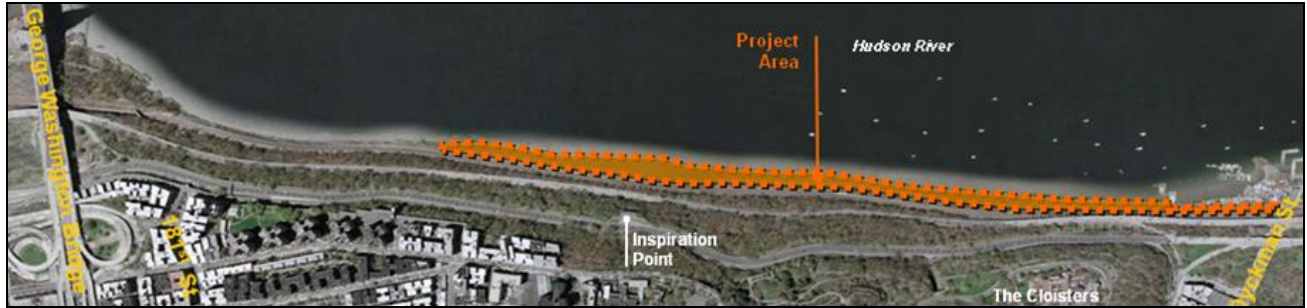
The new entrance on the north side of Dyckman Street will welcome visitors to Inwood Hill Park with its plaza and granite stone wall. A similar plaza area on the south side of Dyckman Street will be built at the Fort Washington Park entrance.



Lighthouse Link/Fort Washington Park North

One mile of new waterfront greenway will be added in the northern part of the park starting at Dyckman Street.

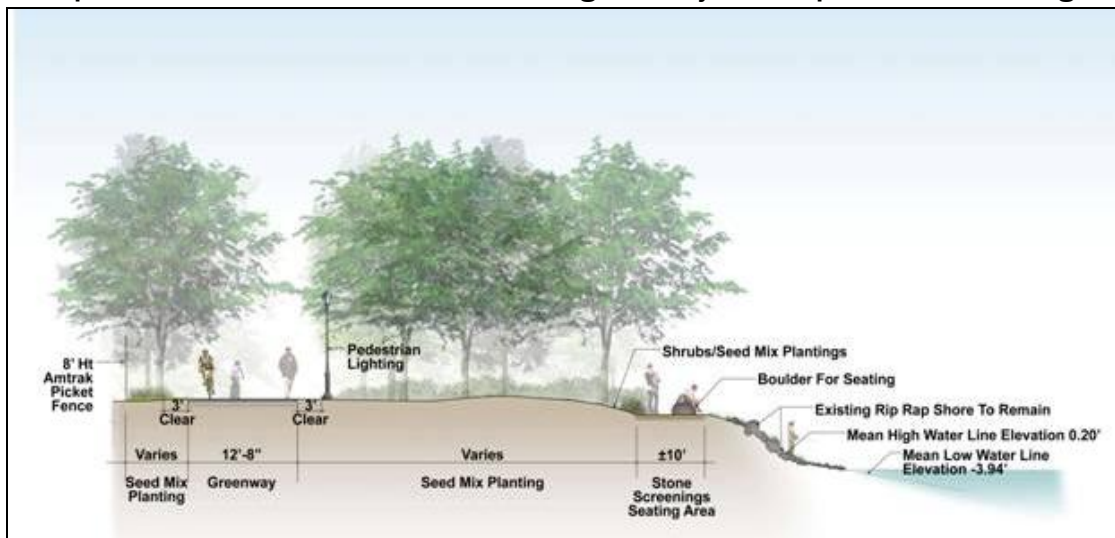
Project area



The existing undeveloped path will be formalized and invasive species will be removed.



Side paths like this one will lead from the greenway to viewpoints with seating areas.



The turnaround will offer views of the George Washington Bridge and New Jersey Palisades across the Hudson River.

