



Designing NYC Parks

Parks

NYC Parks by the Numbers

- 30,000 acres of land – **14% of New York City**
- 5,000 individual properties
- 1,800 basketball courts
- 1,000 playgrounds
- 800 athletic fields
- 67 public pools
- 51 recreational facilities
- 15 nature centers
- 14 miles of beaches

- More than 500 active contracts in design through construction
- Started work on more than \$600 million worth of park improvements in 2015



Project Types



John Jay Park, Manhattan



Elmhurst Park, Queens



Project Types – Playgrounds



Tecumseh Playground, Manhattan



Project Types – Multi-Purpose Courts



Betsy Head Park, Brooklyn



Highbridge Park Ballfields, Manhattan



Project Types – Sports Courts & Fields



Harlem River Park, Manhattan



Riverside Park, Manhattan



Project Types – Multi-Use Synthetic Turf Fields



River Avenue Skate Park, Bronx



Faber Park Skate Park, Staten Island



Project Types – Skate Parks



Asser Levy Playground, Manhattan



Lieutenant John H. Martinson Playground, Staten Island



Project Types – Adult Fitness



J.J. Byrne Playground, Bronx



Titanic Park, Manhattan



Project Types – Seating Areas and Community Gathering Places



Randall's Island Connector, Bronx



Riverside Park Cantilever, Manhattan



Project Types – Bikeways



Bikeway terminus at White Plains Road



Birdseye view of bus stop and gathering space



Pedestrian path from Pelham Parkway West to Cruger Ave.

Pelham Parkway Malls, Bronx



Project Types – Parkways & Malls



Pier 42, Manhattan



Rockaway Boardwalk, Queens



Project Types – Waterfront Parks & Boardwalks



Calvert Vaux Park, Brooklyn



Harlem River Park, Manhattan



Project Types – Shoreline & Natural Areas Restoration



Fort Totten Park Conceptual Master Plan, Queens



Photo Credit: Michael Moran



Project Types – Adaptive Reuse of a Historic Property

Nancy Owens Studio LLC
LANDSCAPE ARCHITECTURE • URBAN DESIGN

Bartow – Pell Mansion Museum

Formal Garden Rehabilitation

Existing Conditions, Site Analysis & Schematic Plan
March 14, 2013



Bartow Pell Mansion Museum Formal Garden Rehabilitation, Bronx



NYC Parks

Project Types – Landscape Rehabilitation & Restoration

MARK K MORRISON ASSOCIATES LTD
LANDSCAPE ARCHITECTURE

An aerial photograph of John F. Murray Playground in Queens, New York. The park is a lush green space with numerous trees and winding paths. Several areas are highlighted with white text labels: 'Dogs' near a fenced-in dog park area on the left; 'Swing' near a swing set in the center; 'Relax' in a grassy area; 'Garden' near a garden bed in the foreground; 'Play' near a colorful play structure; 'Sports' near a green sports field on the right; and 'Gather' near a paved area with benches. In the background, a dense urban landscape with various buildings is visible under a clear blue sky. The title 'Multi-use Parks' is at the top, and 'John F. Murray Playground, Queens' is at the bottom.

An aerial photograph of John F. Murray Playground in Queens, New York. The park is a lush green space with numerous trees and winding paths. Several areas are highlighted with white text labels: 'Dogs' near a fenced-in dog park area on the left; 'Swing' pointing to a swing set in the center; 'Relax' pointing to a grassy area with a bench; 'Garden' pointing to a garden bed with various plants; 'Play' pointing to a colorful play structure; 'Sports' pointing to a green sports field on the right; and 'Gather' pointing to a paved area with a large sculpture. In the background, a dense urban landscape with various buildings is visible under a clear blue sky. The title 'Multi-use Parks' is at the top, and 'John F. Murray Playground, Queens' is at the bottom.

An aerial photograph of John F. Murray Playground in Queens, New York. The park is a lush green space with numerous trees and a winding path. In the foreground, there is a large, curved, light-colored paved area labeled 'Gather'. To the left, a fenced-in area is labeled 'Dogs'. In the center, a grassy area is labeled 'Relax'. To the right, there is a playground area with colorful equipment labeled 'Play', and a swing set labeled 'Swing'. Further right, a green sports field is labeled 'Sports'. The background shows a dense urban landscape with various buildings, including a large brick building on the left and a tall skyscraper in the distance. The title 'Multi-use Parks' is at the top, and 'John F. Murray Playground, Queens' is at the bottom.

Multi-use Parks

Dogs

Swing

Play

Sports

Relax

Swing

Gather

Garden

John F. Murray Playground, Queens

An aerial photograph of John F. Murray Playground in Queens, New York. The park is a lush green space with numerous trees and winding paths. In the foreground, there is a large, curved concrete area labeled 'Gather'. To the left, a fenced-in area is labeled 'Dogs'. In the center, a grassy area is labeled 'Relax'. To the right, there is a playground area with various equipment labeled 'Play', and a swing set labeled 'Swing'. Further right, there is a green field labeled 'Sports'. The background shows a dense urban landscape with various buildings and skyscrapers under a clear blue sky. The title 'Multi-use Parks' is at the top, and 'John F. Murray Playground, Queens' is at the bottom.

An aerial photograph of John F. Murray Playground in Queens, New York. The park is a lush green space with numerous trees and winding paths. In the foreground, there's a large, curved, light-colored paved area labeled 'Gather'. To the left, a fenced-in area is labeled 'Dogs'. In the center, a grassy area is labeled 'Relax'. To the right, there's a playground with colorful equipment labeled 'Play', and a swing set labeled 'Swing'. Further right, a green sports field is labeled 'Sports'. The background shows a dense urban landscape with various buildings, including a prominent brick building on the left and a tall skyscraper in the distance. The title 'Multi-use Parks' is at the top, and 'John F. Murray Playground, Queens' is at the bottom.

Multi-use Parks

Dogs

Swing

Play

Swing

Relax

Gather

Garden

Sports

John F. Murray Playground, Queens

An aerial photograph of John F. Murray Playground in Queens, New York. The park is a lush green space with numerous trees and winding paths. In the foreground, there is a large, curved concrete area labeled 'Gather'. To the left, a fenced-in area is labeled 'Dogs'. In the center, a grassy area is labeled 'Relax'. To the right, there is a playground area with various equipment labeled 'Play', and a swing set labeled 'Swing'. Further right, there is a green field labeled 'Sports'. The background shows a dense urban landscape with various buildings and skyscrapers under a clear blue sky. The title 'Multi-use Parks' is at the top, and 'John F. Murray Playground, Queens' is at the bottom.

An aerial photograph of John F. Murray Playground in Queens, New York. The park is a lush green space with numerous trees and winding paths. In the foreground, there's a large, curved, light-colored paved area labeled 'Gather'. To the left, a fenced-in area is labeled 'Dogs'. In the center, a grassy area is labeled 'Relax'. To the right, there's a playground with colorful equipment labeled 'Play', and a swing set labeled 'Swing'. Further right, a green sports field is labeled 'Sports'. The background shows a dense urban landscape with various buildings, including a prominent brick building on the left and a tall skyscraper in the distance. The title 'Multi-use Parks' is at the top, and 'John F. Murray Playground, Queens' is at the bottom.

Multi-use Parks

Dogs

Swing

Play

Swing

Relax

Gather

Garden

Sports

John F. Murray Playground, Queens

An aerial photograph of John F. Murray Playground in Queens, New York. The park is a lush green space with numerous trees and winding paths. In the foreground, there's a large, curved, light-colored paved area labeled 'Gather'. To the left, a fenced-in area is labeled 'Dogs'. In the center, a grassy area is labeled 'Relax'. To the right, there's a playground with colorful equipment labeled 'Play', and a swing set labeled 'Swing'. Further right, a green sports field is labeled 'Sports'. The background shows a dense urban landscape with various buildings, including a prominent brick building on the left and a tall skyscraper in the distance. The title 'Multi-use Parks' is at the top, and 'John F. Murray Playground, Queens' is at the bottom.

Multi-use Parks

Dogs

Swing

Play

Swing

Relax

Gather

Garden

Sports

John F. Murray Playground, Queens

An aerial photograph of John F. Murray Playground in Queens, New York. The park is a lush green space with numerous trees and winding paths. Several areas are highlighted with white text labels: 'Dogs' near a fenced-in dog park area on the left; 'Swing' pointing to a swing set in the center; 'Relax' pointing to a grassy area with a bench; 'Garden' pointing to a garden bed with various plants; 'Play' pointing to a colorful play structure; 'Sports' pointing to a green sports field on the right; and 'Gather' pointing to a paved area with a large sculpture. In the background, a dense urban landscape with various buildings is visible under a clear blue sky. The title 'Multi-use Parks' is at the top, and 'John F. Murray Playground, Queens' is at the bottom.

An aerial photograph of John F. Murray Playground in Queens, New York. The park is a lush green space with numerous trees and winding paths. Several areas are highlighted with white text labels: 'Dogs' near a fenced-in area on the left; 'Swing' in two locations, one in the center and one on the right; 'Relax' in the center; 'Garden' at the bottom center; 'Play' near a colorful play structure; and 'Sports' near a green field on the right. In the background, a dense urban landscape with various buildings is visible under a clear blue sky. The title 'Multi-use Parks' is at the top, and 'John F. Murray Playground, Queens' is at the bottom.

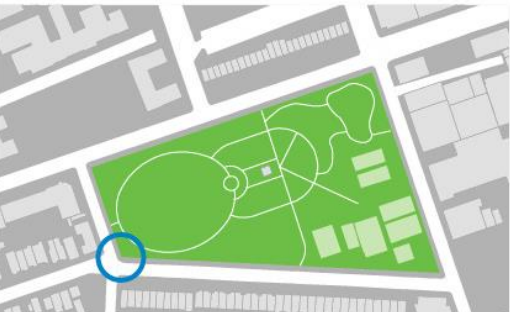
Major Initiatives



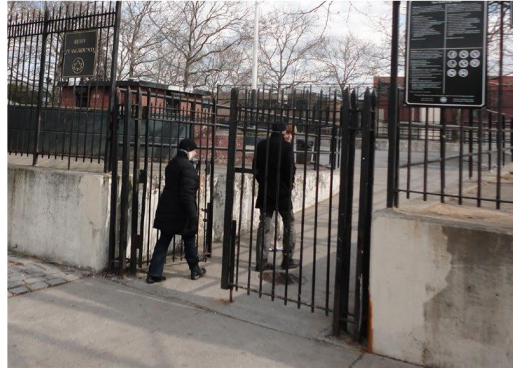
Entrances



Edges



Park-adjacent spaces



Parks Without Borders is a design approach that focuses on improving the areas where parks and neighborhoods meet: **entrances**, **edges**, and **park-adjacent spaces**.



Major Initiatives – Parks Without Borders



Accessible Parks

Make parks more welcoming and accessible to everyone

Improved Neighborhoods

Extend the beauty of parks out into communities

Vibrant Community Spaces

Transform underused spaces into centers of community



Major Initiatives – Parks Without Borders

Park Equity

- A fair distribution of resources
- An inclusive process
- New and diverse constituencies
- Emphasizing the importance of active lifestyles for people of all ages and abilities
- Improving access to and within parks
- Enhancing safety and security measures
- Enhancing park aesthetics and adding green spaces



Major Initiatives – Community Parks Initiative

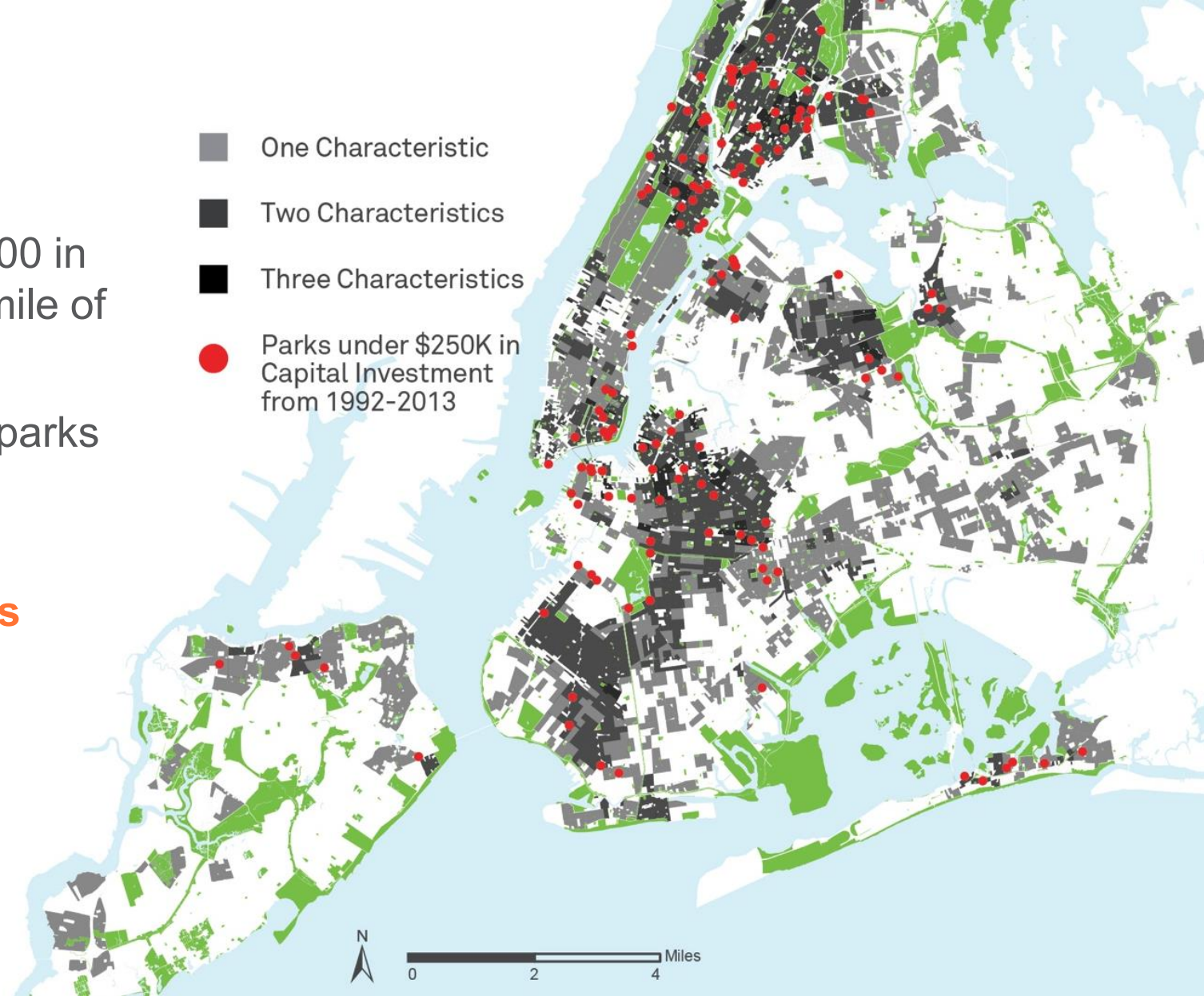
Under-resourced Parks Meeting CPI Demographic Criteria

134 parks received less than \$250,000 in capital investment and are within ¼-mile of Census tracts with 2+ of CPI criteria.

Demographics and under-resourced parks helped identify communities in which to focus investment.

2015 - Design completed for **35 parks**

2016 - Designing **12 parks**

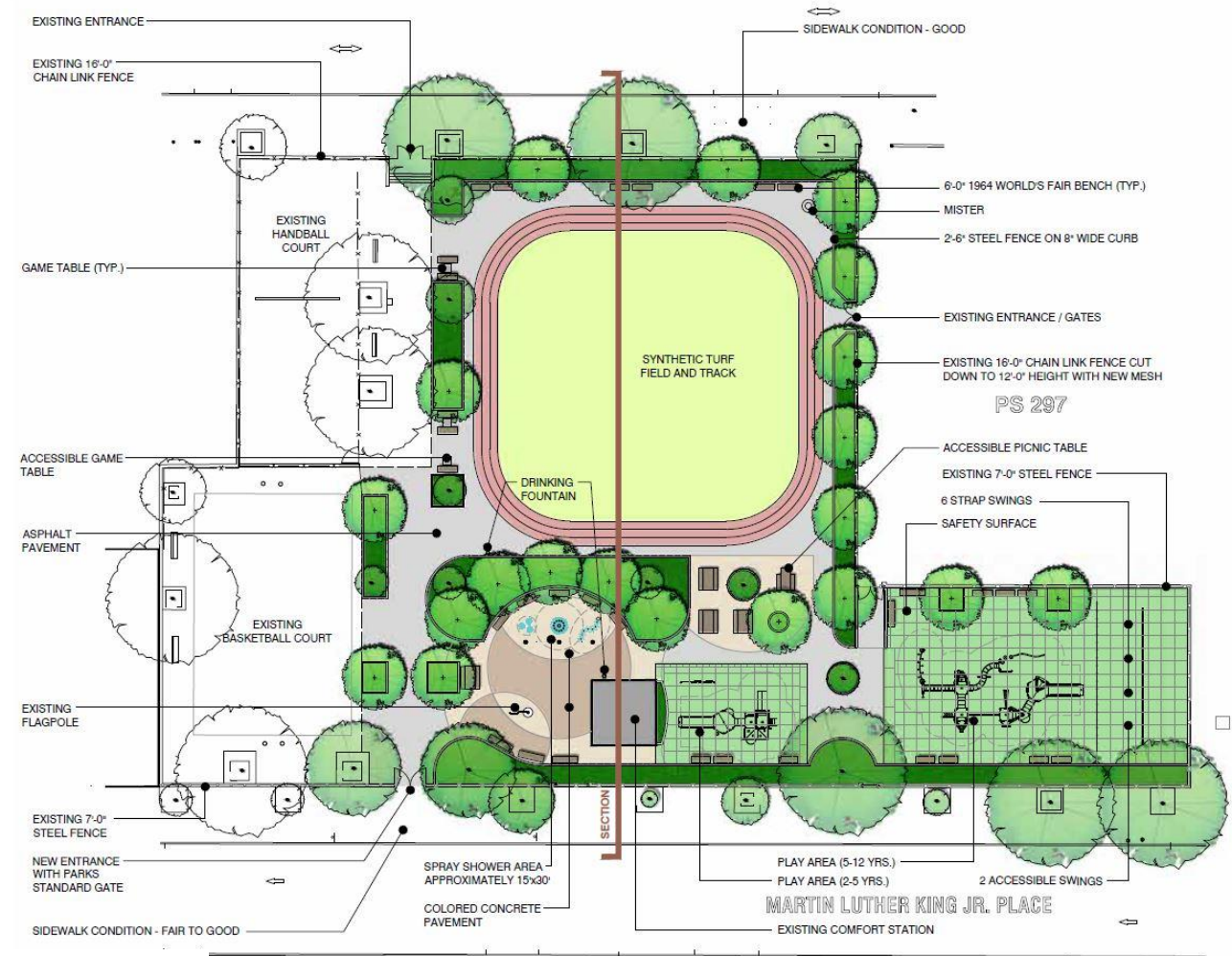


Major Initiatives – Community Parks Initiative

Asphalt Yard to Community Park



Stockton Playground, Brooklyn





Rain gardens



Permeable pavers



Street stormwater capture

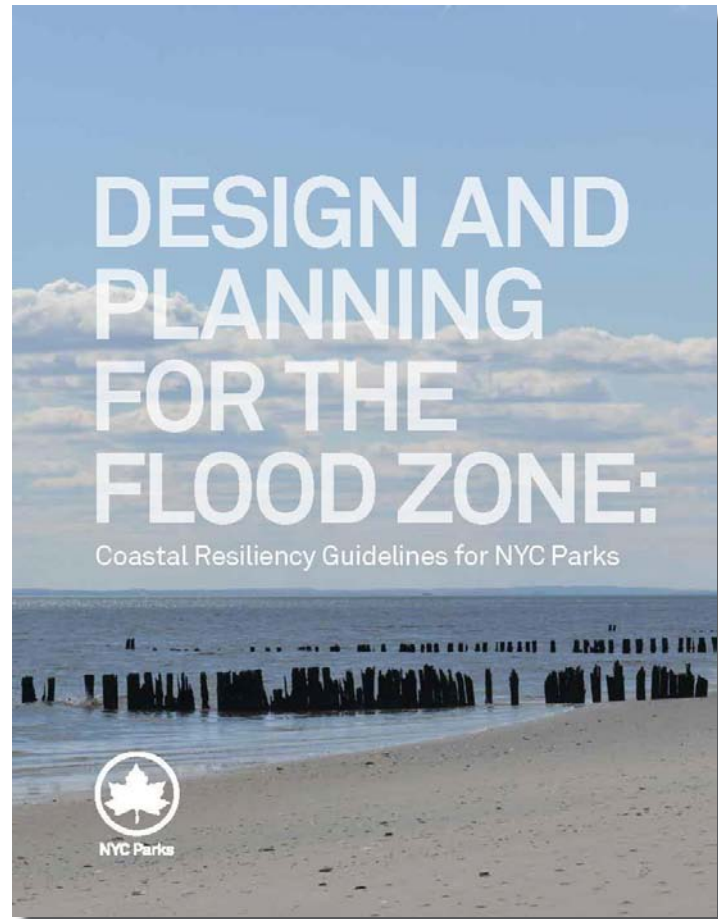


Major Initiatives – Stormwater Management with Green Infrastructure



- **Waterfront Inspections & Monitoring** for bulkheads & soft shorelines.
- **Flood Zone Design Guidelines** for parks and open spaces in the flood zone.
- **Upgrade** at-risk operations and recreation facilities.
- **Improve resilience and protection** of coastal communities, parklands, and natural areas.





Draft Flood Zone Design Guidelines
(to be released 2016)

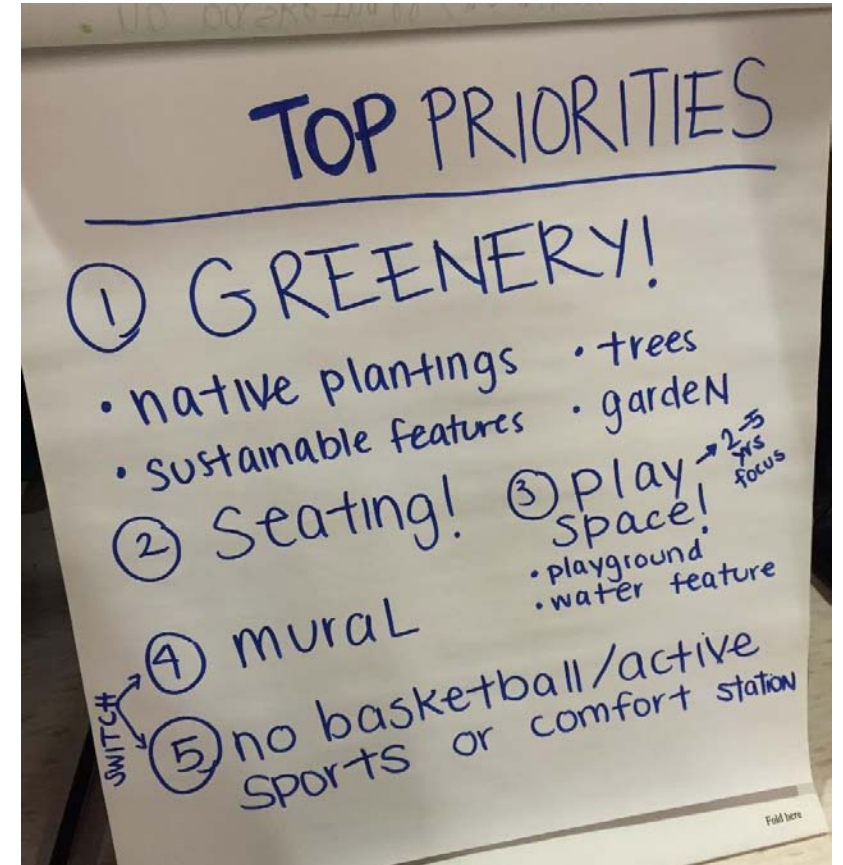
- **Bring Awareness** about unique issues faced by parks in the flood zone.
- **Identify Major Risks** associated with climate change.
- **Outline Process for Planning & Designing** parks and open spaces in the flood zone.
- **Recommend Best Practices & Resilient Materials** to be used within and near the flood zone.



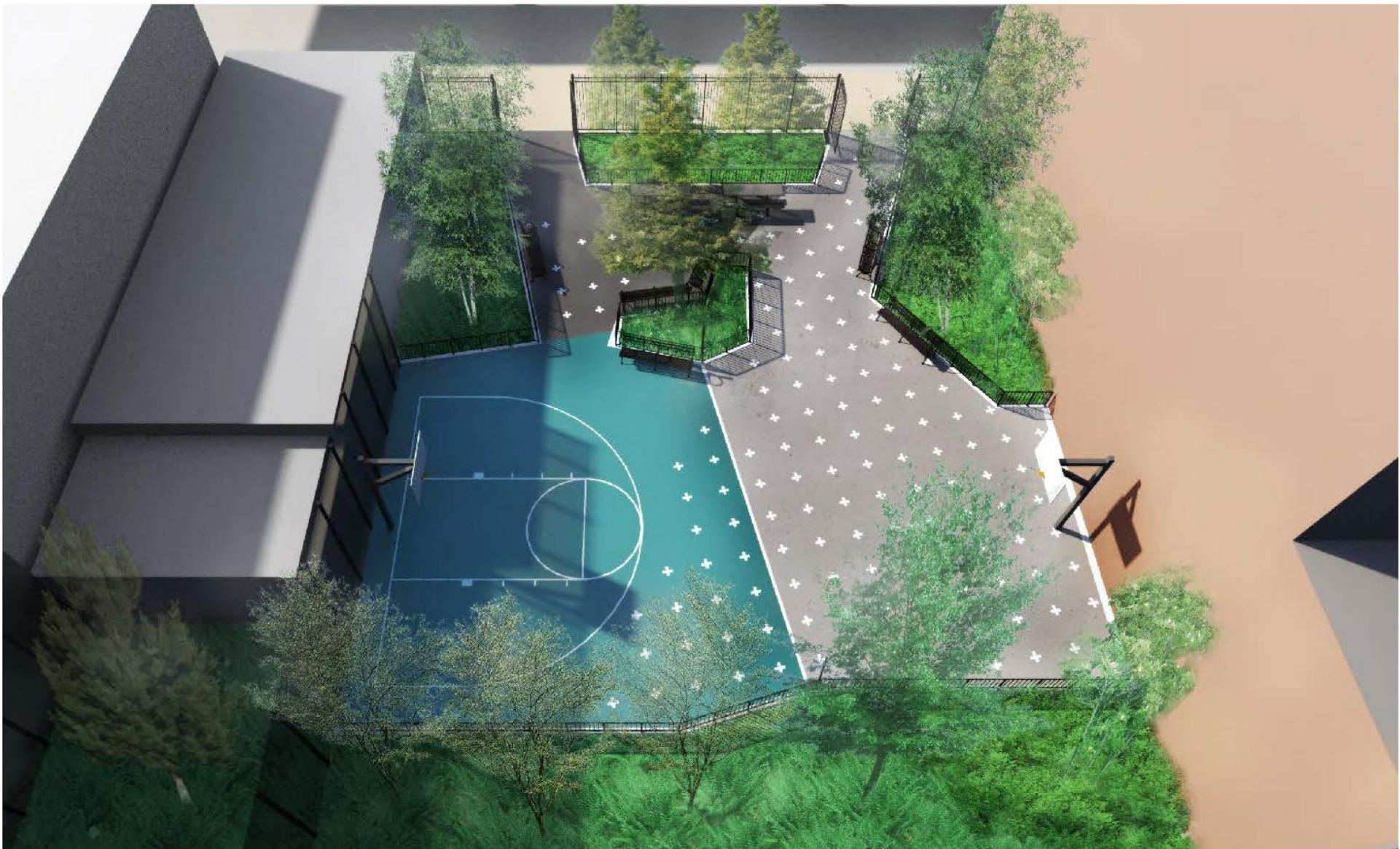
Design Principles



West 20th Street Park Scope Meeting, Manhattan



Design Principles – Engaging the Community



Seabury Park, Bronx



Design Principles – Thoughtful Site Design with Standard Materials



Cadman Plaza Park, Brooklyn



South Oxford Park, Brooklyn



Design Principles – Greening and Attention to Context



Playground 123 in Morningside Park, Manhattan

Laurelton West Playground, Queens



Design Principles – Universal Design – Beyond ADA



Sunset Park Playground, Brooklyn



Climbing opportunities



Swings



Spray showers



Tactile engagement



Playhouses



Spinners



Washington Square Park, Manhattan



Betsy Head Park Pool, Brooklyn



Design Principles – Creative Play



Fitness



Play yards



Multi-generational social seating



Skate parks



Multi-use



Welcoming entrances



Design Principles – Designing for Diverse Demographics



Thank You

Parks