

FreshkillsPark

**City of New York
Parks & Recreation
Michael R. Bloomberg, Mayor
Adrian Benepe, Commissioner**



2006 Draft Master Plan



Freshkills Park Roads

DEVELOPMENT PLAN

Connection to Richmond Hill Rd.

East Park alternative alignment

Connections to WSE
north of Fresh Kills Creek

Initial WSE Connections

Later-phase WSE improvements

Connection to Richmond
Ave via Yukon Ave

Connection to Forest Hill Rd.

**Initial WSE Connections –
\$34.7M**

Access from West Shore
Expressway to center of the site
and first park projects, including
Little South Mound and ball fields.

**Connection to Richmond Ave
via Yukon Ave - \$ 21.5M**

Connection from Richmond Ave to
center of the site to WSE.

**Connection to WSE north of
FK Creek - \$24.8M**

Connection from center of site to
Northern Staten Island.

**Connection to Forest Hill Rd. -
\$36.5M**

Direct access to Forest Hill Rd.
and points east of the site.

**Connection to Richmond Hill
Rd. - \$32.3M**

Direct access to Richmond Hill Rd.
and points north and east of the
site.

**Later-phase WSE
improvements - \$10.1M**

Improves vehicular flow on
mainline and service roads.
Provides better access to core of
the site.

**East Park alternative alignment
- \$74M**

Reuse of haul road alignment to
provide access to Richmond Hill
Rd. and Forest Hill Rd.

**Total Cost of System-
Estimated \$160M-165M**

Road development

Connections to WSE
north of Fresh Kills Creek

Initial WSE Connections

Connection to Richmond
Ave via Yukon Ave

**Initial WSE Connections –
\$34.7M**

Access from West Shore
Expressway to center of the site
and first park projects, including
Little South Mound and ball fields.

**Connection to Richmond Ave
via Yukon Ave - \$ 21.5M**

**Connection from Richmond Ave to
center of the site to WSE.**

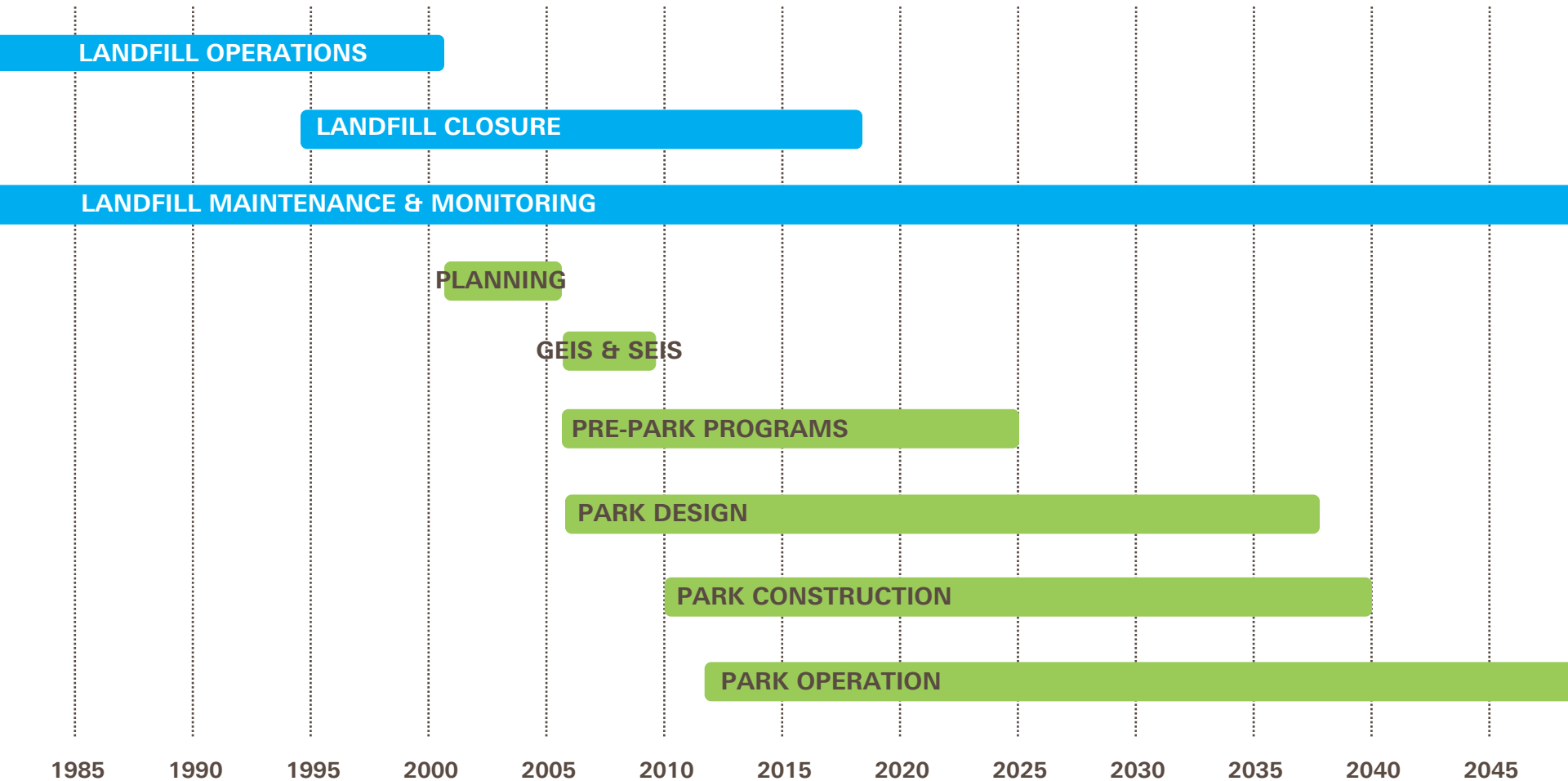
**Connection to WSE north of
FK Creek - \$24.8M**

**Connection from center of site to
northern Staten Island.**



Site stewardship timeline

 SANITATION  PARKS





SOUTH PARK

APRIL 2010

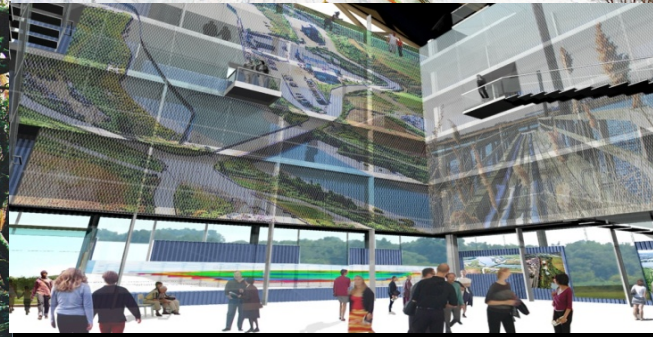


City of New York
Parks & Recreation

fo field operations
Parks Capital Design



1. CREATE SETTINGS FOR A DIVERSE MIX OF USES



2. RESTORE ECOLOGY



3. IMPROVE CONNECTIVITY AND REDUCE TRAFFIC



FRESHKILLS PARK 2006 MASTER PLAN FOR 2,200 ACRES



TRAVIS
COMMUNITY

WILLIAM T. DAVIS
WILDLIFE REFUGE

NEW
SPRINGVILLE
COMMUNITY

STATEN
ISLAND
MALL

LATOURETTE
PARK

ARDEN
HEIGHTS
COMMUNITY

ARDEN
HEIGHTS
WOODS

CONFLUENCE

SOUTH
PARK

EAST
PARK

NORTH
PARK

ISLE OF
MEADOWS

WEST
PARK

ARTHUR
KILL

NEW
JERSEY

0

1 MILE



FRESHKILLS PARK EARLY PROJECTS

SCHMUL PARK

NORTH PARK PHASE 1

WEST SHORE EXPRESSWAY
SERVICE ROADS AND RAMPS

EXCAVATOR SIGN

WSE PARKING LOT

OWL HOLLOW SOCCER FIELDS

SOUTH
PARK
PHASE 1

ARTHUR KILL
PARKING LOT

YUKON ROAD

BIKE PATH

FUTURE
BIKE PATH

OWL HOLLOW SOCCER FIELDS



SCHMUL PARK PLAYGROUND



SCHMUL PARK COURTS



NORTH PARK PATHS + SEED FARM



NORTH PARK BIRDING AND PICNICS



NORTH PARK WETLAND RESTORATION



FUTURE ACTIVE RECREATION AND SPORTS





FRESHKILLS PARK EARLY PROJECTS

SCHMUL PARK

NORTH PARK PHASE 1

WEST SHORE EXPRESSWAY
SERVICE ROADS AND RAMPS

EXCAVATOR SIGN

WSE PARKING LOT

OWL HOLLOW SOCCER FIELDS

YUKON ROAD

SOUTH
PARK
PHASE 1

ARTHUR KILL
PARKING LOT

BIKE PATH

FUTURE
BIKE PATH

LONG-TERM PLAN FOR SOUTH PARK - 425 ACRES

1. 38-ACRE STRIP OF SPORTS FACILITIES NEXT TO MAJOR ACCESS POINT ON WSE: SOCCER, 20 TENNIS COURTS, INDOOR SWIM CENTER, TRACK & FIELD FACILITY, RIDING RING AND STABLES; SOFTBALL / LITTLE LEAGUE FIELDS ADDED
2. 25+ MILES OF HIKING AND BIKE PATHS; HORSEBACK RIDING, MOUNTAIN BIKE, CROSS COUNTRY RUNNING AND SKIING TRAILS
3. 3 PARKING AREAS / 294 PARKING SPACES ▲
4. PICNIC, BBQ AND PLAY AREAS; CONCERT AND EVENT SPACE ADDED



PHASE 1 OF SOUTH PARK - 20 ACRES

20 ACRES OF RECREATION AND SPORTS FACILITIES IN THE BEST LANDSCAPE SETTINGS THE SITE HAS TO OFFER, SERVED BY MAJOR ACCESS IMPROVEMENTS OFF OF THE WEST SHORE EXPRESSWAY AND BY ARTHUR KILL ROAD



LARGE FLAT AREA ACCESSIBLE FROM THE WEST SHORE EXPRESSWAY



+ 20'

+ 94'

SURROUNDED BY WOODLAND

An aerial photograph showing a landscape with a multi-lane highway on the left, a winding river in the middle ground, and a large, dense forested area in the foreground. The text 'SURROUNDED BY WOODLAND' is overlaid at the top. Two elevation markers, '+ 94\'' and '+ 20'', are placed on the image.

+ 94'

+ 20'

FRESH AND TIDAL WATER BODIES



West Shore Expressway

+ 94'

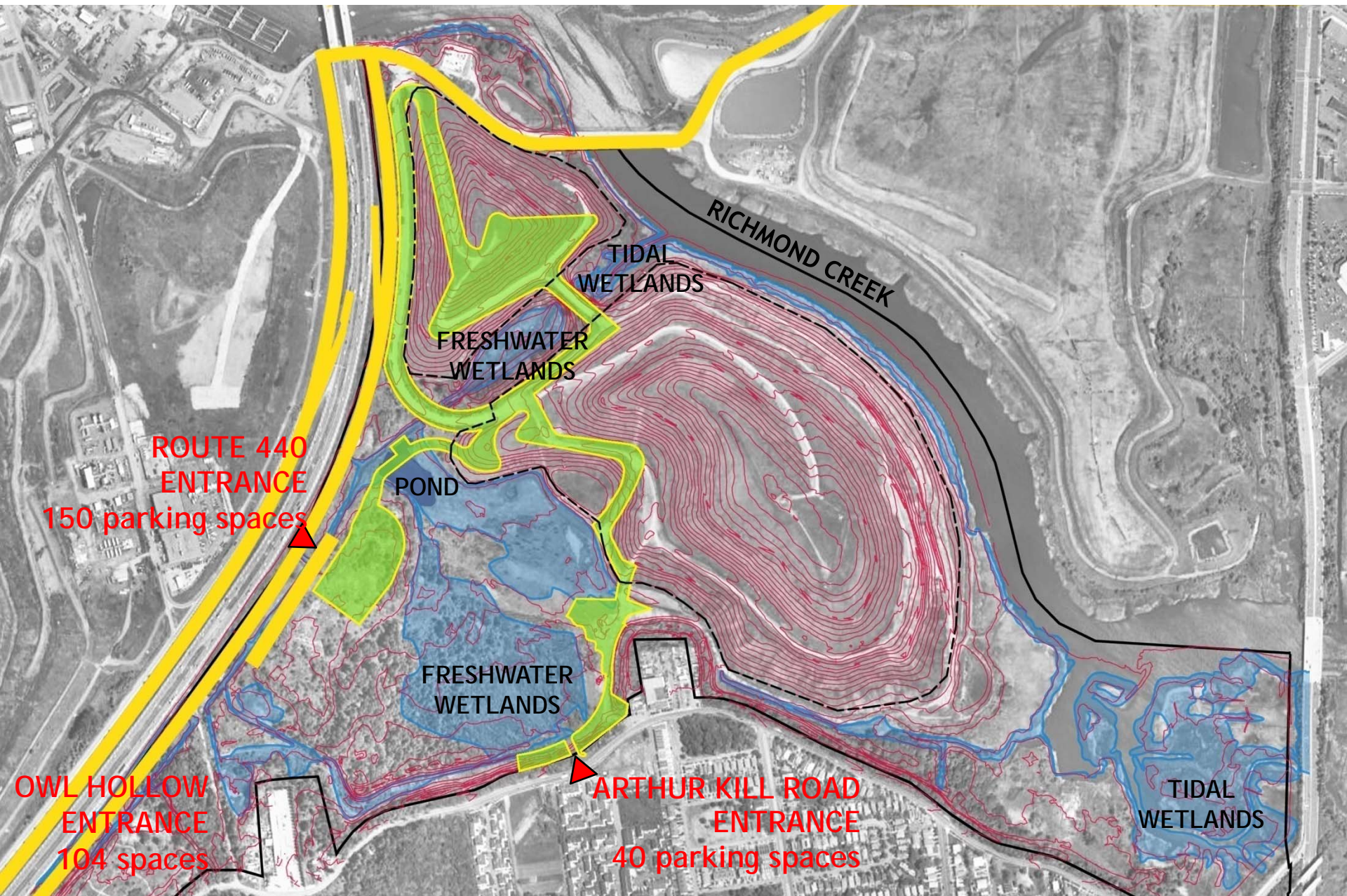
HILL AND VALLEY TOPOGRAPHY





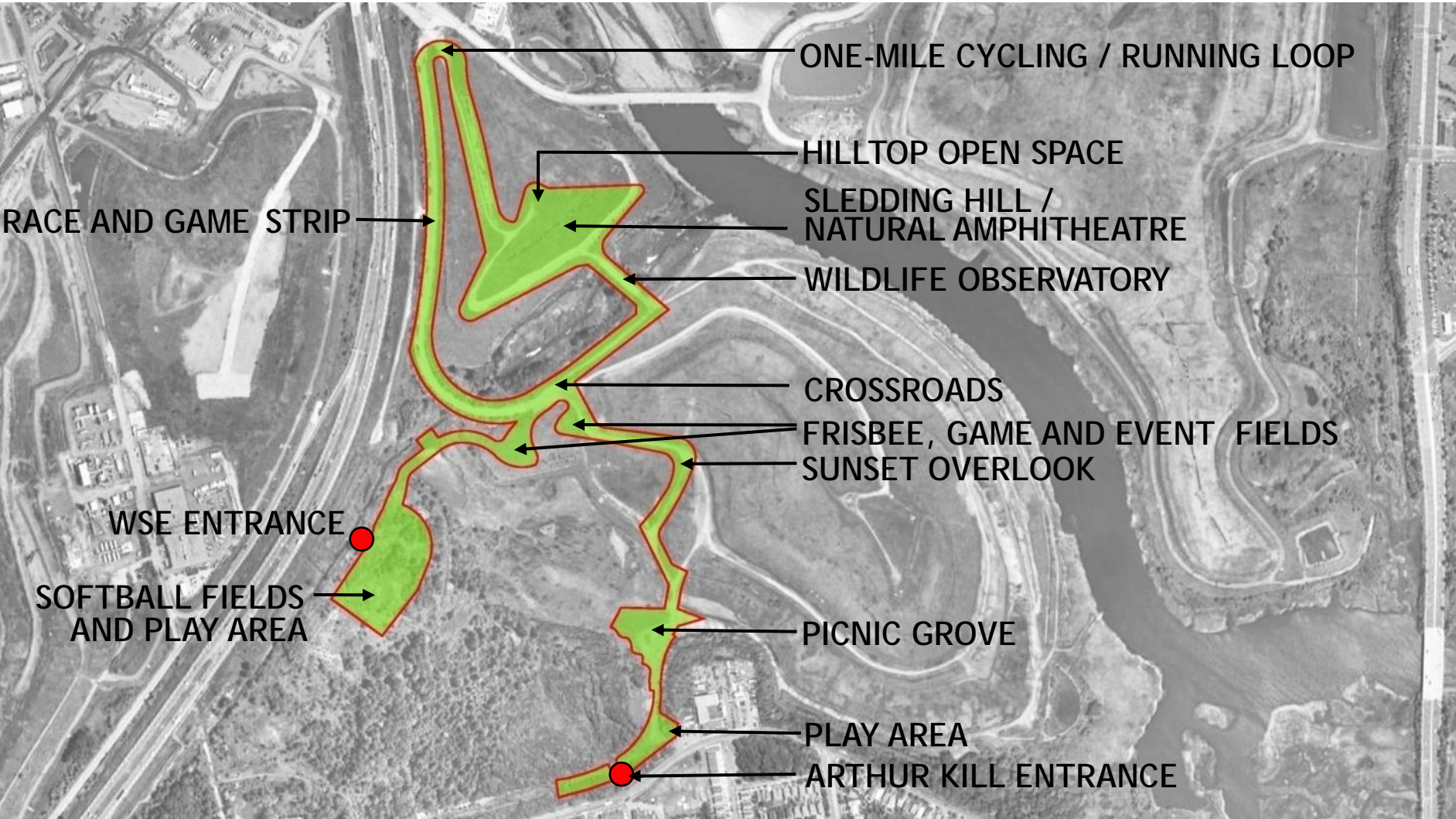


OPPORTUNITIES & CONSTRAINTS



DESTINATIONS

2.4-MILE MULTI-USE PATH



SOUTH PARK LOOKING SOUTHEAST



RARITAN BAY

KENILWORTH
AVENUE

ASPEN
KNOLLS
WAY

ILYSSA
WAY

ARDEN
HEIGHTS

ARTHUR KILL ROAD
ENTRANCE

FORESTED
WETLANDS

ARDEN
AVENUE

WEST SHORE
EXPRESSWAY

POND

BIG SOUTH
MOUND

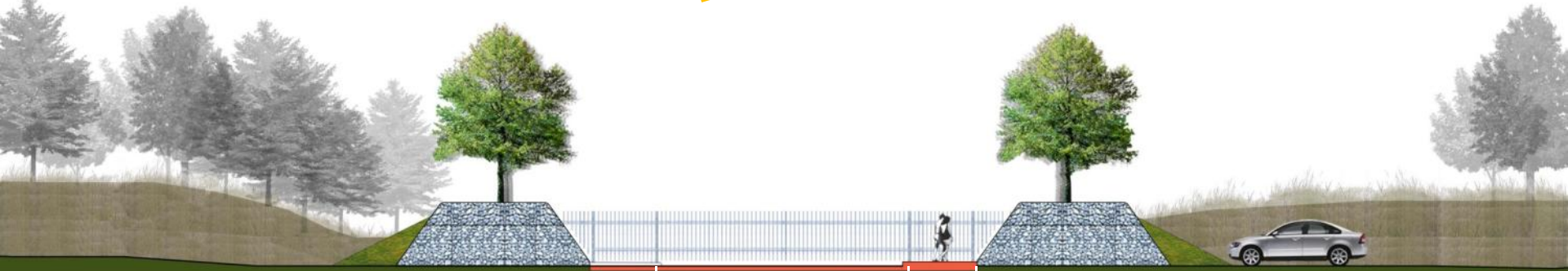
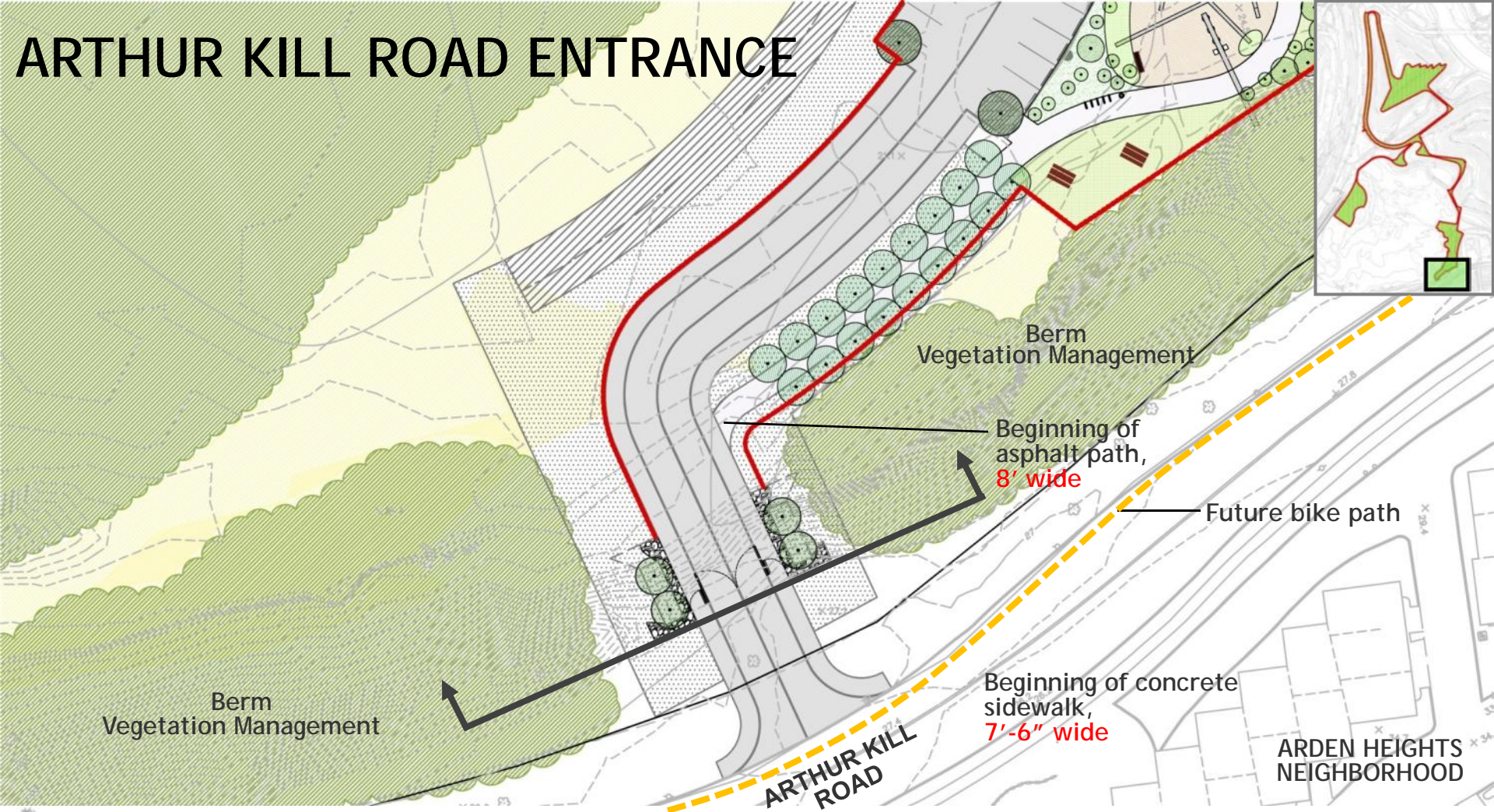
FRESHWATER
WETLAND

TIDAL
WETLAND

LITTLE
SOUTH MOUND

RICHMOND
CREEK

ARTHUR KILL ROAD ENTRANCE



VEHICLE ENTRY CONC. SIDEWALK

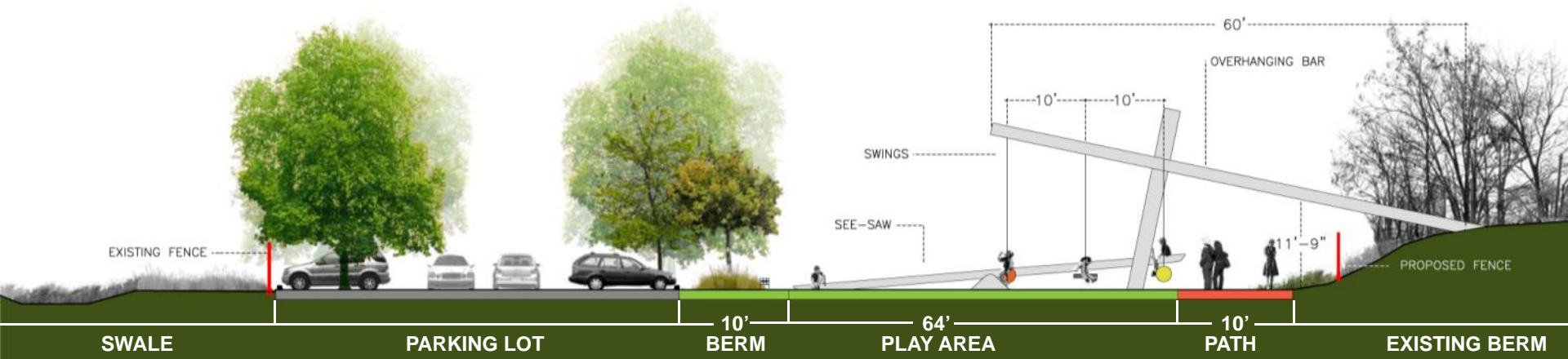
ARTHUR KILL PARKING LOT (40 SPACES)



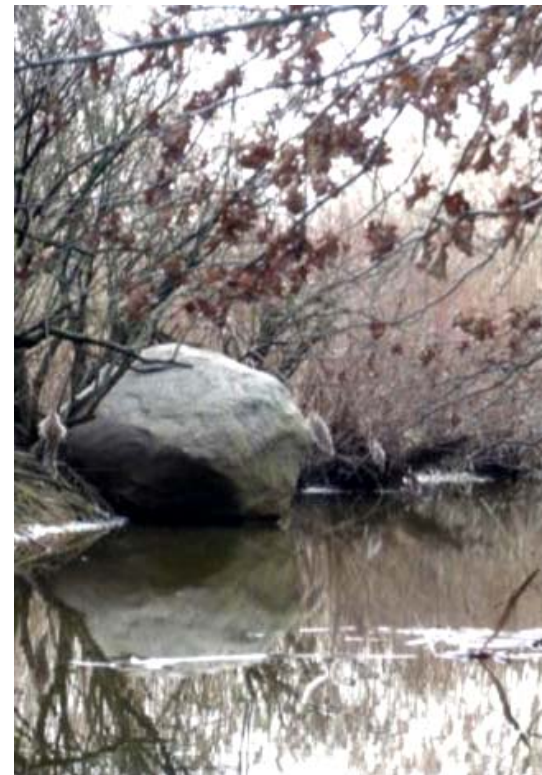
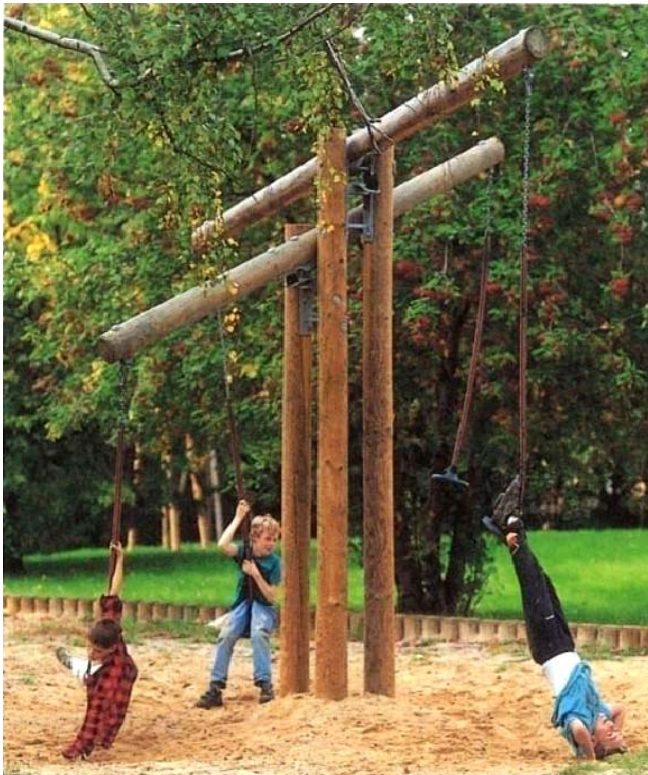
SOUTH PARK PHASE 1



PLAY AREA



PLAY AREA FEATURES



NATIVE SHRUB PALETTE



SERVICEBERRY



RED CHOKEBERRY



SWEET PEPPERBUSH



SILKY DOGWOOD



WITCH HAZEL



COMMON WINTERBERRY



NANNYBERRY VIBURNUM



AMERICAN ELDER

SOUTH PARK PHASE 1



ARTHUR KILL ROAD ENTRANCE

MILLION TREES PICNIC GROVE

[illegible]

MORaine OAK WOODLAND PALETTE



SHAGBARK HICKORY



AMERICAN SWEETGUM



SASSAFRAS



IRONWOOD



SWAMP WHITE OAK



CHRISTMAS FERN



CINNAMON FERN



WOOD ANEMONE



WHITE WOOD ASTER

PICNIC GROVE LOOKING TOWARD THE MOUNDS



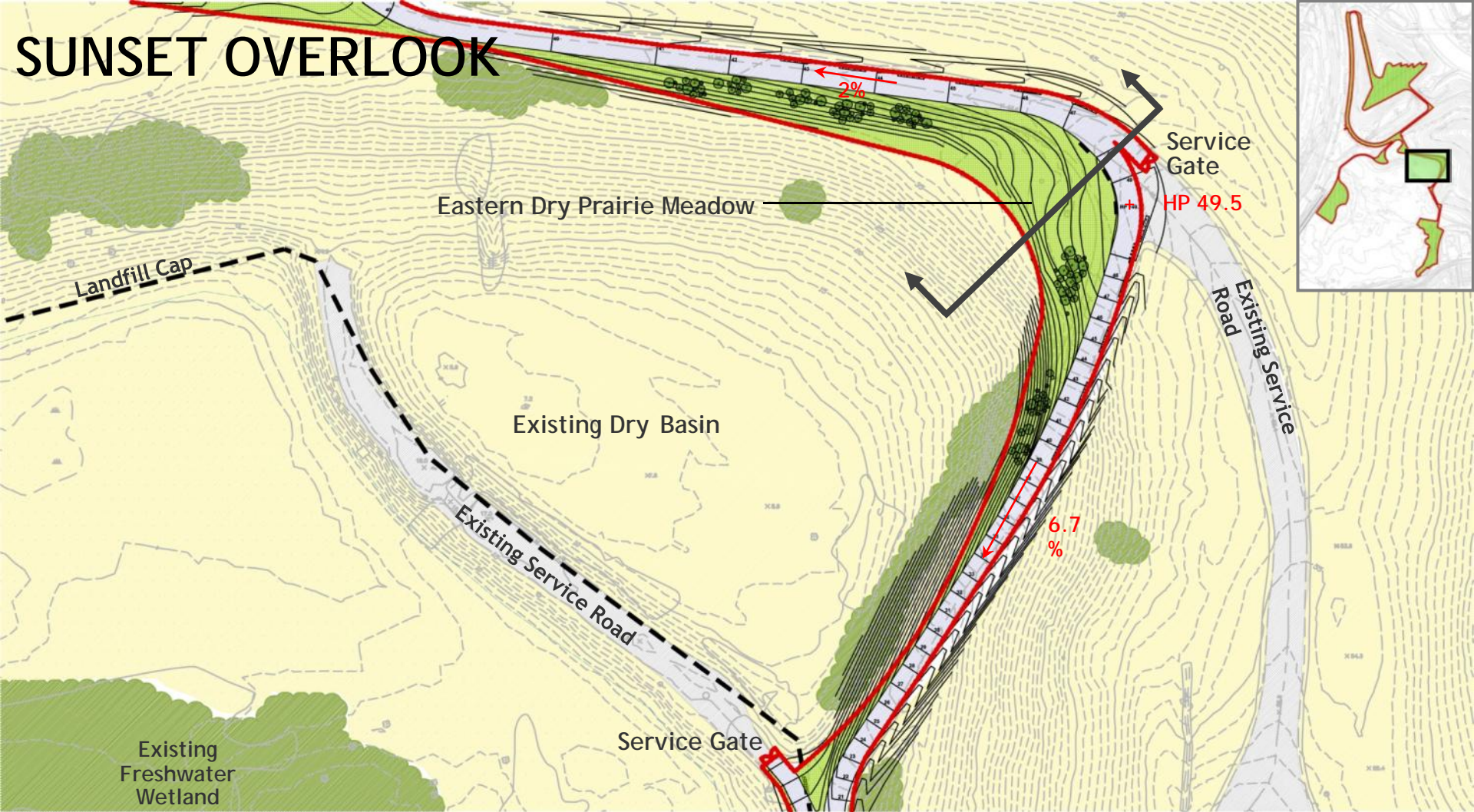
SOUTH PARK PHASE 1



ARTHUR KILL ROAD ENTRANCE
MILLION TREE PICNIC GROVE

SUNSET OVERLOOK

SUNSET OVERLOOK



WINTER VIEW FROM OVERLOOK



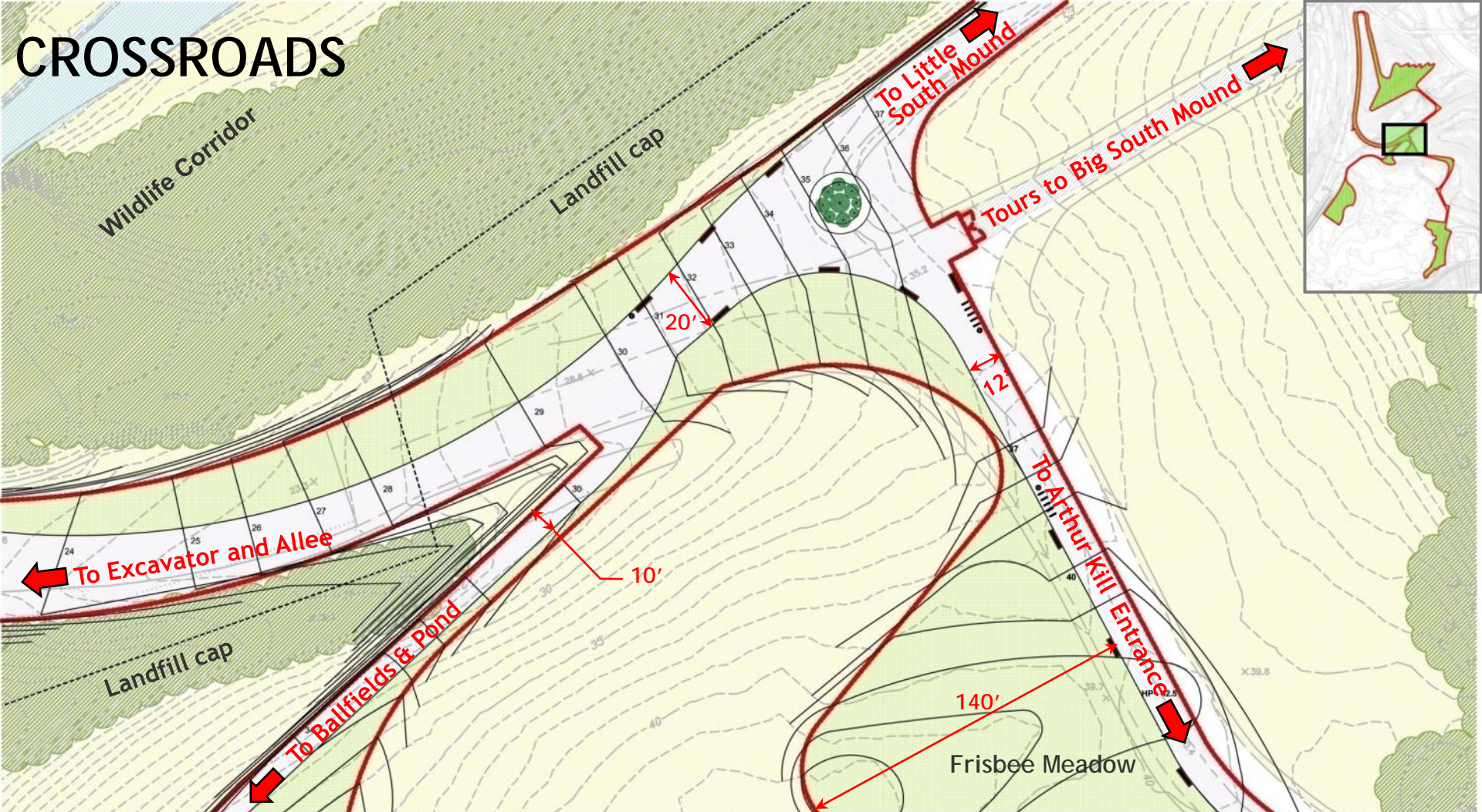
SOUTH PARK PHASE 1



ARTHUR KILL ROAD ENTRANCE
MILLION TREE PICNIC GROVE

SUNSET OVERLOOK

CROSSROADS



LOOKING SOUTHEAST



ARTHUR KILL ROAD ENTRANCE
MILLION TREE PICNIC GROVE

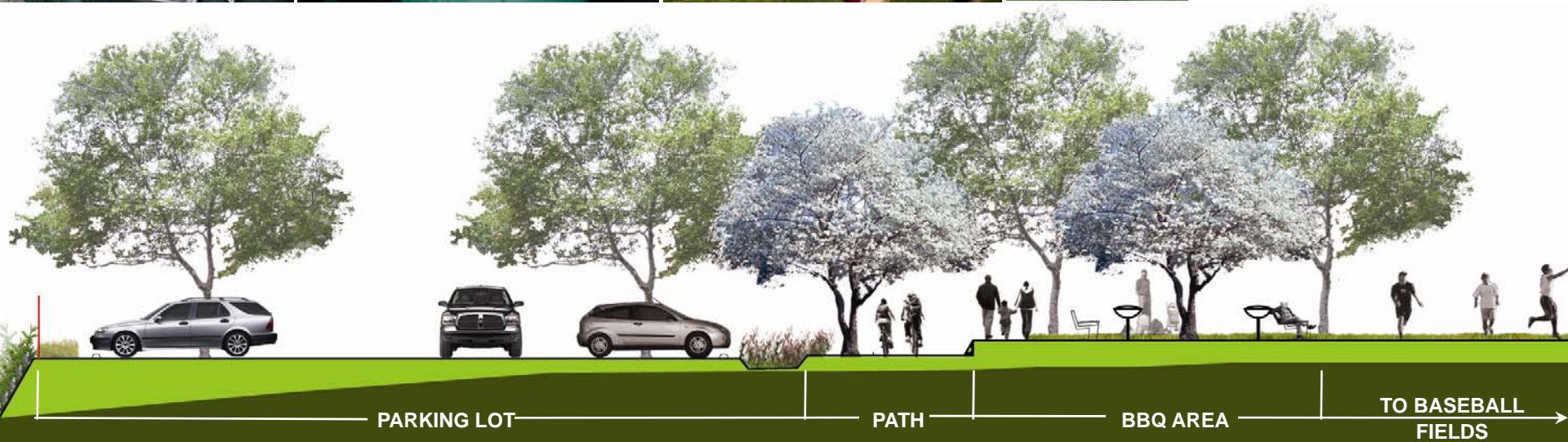
SUNSET OVERLOOK

CROSSROADS

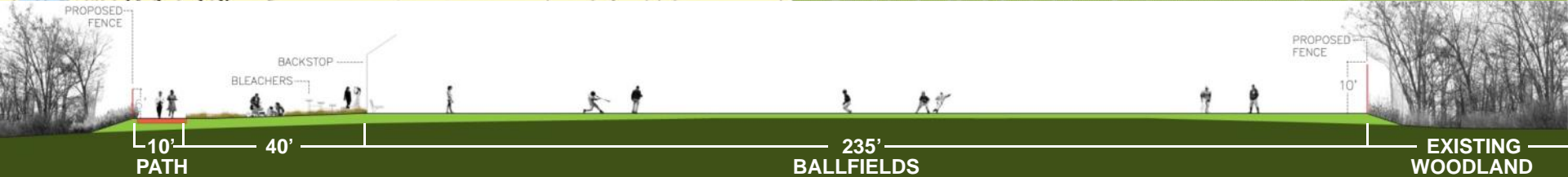
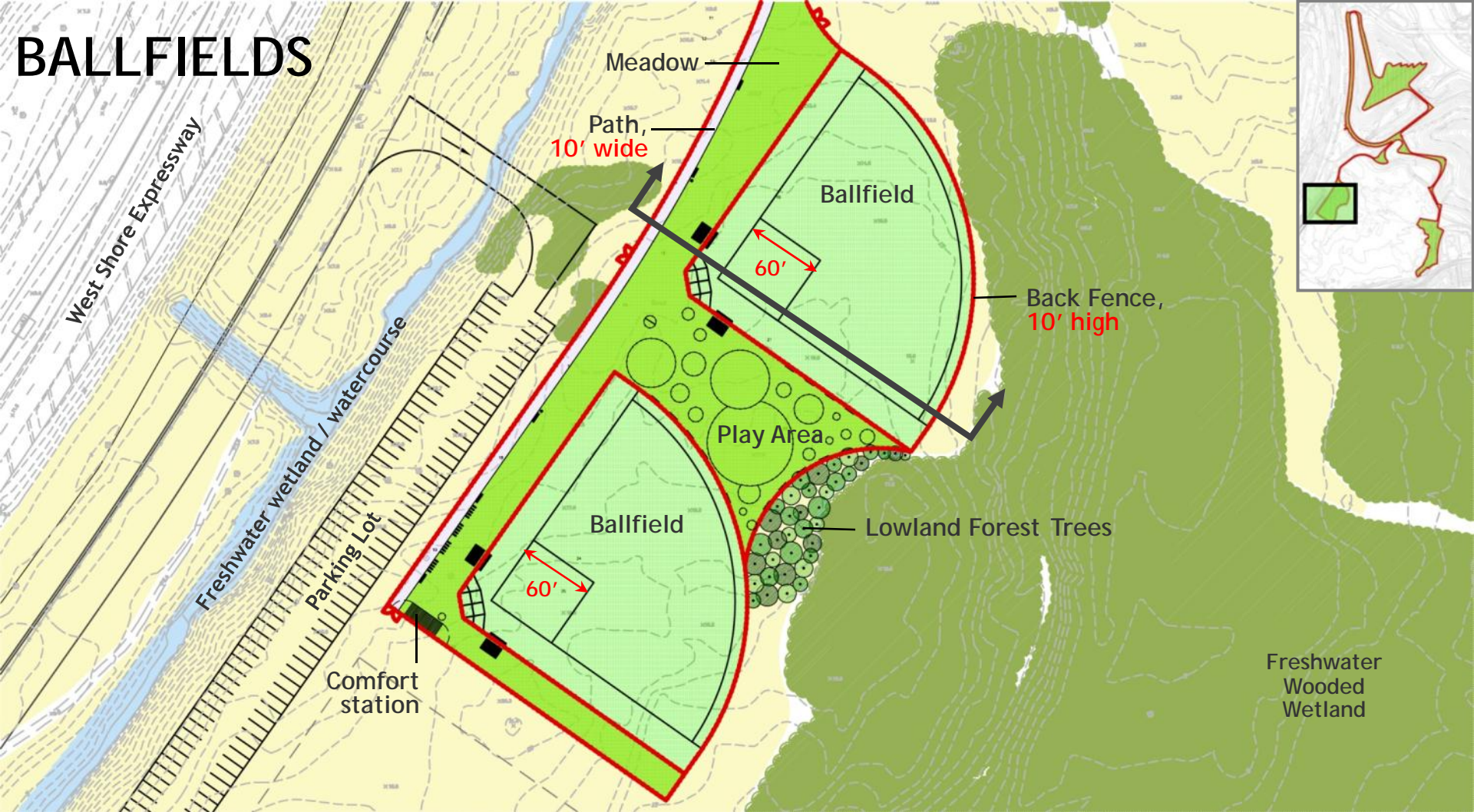
BALLFIELDS

WSE ENTRANCE

PARKING LOT (150 SPACES) AND BBQ AREA



BALLFIELDS



An aerial photograph of a park area with various landmarks and trails highlighted. The text "LOOKING SOUTHEAST" is in the top left. The "ARTHUR KILL ROAD ENTRANCE" is marked with a red dot. The "MILLION TREE PICNIC GROVE" is a large green area. The "SUNSET OVERLOOK" is a curved path. The "CROSSROADS" is a central intersection. The "POND" is a body of water. The "BALLFIELDS" are green fields. The "WSE ENTRANCE" is marked with a red dot. A multi-lane road is on the right.

MILLION TREE PICNIC GROVE

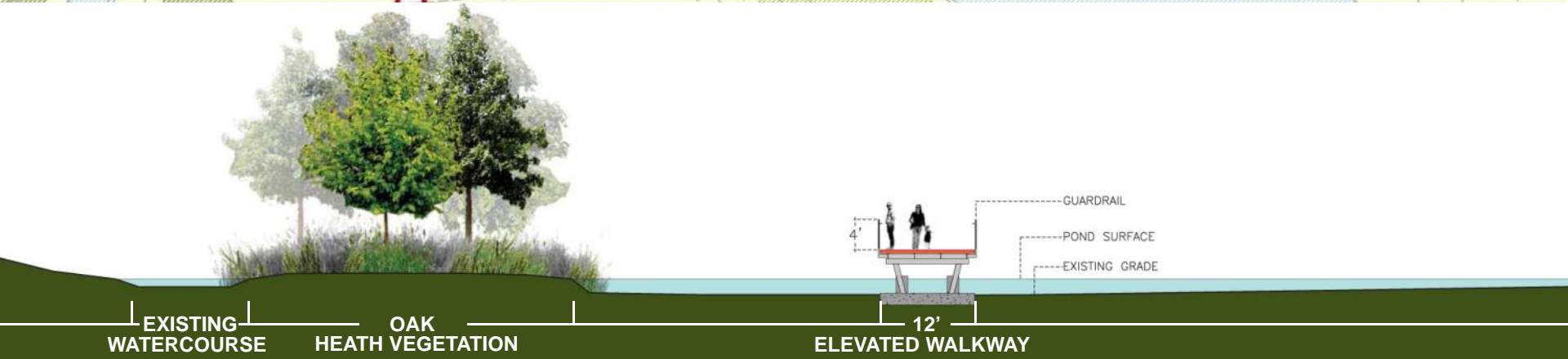
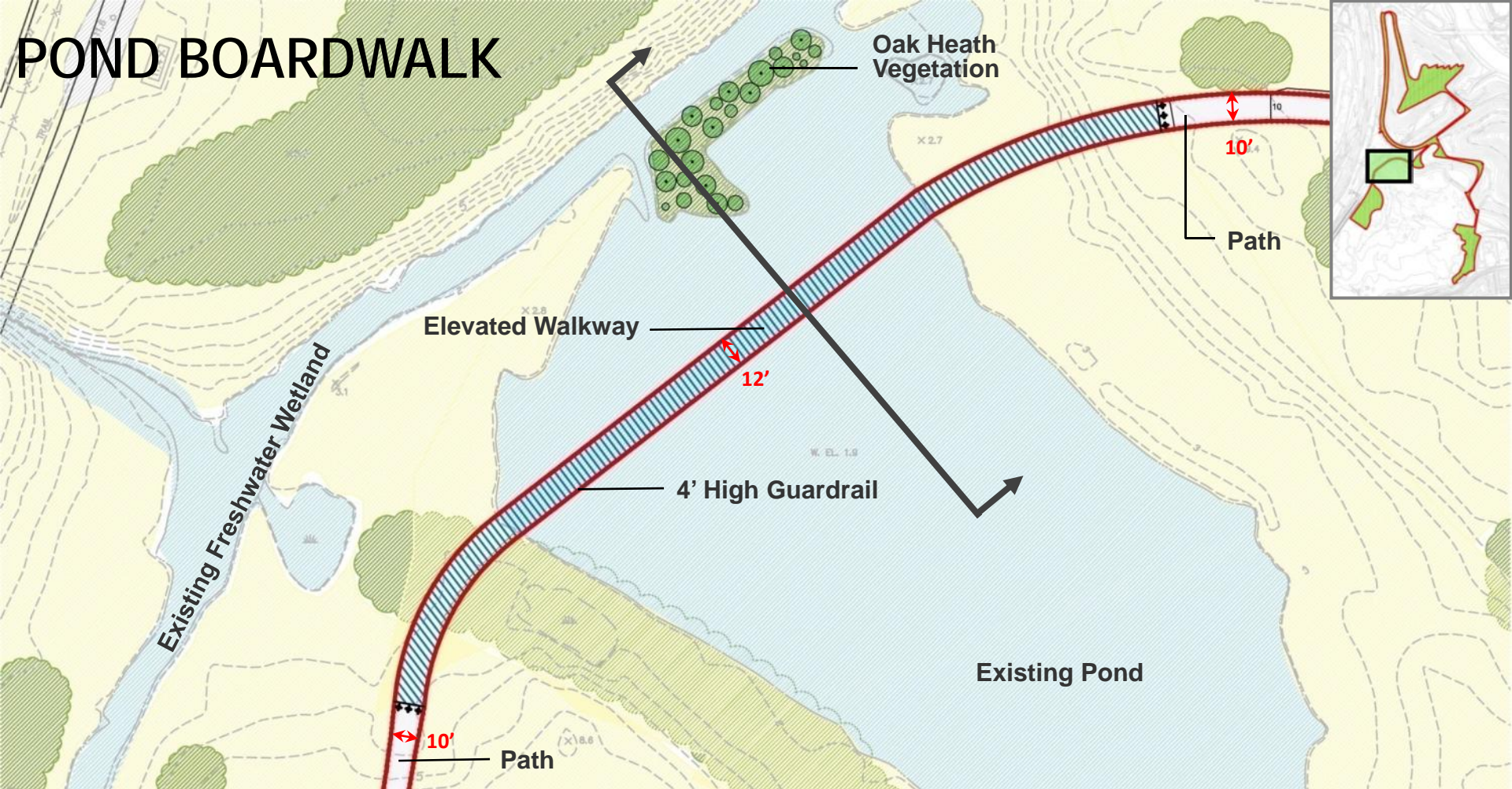
BALLFIELDS

POND

CROSSROADS

POND LOOKING SOUTH





An aerial photograph of a park area with various trails and landmarks. A red dashed line outlines a trail route that starts at a red dot labeled 'ARTHUR KILL ROAD ENTRANCE', goes to a red dot labeled 'WSE ENTRANCE', and then loops back. A yellow dashed line outlines a trail route starting from the Arthur Kill Road Entrance, going to a red dot labeled 'SUNSET OVERLOOK', and then looping back. A solid red line outlines a trail route starting from the Arthur Kill Road Entrance, going to a red dot labeled 'POND', and then looping back. A solid yellow line outlines a trail route starting from the Arthur Kill Road Entrance, going to a red dot labeled 'CROSSROADS', and then looping back. The area includes a residential neighborhood in the upper left, a large body of water (Mill Pond) in the center, and a highway (I-287) on the right. The text 'LOOKING SOUTHEAST' is in the top left corner.

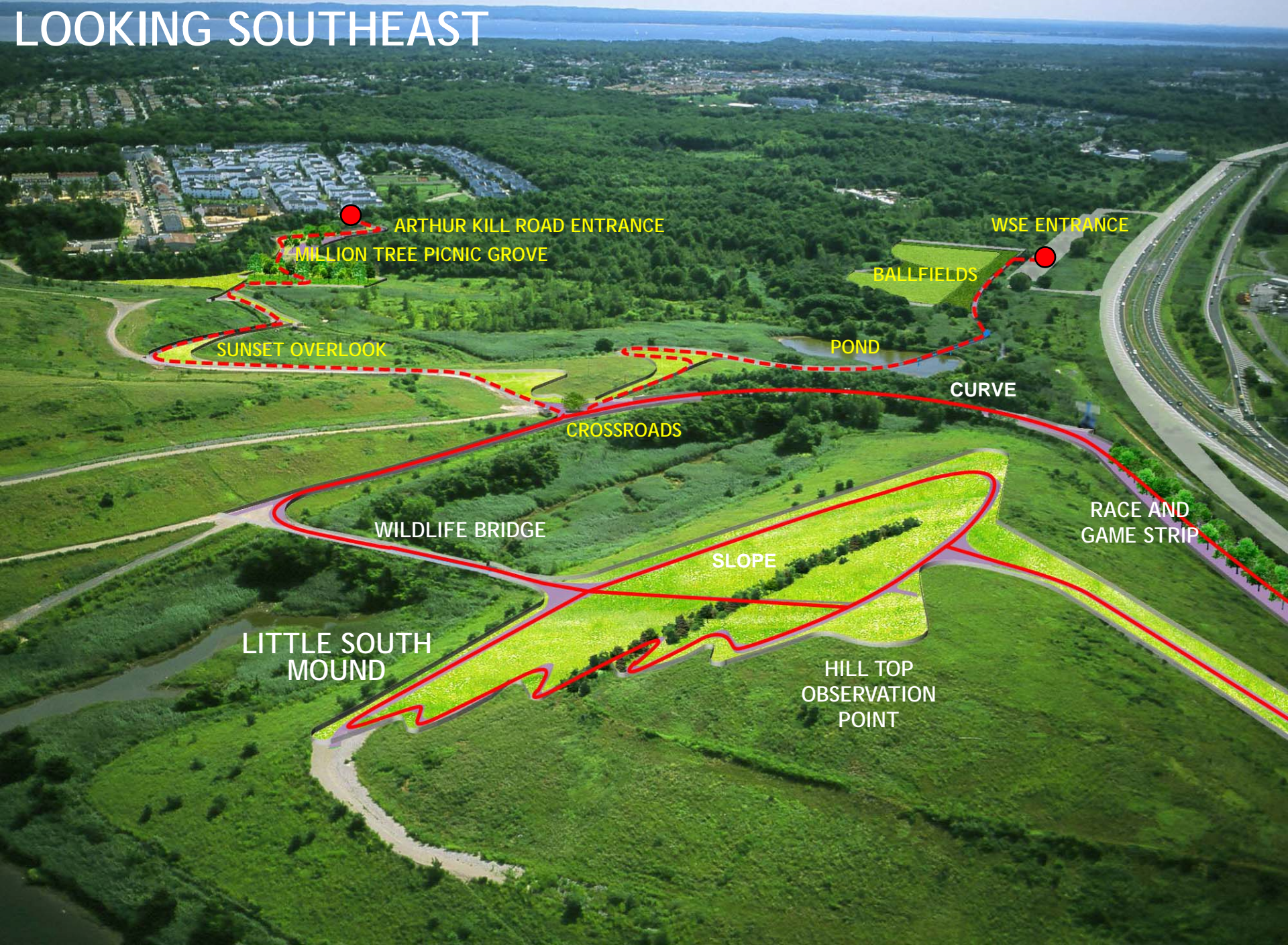
MILLION TREE PICNIC GROVE

BALLFIELDS

POND

CROSSROADS

LOOKING SOUTHEAST



ARTHUR KILL ROAD ENTRANCE
MILLION TREE PICNIC GROVE

WSE ENTRANCE

BALLFIELDS

SUNSET OVERLOOK

POND

CROSSROADS

CURVE

WILDLIFE BRIDGE

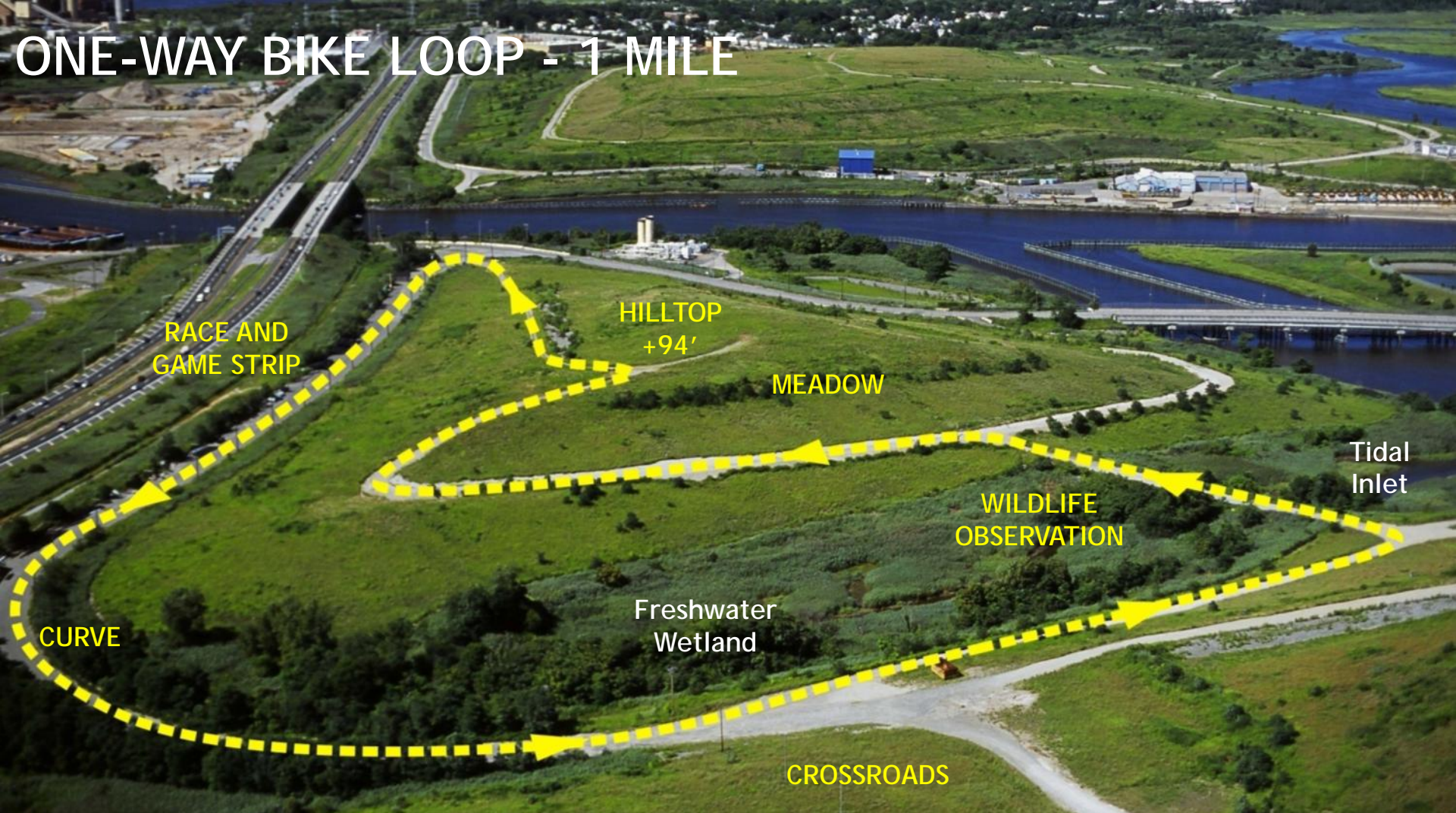
SLOPE

RACE AND
GAME STRIP

LITTLE SOUTH
MOUND

HILL TOP
OBSERVATION
POINT

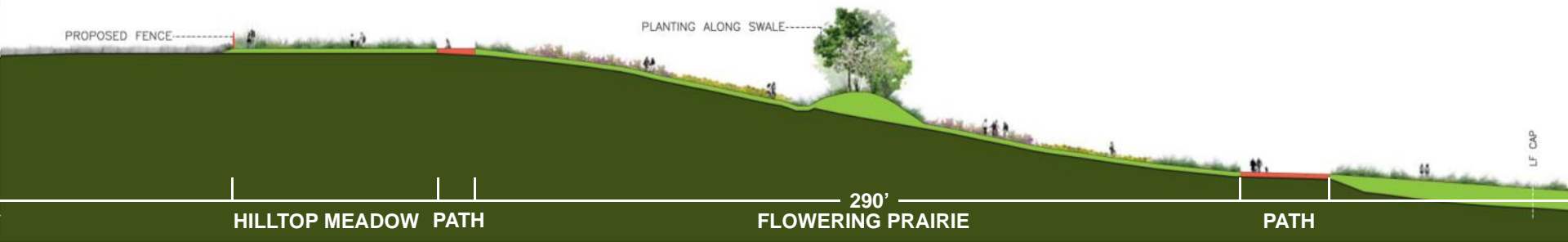
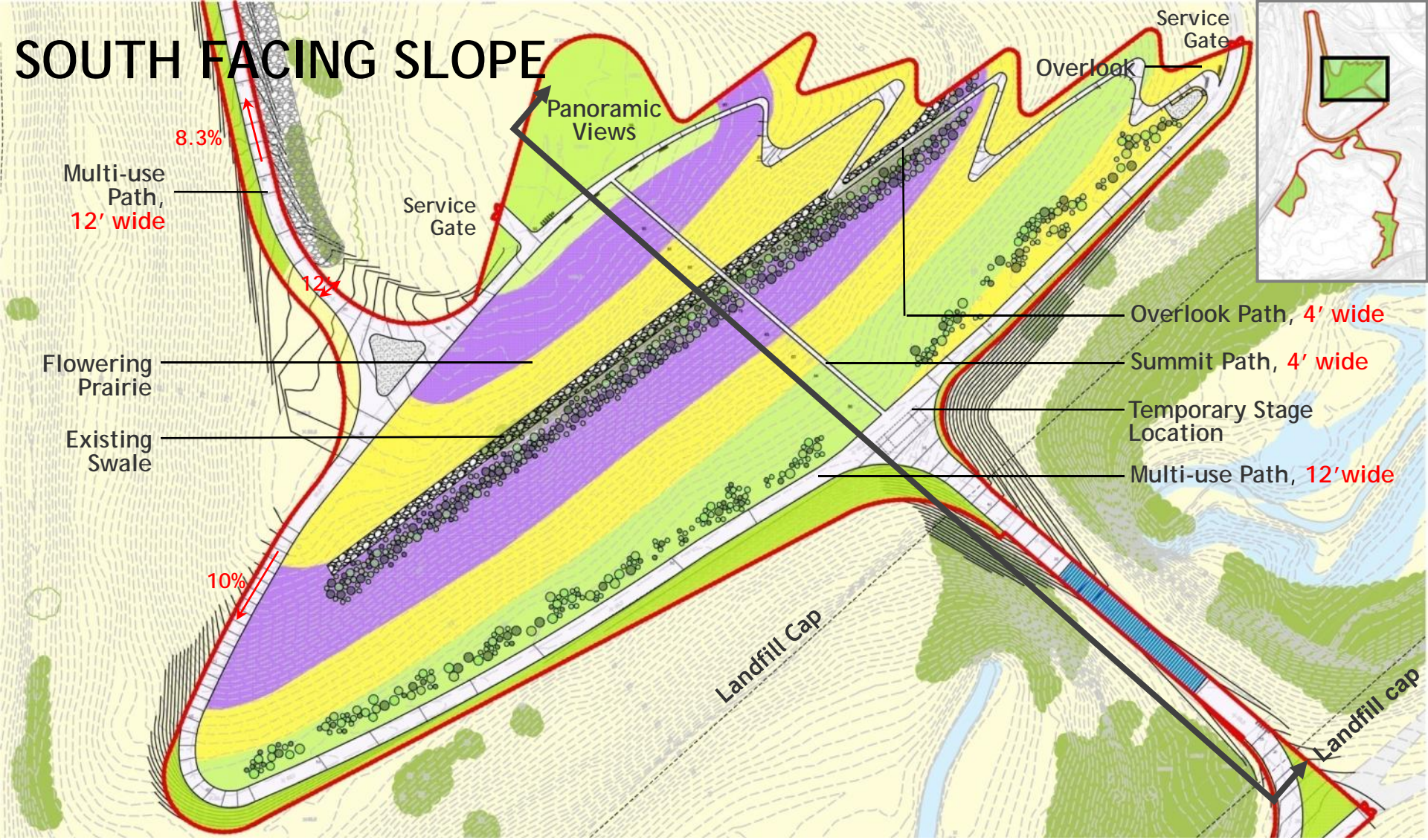




WILDLIFE CORRIDOR EXISTING CONDITIONS



SOUTH FACING SLOPE



FLOWERING MEADOW PALETTE



PURPLE CONEFLOWER



PURPLE JOE-PYE WEED



NEW YORK IRONWEED



OHIO SPIDERWORT



GRASS-LEAVED GOLDENROD



BLACK-EYED SUSAN



GRAY GOLDENROD



CLASPING CONEFLOWER



BLACK LOCUST



AMERICAN CHESTNUT

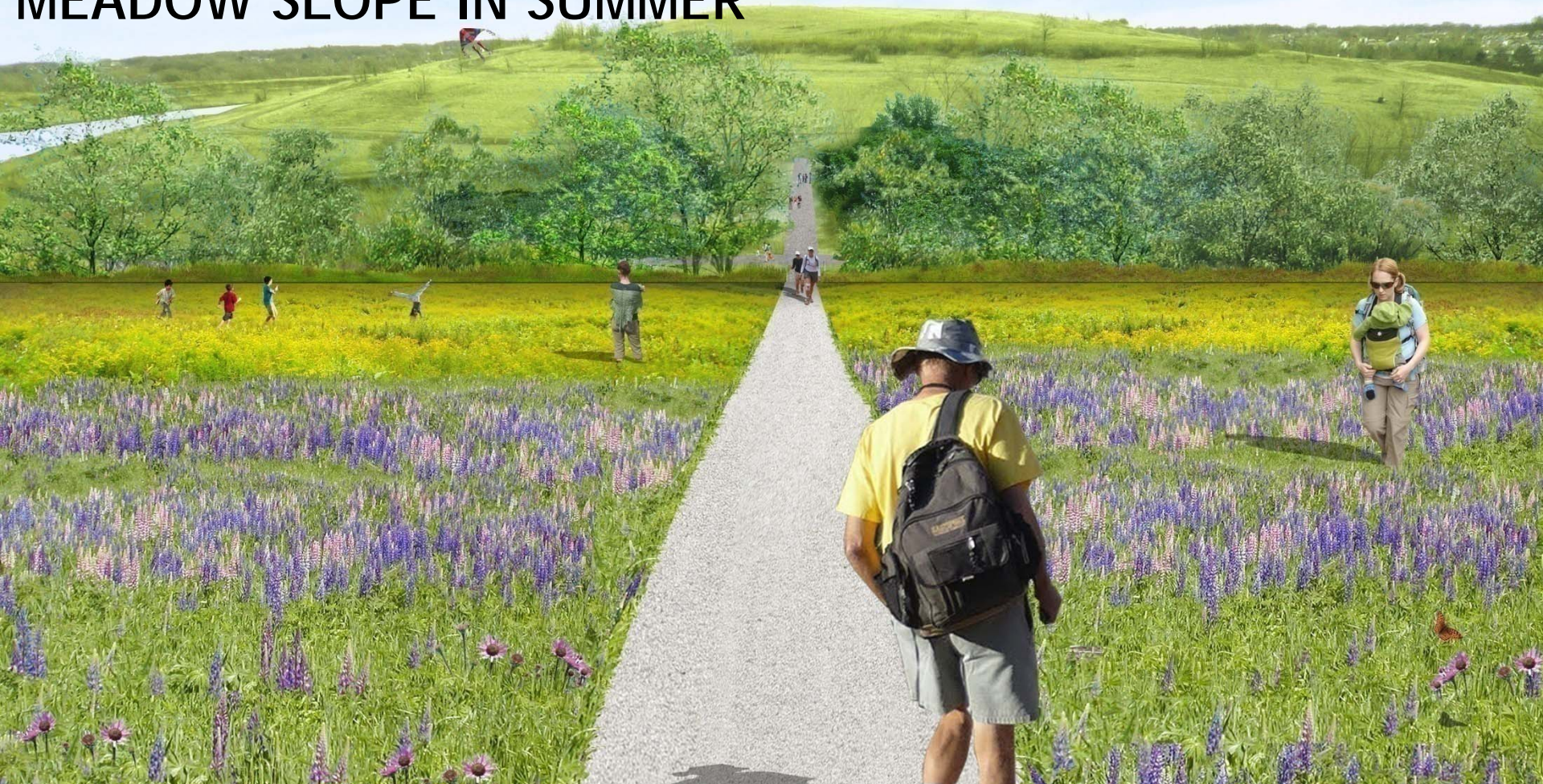


BLACK CHERRY



NORTH PARK SEED

MEADOW SLOPE IN SUMMER

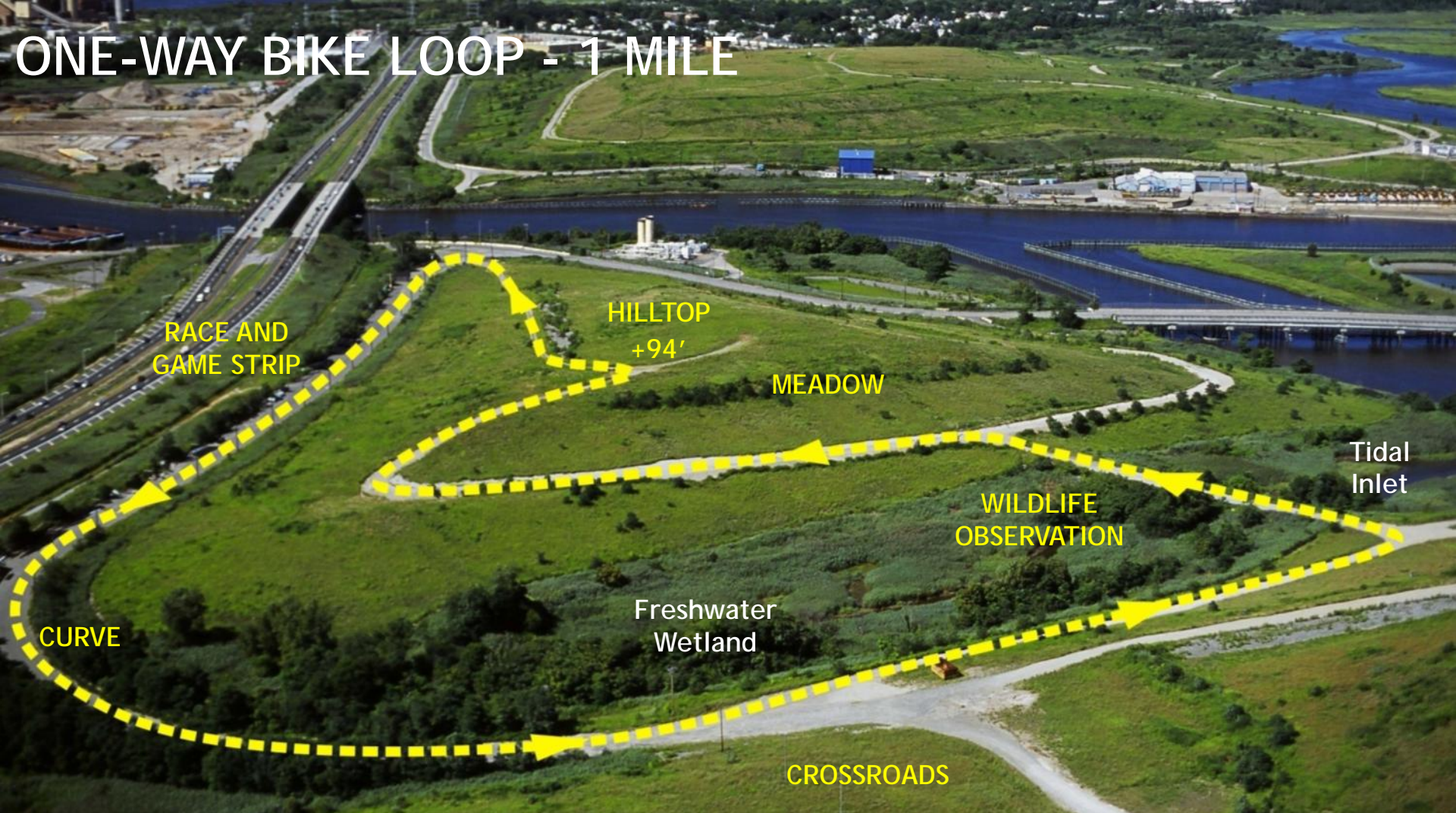


MOWN SLOPE BECOMES A NATURAL AMPHITHEATER



SLOPE WINTER PROGRAMS





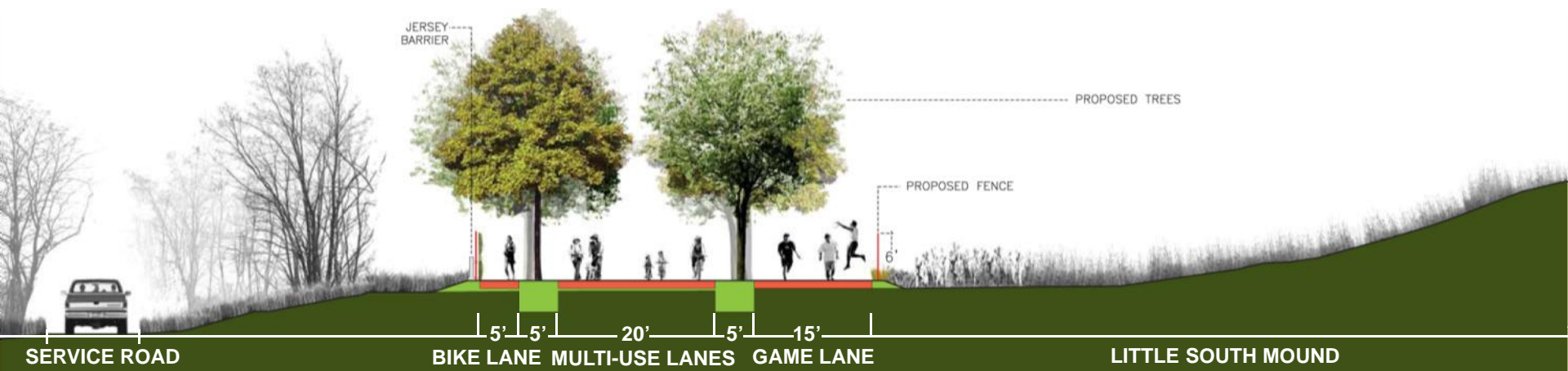
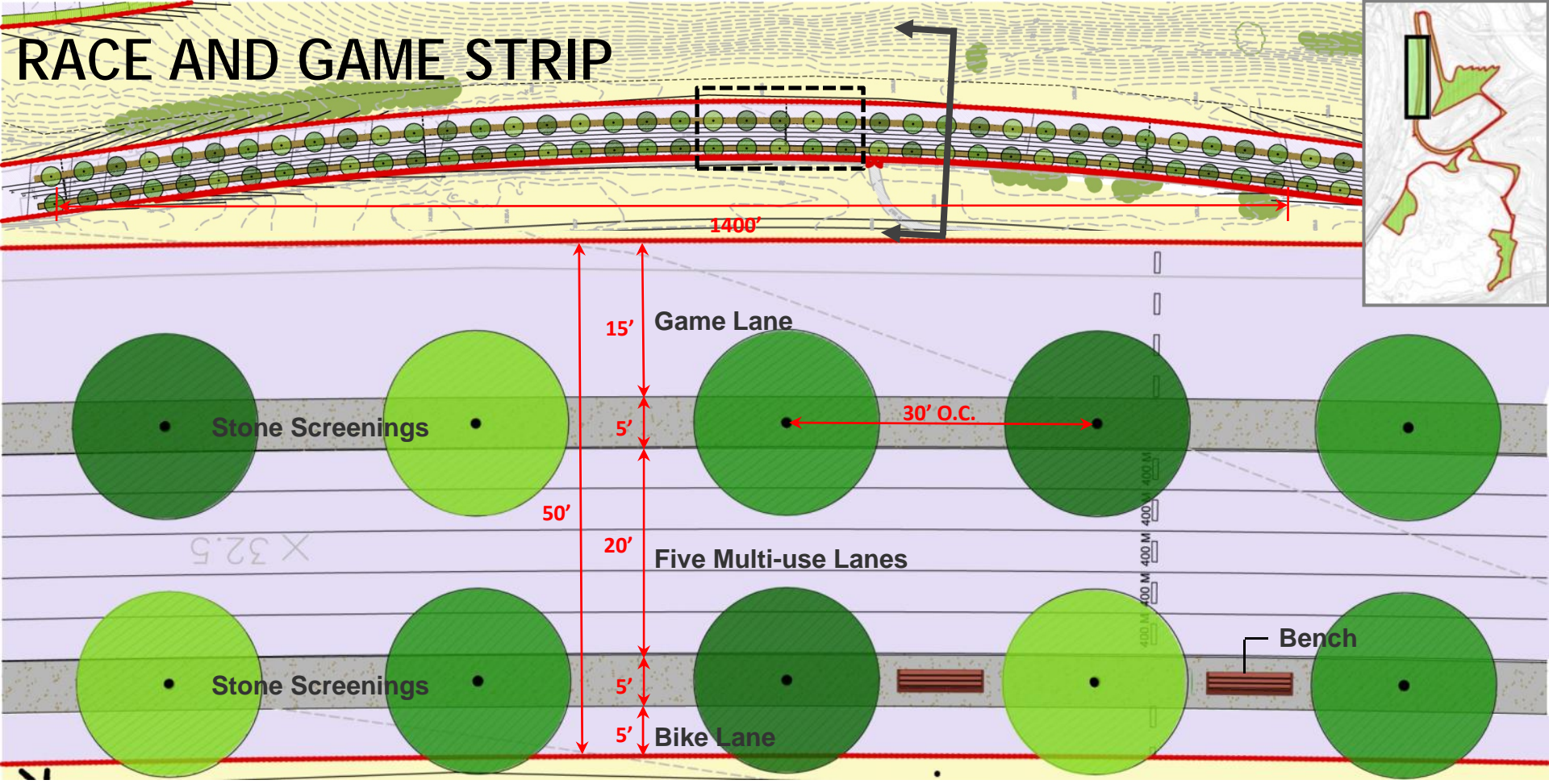
LOOP PATH IN SUMMER



LOOP PATH IN WINTER



RACE AND GAME STRIP





EXISTING CONDITION OF THE STRIP LOOKING NORTH

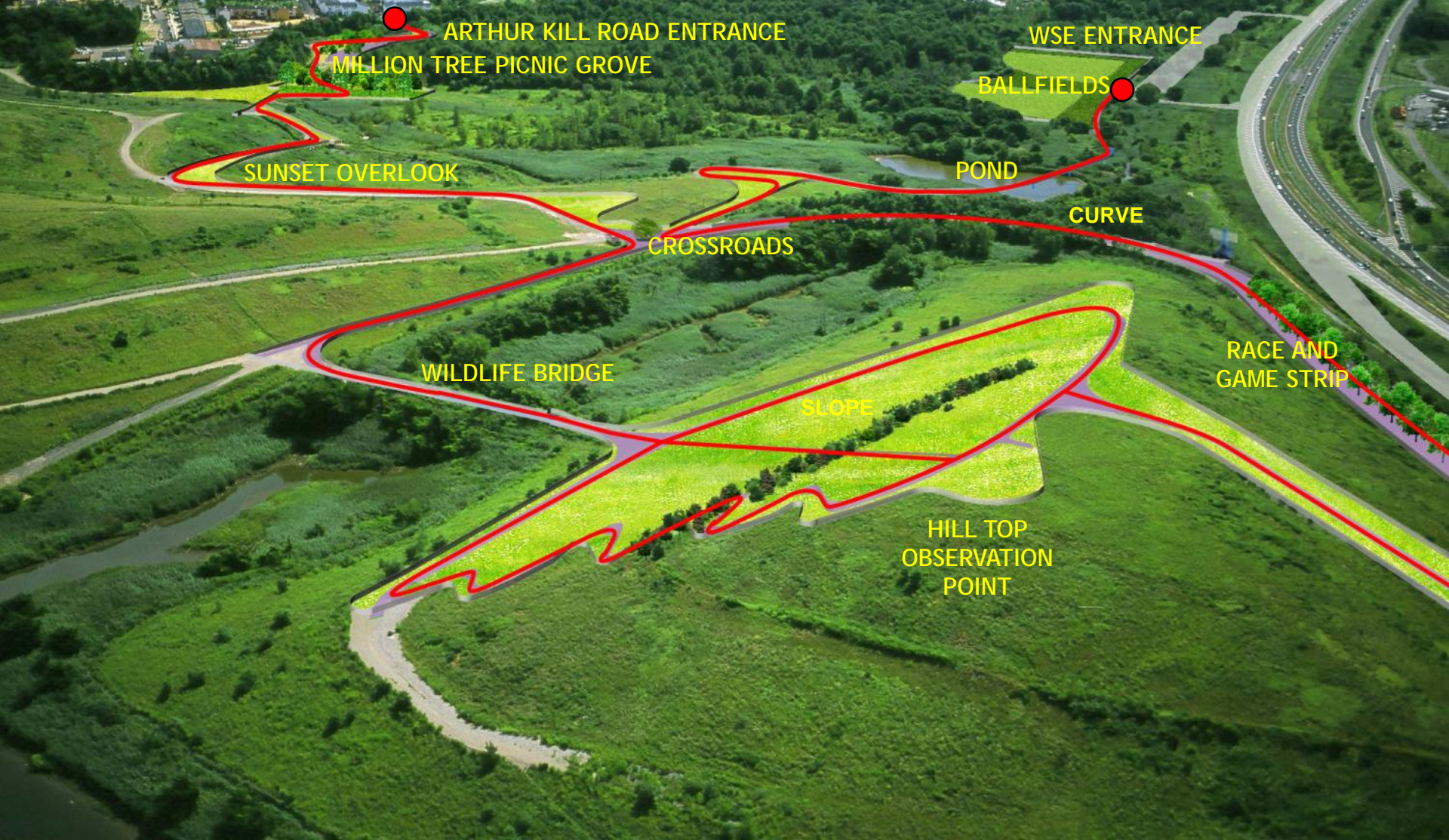
STRIP TRANSFORMED

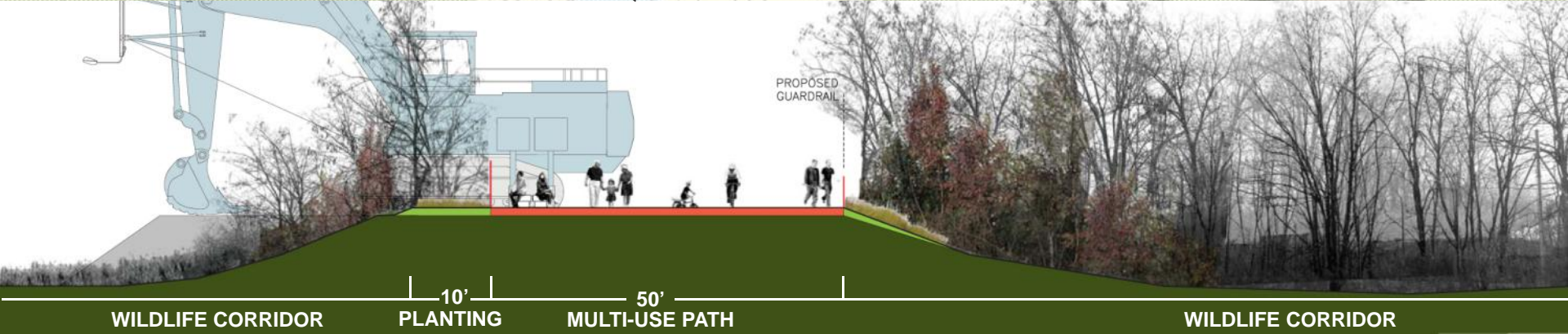
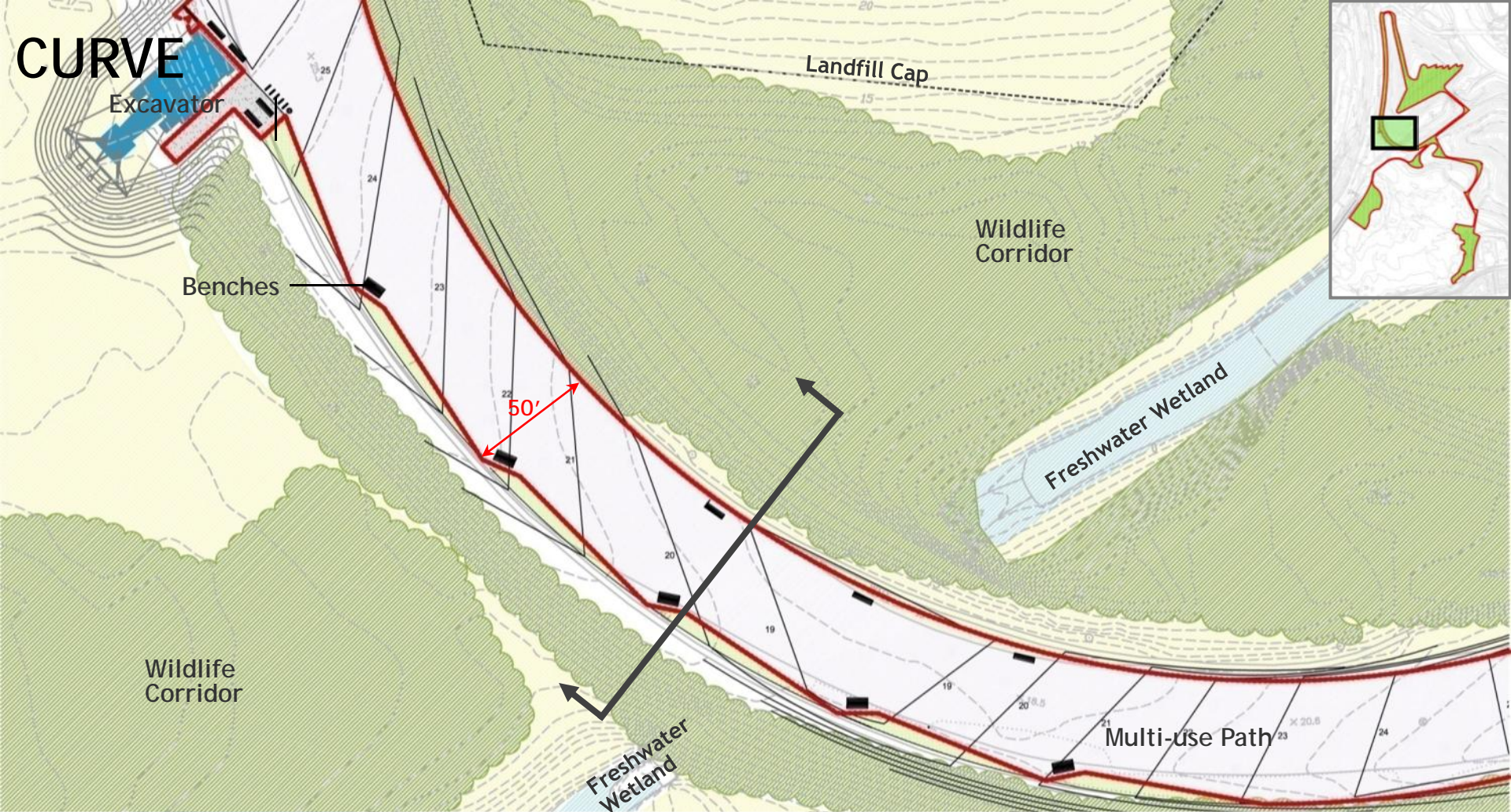


RACE AND GAME STRIP PROGRAM



SOUTH PARK PHASE 1







WILDLIFE CORRIDOR VISIBLE FROM CURVE



SAFETY + ACCESS



MIN. 2 FEET
ADDITIONAL
SOIL COVER

6' FENCE AROUND
PUBLIC AREAS

FURNISHINGS - FRESHKILLS PARK PALETTE



BENCH TYPE A -
WITH BACK



BENCH TYPE B -
WITHOUT BACK



PICNIC TABLE



LANDSCAPE FORM
TRASH RECEPTACLE



LANDSCAPE FORM
BOLA BIKE RACK



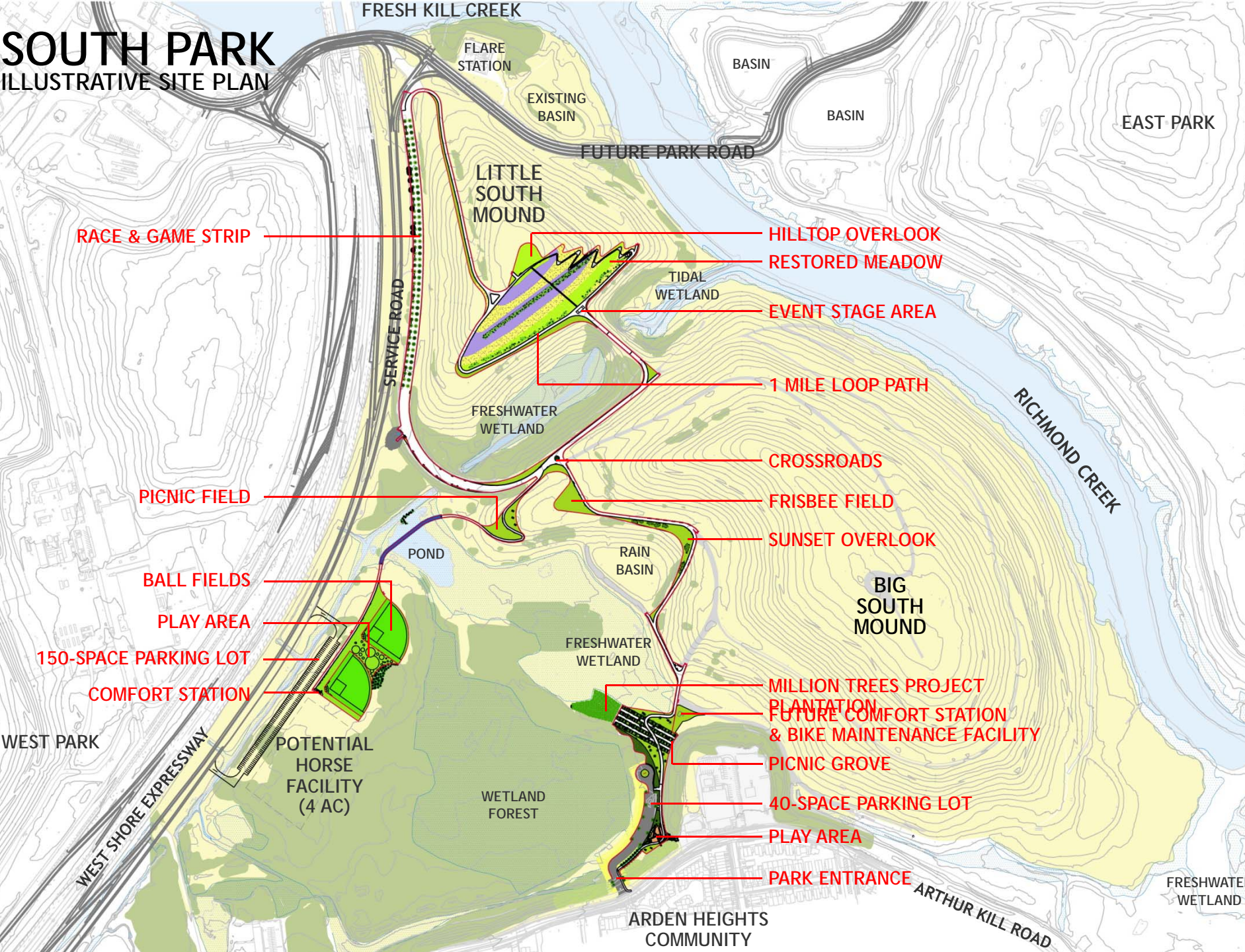
HAWS
DRINKING FOUNTAIN





SOUTH PARK

ILLUSTRATIVE SITE PLAN



SOUTH PARK PHASE 1

