

An aerial photograph of a large wetland area, likely a park, featuring a winding waterway through lush green marshes. The foreground is dominated by a dense, dark green forest. In the background, a residential neighborhood with houses and streets is visible, along with a larger body of water and distant city structures under a clear sky.

north park

Public Meeting April 2008

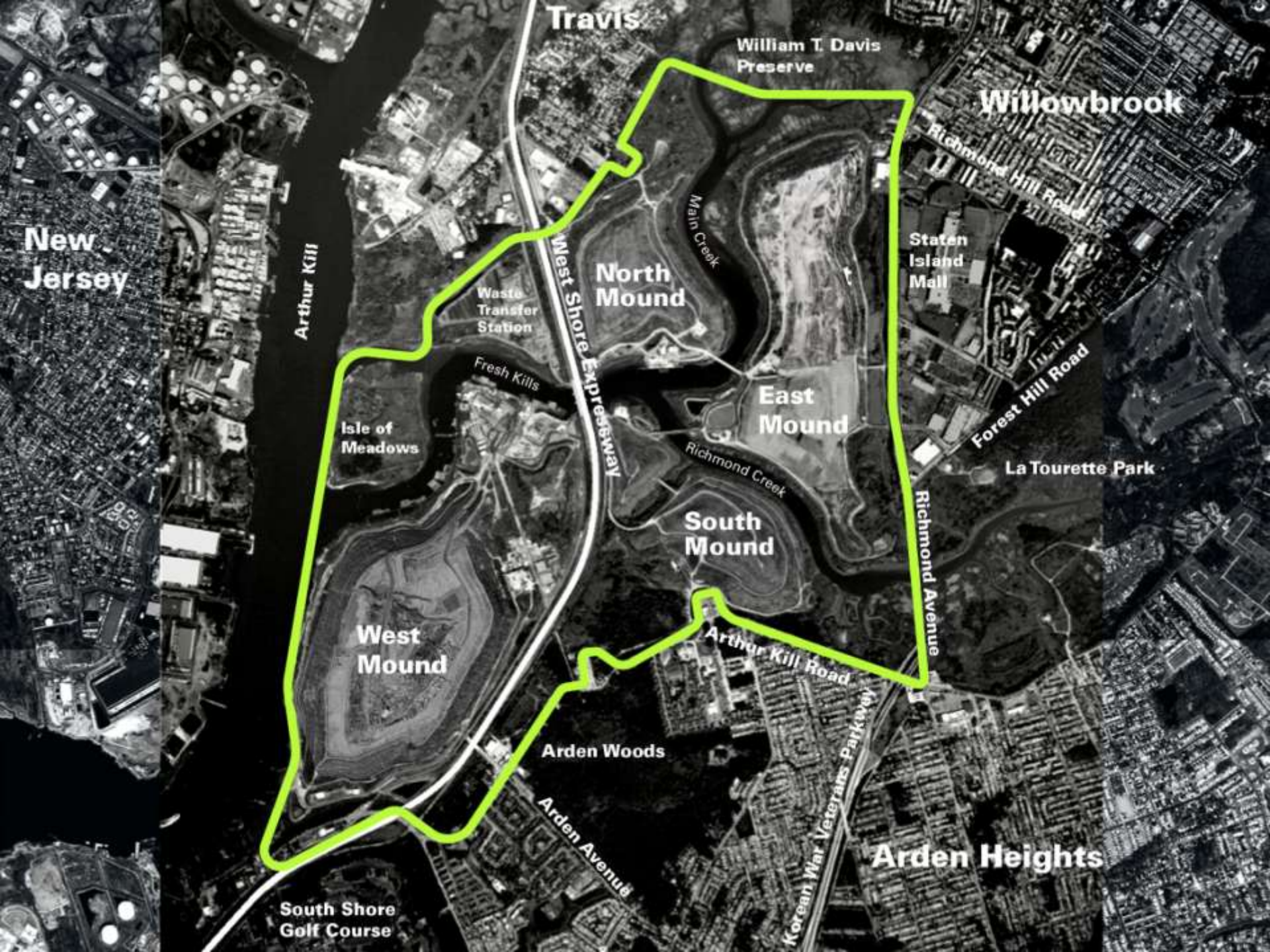
A PROJECT OF THE NEW YORK CITY DEPARTMENT OF PARKS & RECREATION

**first 20 acres of
240-acre north park**



MASTER PLAN





Travis

William T. Davis
Preserve

Willowbrook

New
Jersey

Arthur Kill

North
Mound

Waste
Transfer
Station

Staten
Island
Mall

Isle of
Meadows

Fresh Kills

East
Mound

Richmond Hill Road
Forest Hill Road

La Tourette Park

South
Mound

Richmond Creek

Richmond Avenue

West
Mound

Arthur Kill Road

Arden Woods

Arden Avenue

Arden Heights

South Shore
Golf Course

Korean War Veterans Parkway

site and context

New Springville

WILLIAM T. DAVIS WILDLIFE REFUGE

MAIN CREEK

Simmons Lane

Travis

NORTH PARK

Burke Avenue

Watson Avenue

NE

SCHMUL PARK

Arden Heights

SOUTH MOUND

NORTH MOUND

WEST SHORE EXPRESSWAY

NORTH PARK

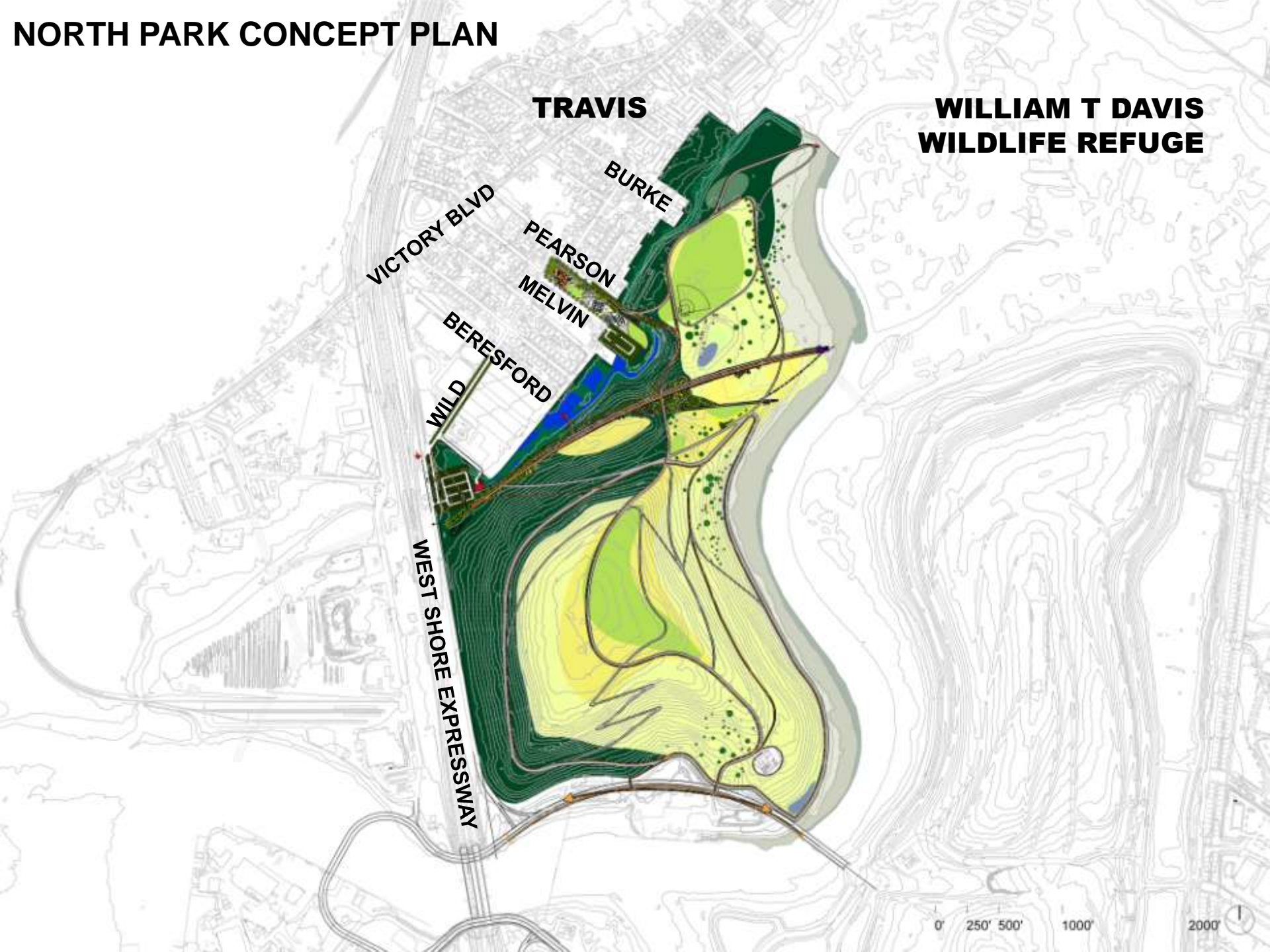
Travis

Roswell Avenue

SCHMUL PARK



NORTH PARK CONCEPT PLAN



TRAVIS

**WILLIAM T DAVIS
WILDLIFE REFUGE**

BURKE

VICTORY BLVD

PEARSON

MELVIN

BERESFORD

WILD

WEST SHORE EXPRESSWAY

SCHMUL PARK RENOVATION



ENTRY



PLAY AREA



BASKETBALL COURTS



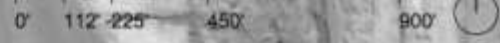
FIRST NORTH PARK PROJECT



Pearson

Melvin

Wild Avenue



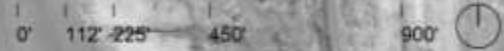
PLAN

- 1 Parking Area
- 2 Tree Nursery
- 3 Sumac Plateau
- 4 Seed Farm
- 5 Bird Tower
- 6 Basin View Platform
- 7 Comfort Station
- 8 Picnic Lawn
- 9 Overlook Deck

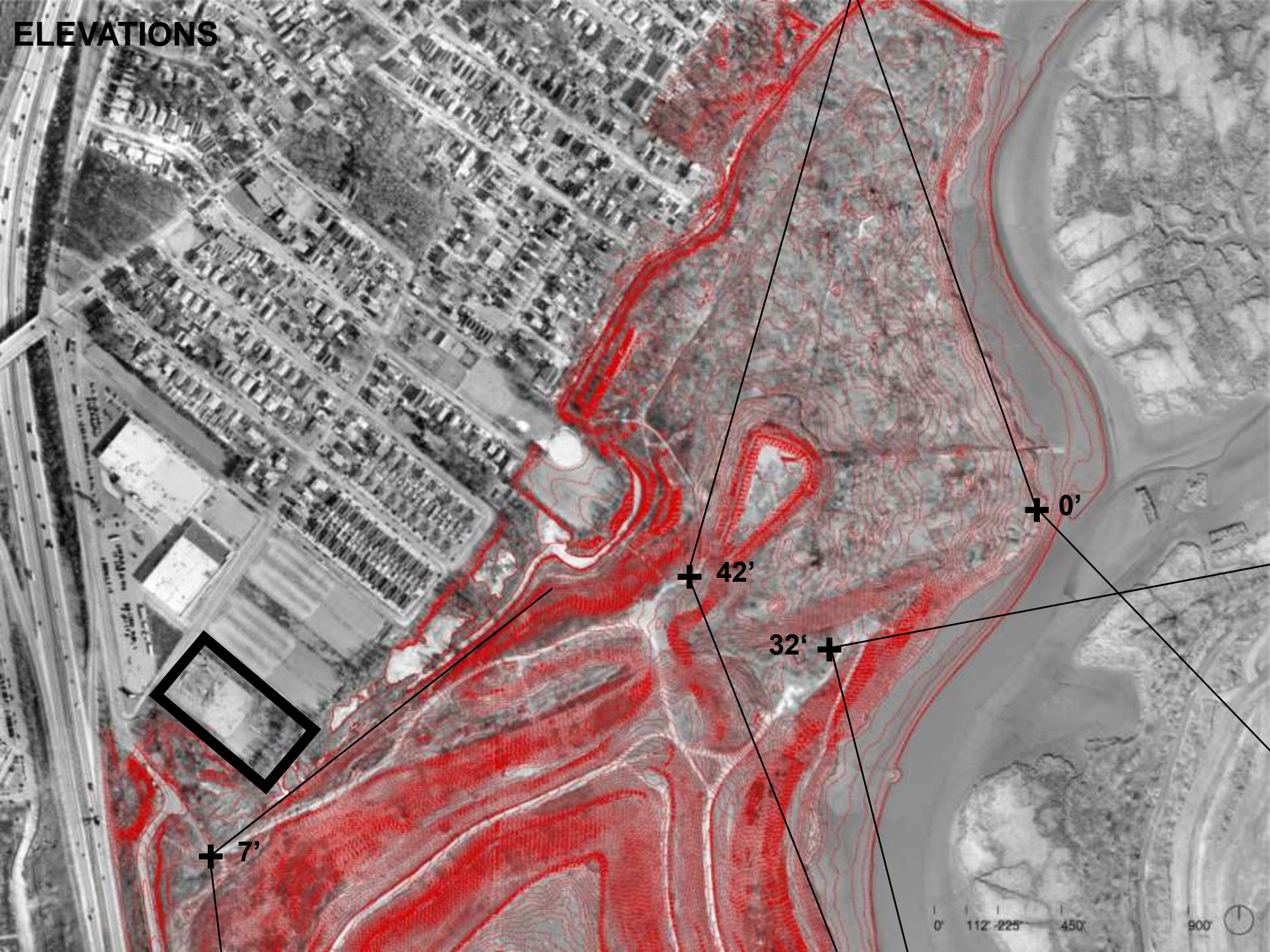




WETLANDS



ELEVATIONS







**landscape and
features**

PLAN

- 1 Parking Area
- 2 Tree Nursery
- 3 Sumac Plateau
- 4 Seed Farm
- 5 Bird Tower
- 6 Basin View Platform
- 7 Comfort Station
- 8 Picnic Lawn
- 9 Overlook Deck



PARKING ENTRY



75-SPACE PARKING AREA

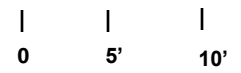
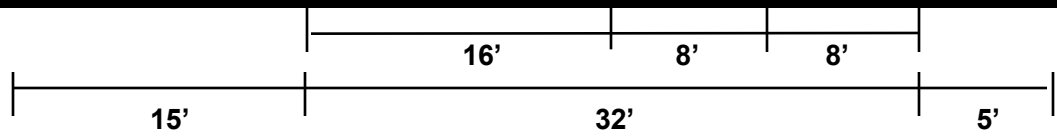
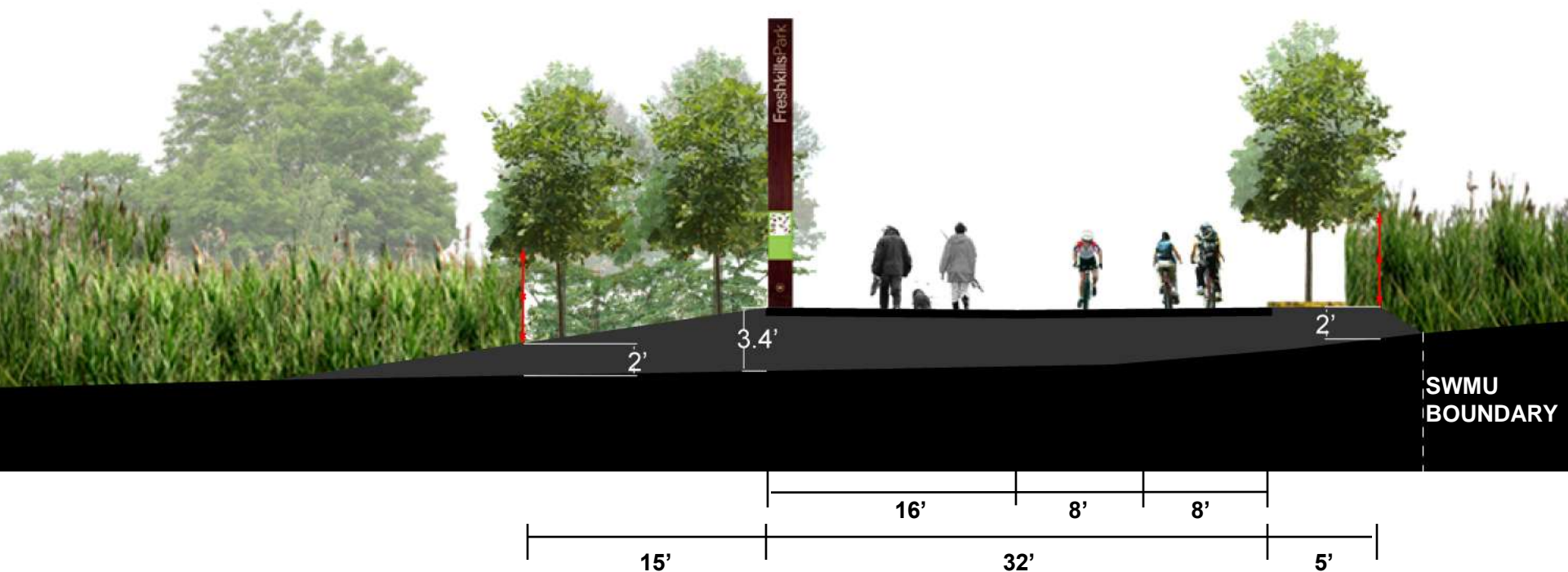


ENTRY PATH

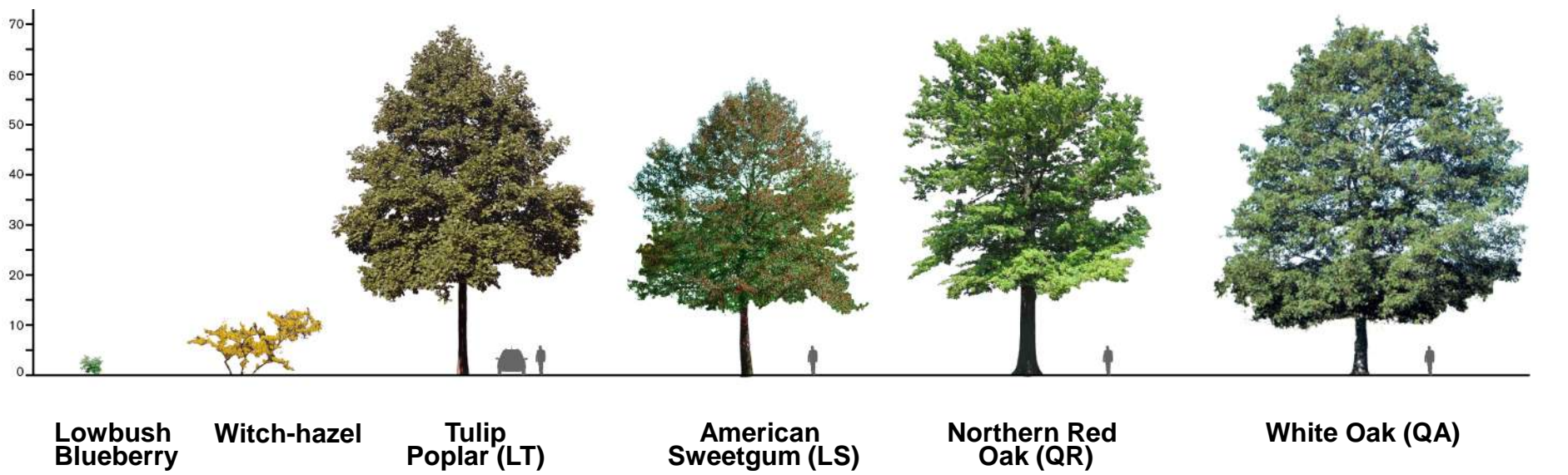




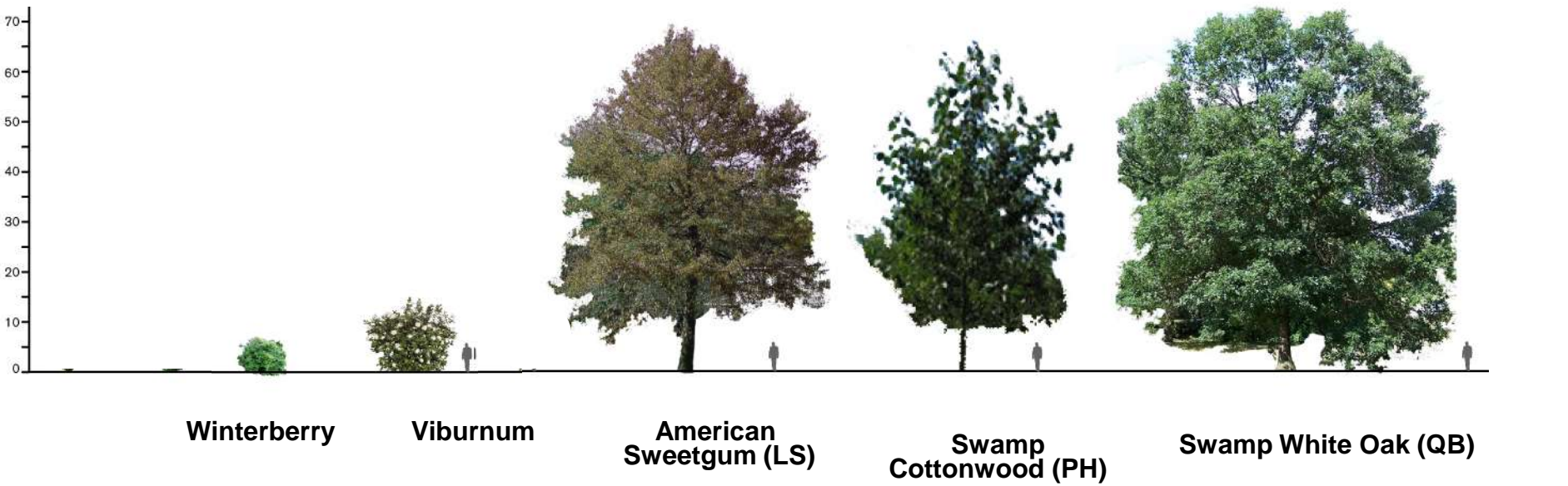
ENTRY



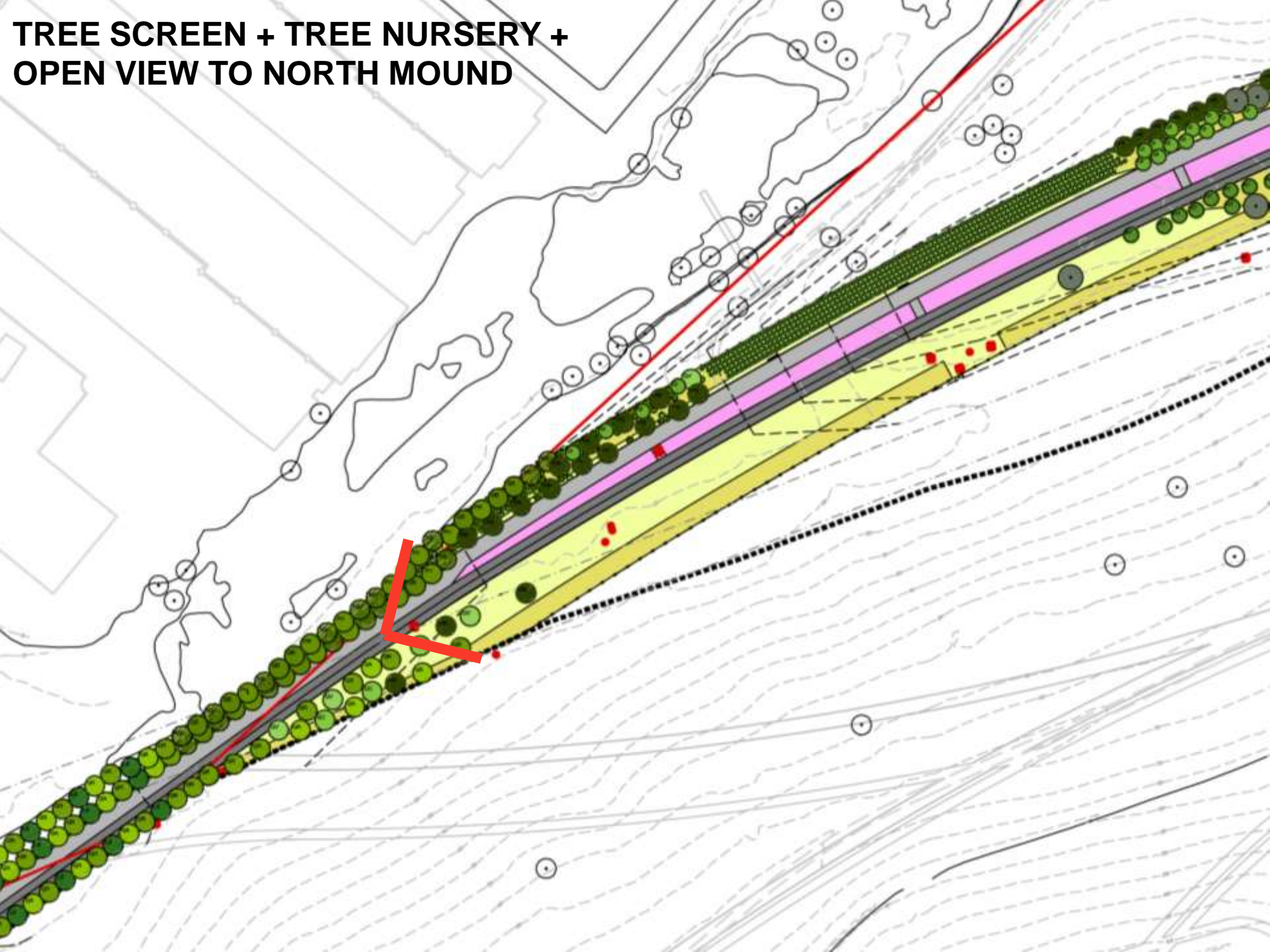
Lowland Mesic : Oak-Tulip Forest



Lowland Mesic : Swamp Forest



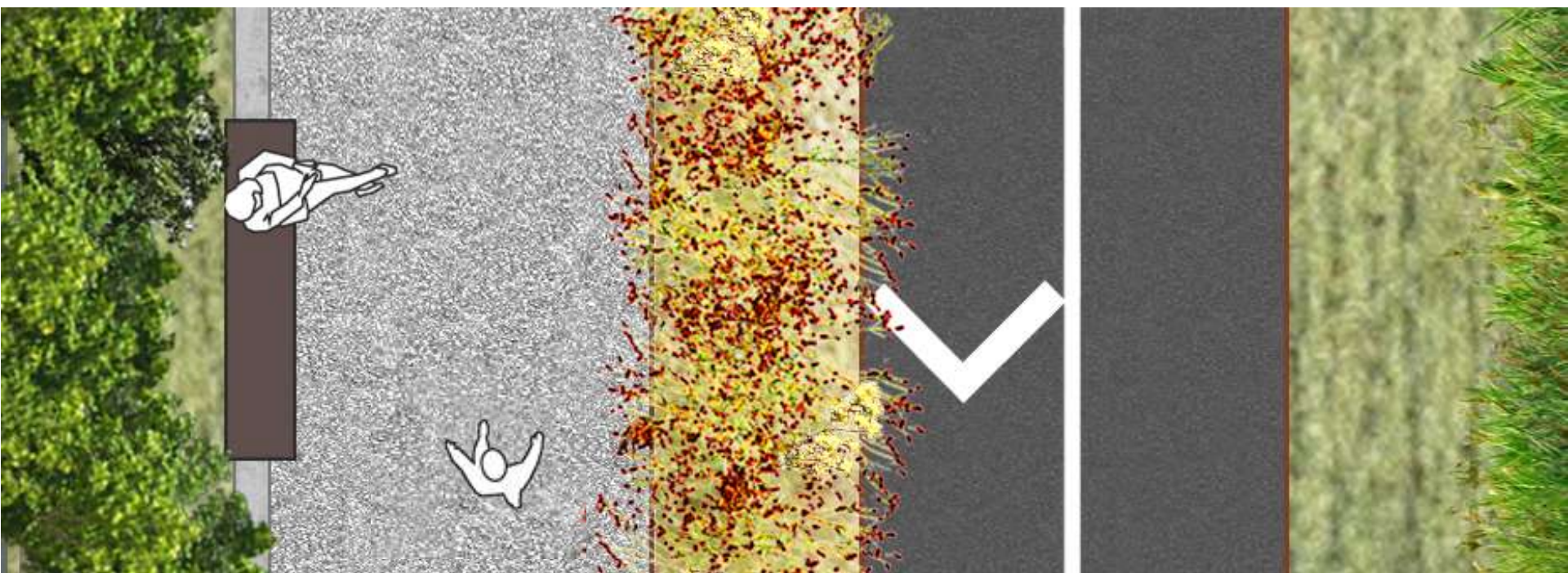
**TREE SCREEN + TREE NURSERY +
OPEN VIEW TO NORTH MOUND**



ARC PATH



MATERIALS



1.5' concrete edging
furnishing strip

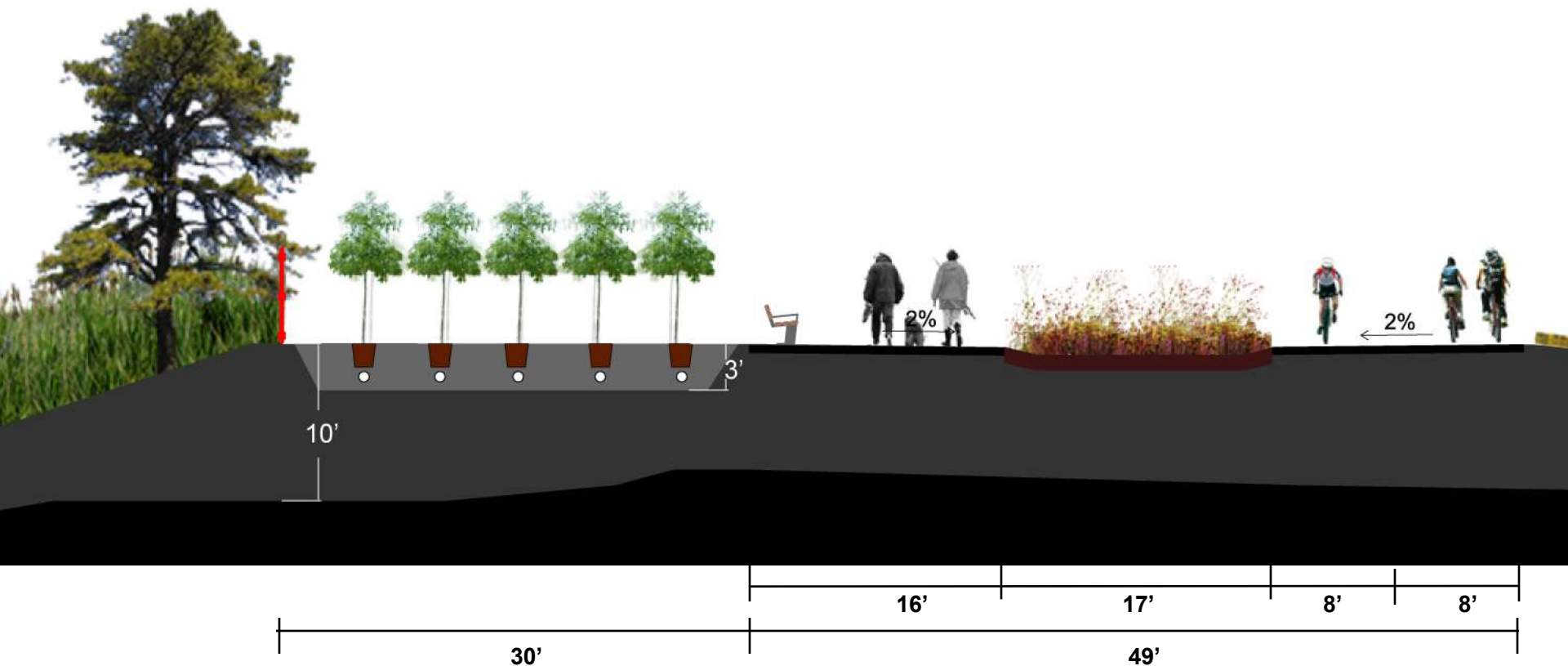
14.5' slag

steel edging

16' asphalt w/ bold striping

steel edging

TREE NURSERY ON NORTH SIDE OF ARRIVAL ARC



“POT-IN-POT” TREE NURSERY



FIELD OF SOCKETS



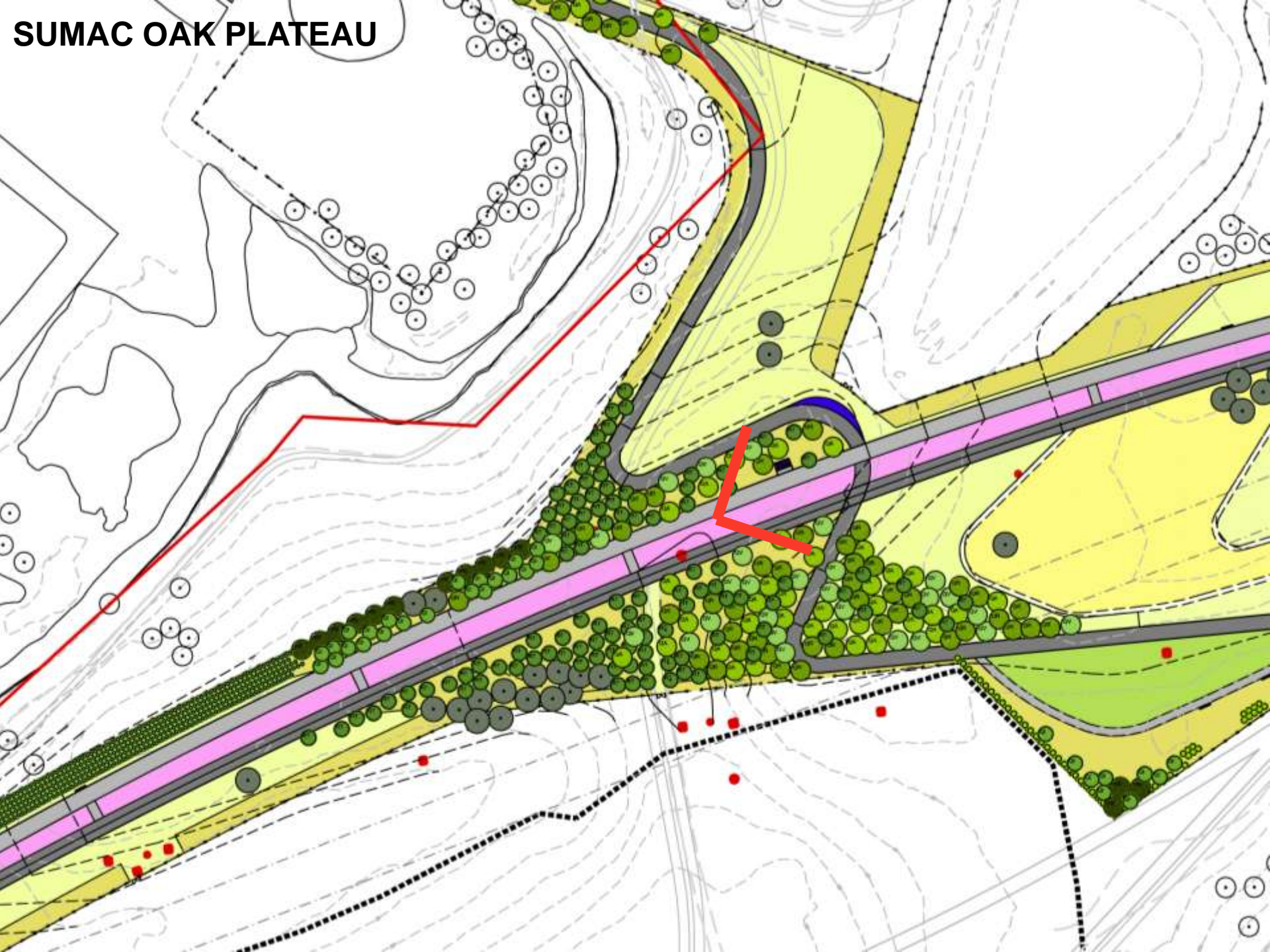
NURSERY TREES WILL BE PLANTED THROUGHOUT FRESH KILLS



NURSERY LANDSCAPE WITH CONTRASTING FEATURE SWALE



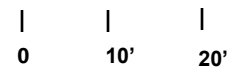
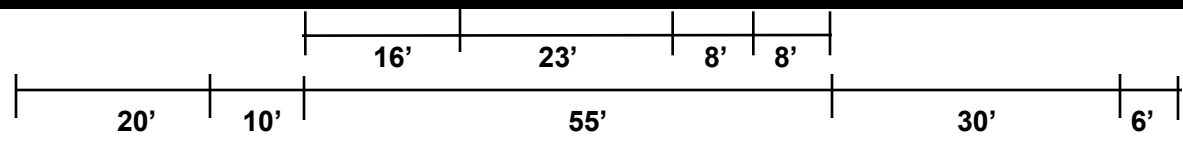
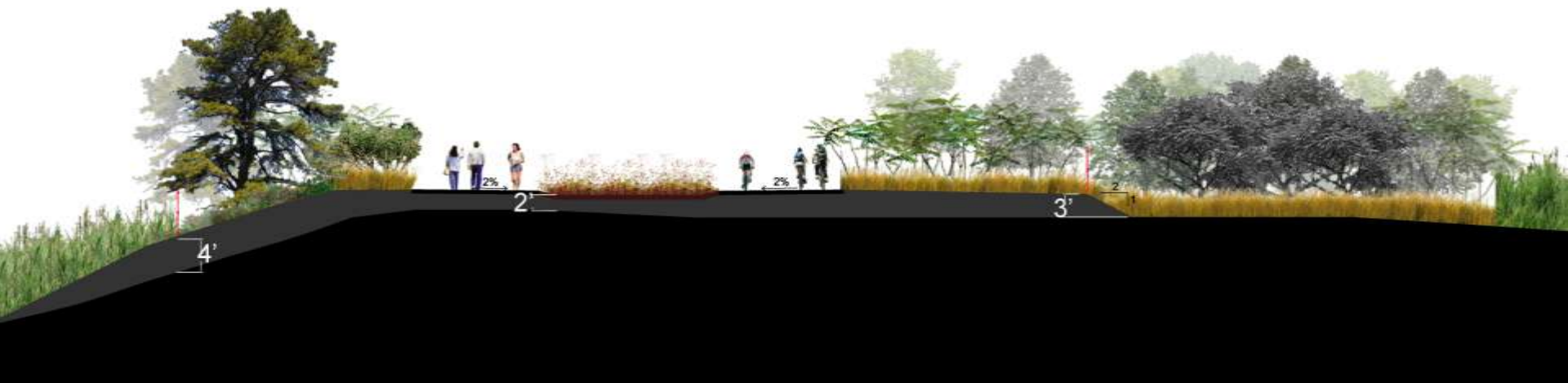
SUMAC OAK PLATEAU



PLATEAU

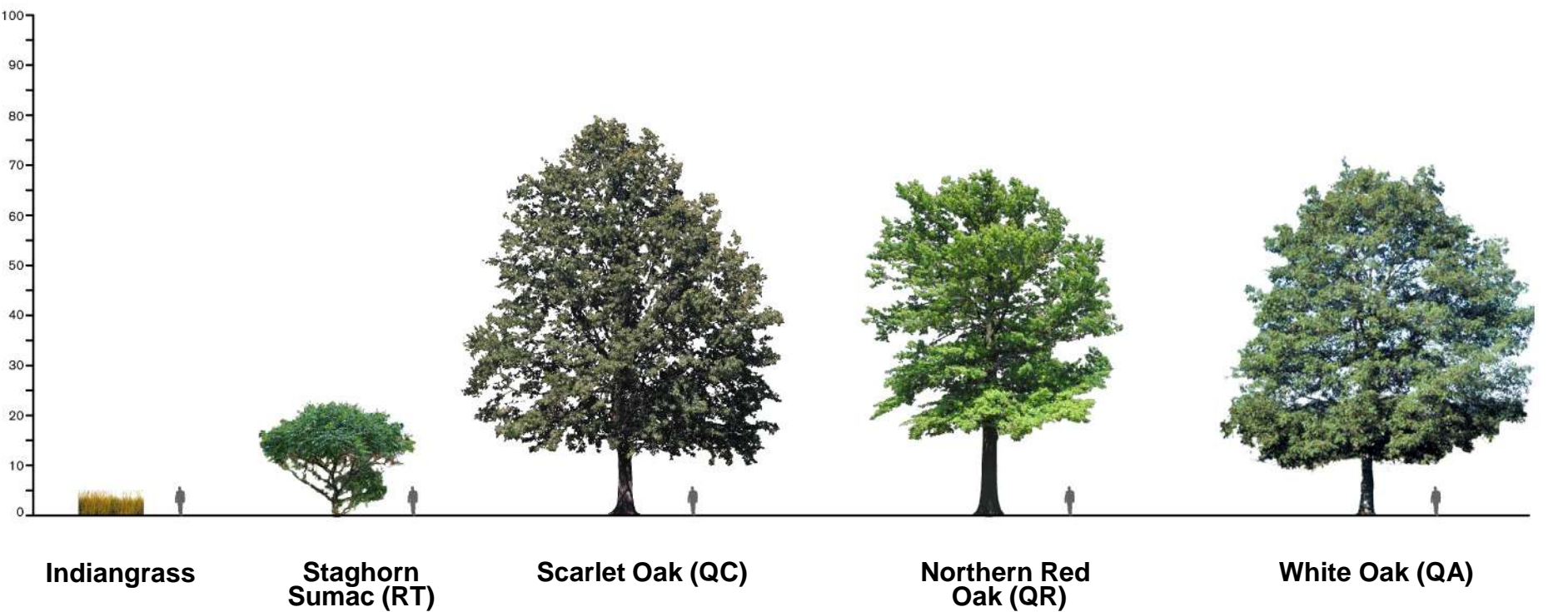


SUMACS AND OAKS ON THE PLATEAU



SUMAC OAK PLATEAU

Upland Dry : Maritime Oak Forest



4-ACRE MEADOW SEED FARM



PLATEAU AND SEED FARM



12 YEAR CROP ROTATION, 20 POSSIBLE SPECIES

Plot #	Year 1	Year 2	Year 3	Year 4	Year 5	Year 6	Year 7	Year 8	Year 9	Year 10	Year 11	Year 12
1	AV						SC			CC		
2	AC			CC			SL			EF		
3	EG			SC			AV					
4	CC			SL			AS			AC		
5	PV						CC			EG		
6	AI			CC			EF			SNM		
7	SC			AS			PV					
8	SL			EF			AC			CC		
9	CC			SJ			SP			AS		
10	SS						CC			SP		
11	AS			CC			SNM			AI		
12	SJ			SP			SS					
13	SNA			SNM			AI			CC		
14	CC			AC			SNA			CC		
15	SN						CC			SJ		
16	EF			CC			EG			SC		
17	SNM			AI			SN					
18	SP			SNA			TD					
19	CC			EG			SJ			SNA		
20	TD						CC			SL		

	Warm-Season Grass
	Forb
	Cover Crop

AI	Asclepias incarnata	SJ	Solidago juncea
AC	Apocynum cannabinum	SNM	Solidago nemoralis
AS	Asclepias syriaca	SN	Sorghastrum nutans
AV	Andropogon virginicus	SS	Schizachyrium scoparium
EF	Eupatorium fistulosum	SL	Symphotrichum laeve
EG	Euthamia graminifolia	SNA	Symphotrichum novae-angliae
PV	Panicum virgatum	SP	Symphotrichum pilosus
SC	Solidago canadensis	TD	Tripsacum dactyloides

FLOWERING MEADOW PALETTE

Dry and moist Native Grassland



Wild Lupine



**Purple
Coneflower**



**Pale Purple
Coneflower**



**Purple Joe
Pye Weed**



Smooth Aster



Black-Eyed Susan



Canada Goldenrod



**Grass-leaved
Goldenrod**



Gray Goldenrod



**Early
Goldenrod**



**Butterfly
Milkweed**



Frost Aster

NATIVE MEADOW PALETTE

Dry and moist Native Grassland



Little Bluestem



Indiangrass



**Pennsylvania
Sedge**



Blue-joint Reedgrass



Side oats Grama



Broomsedge



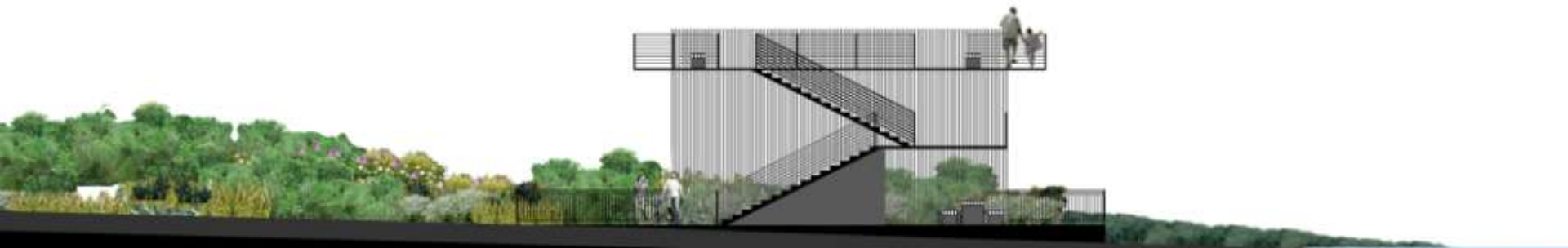
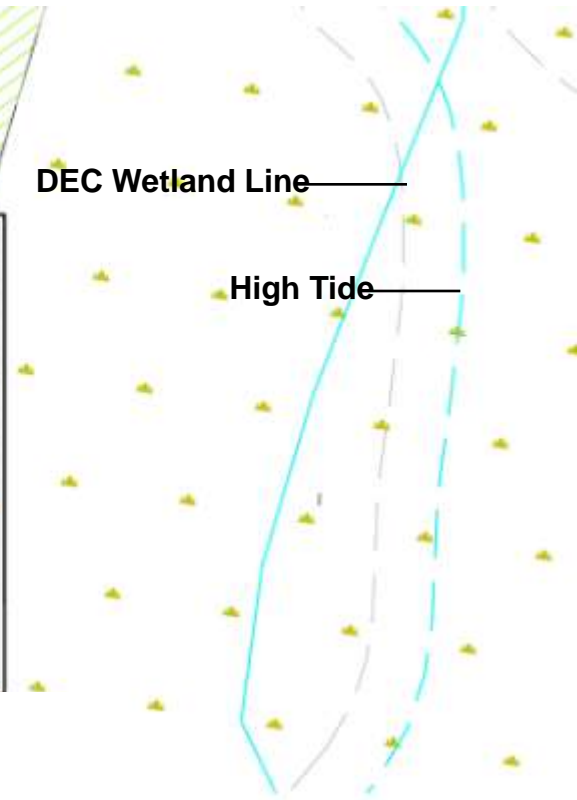
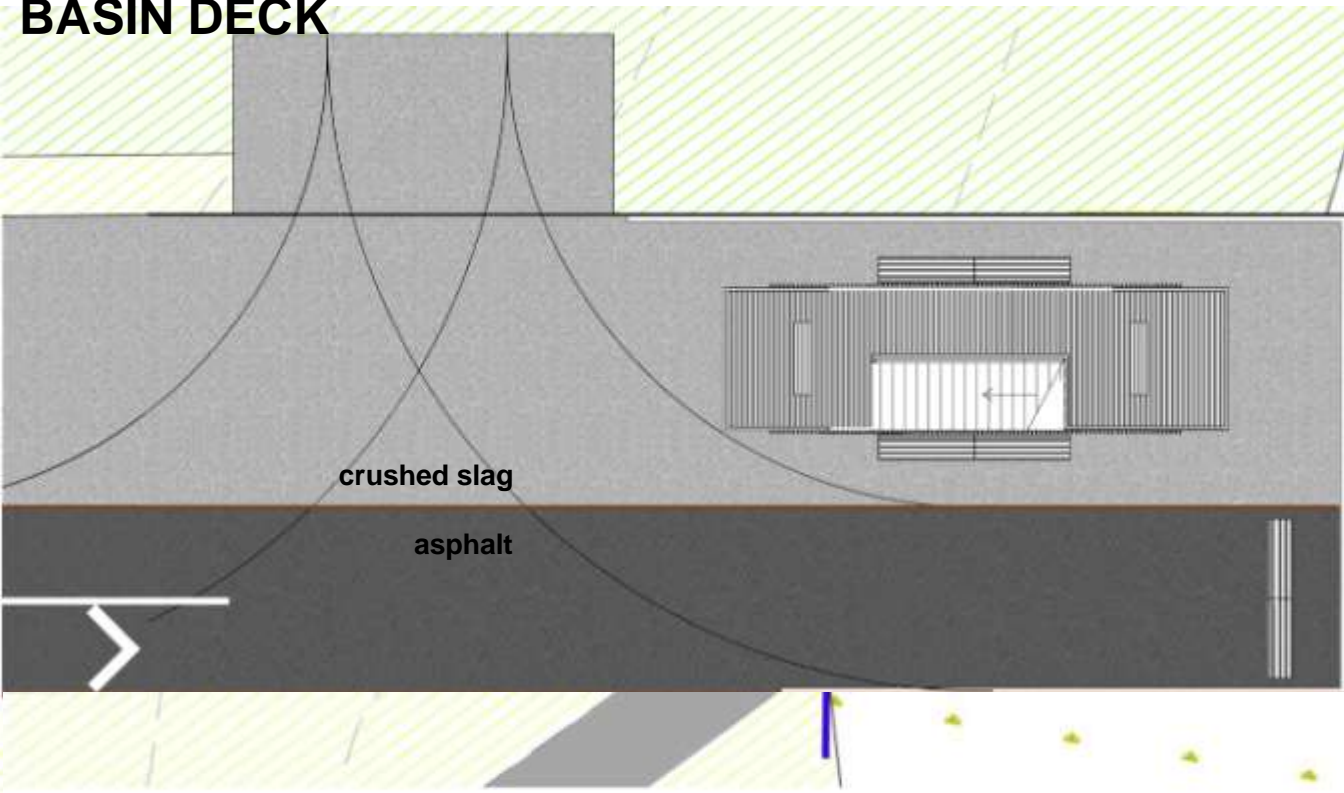
Switchgrass



Big Bluestem



BASIN DECK



Bird Tower Deck
100'



BIRD TOWER



BIRD TOWER-STAIR, DECKS, + STORAGE



BIRD TOWER + CLADDING



BIRD TOWER + CLADDING





PLAN

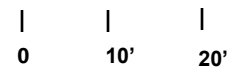
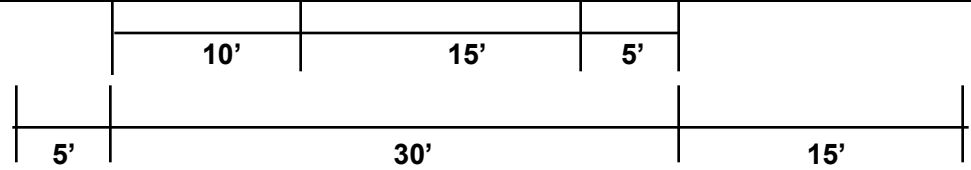
- 1 Parking Area
- 2 Tree Nursery
- 3 Sumac Plateau
- 4 Seed Farm
- 5 Bird Tower
- 6 Basin View Platform
- 7 Comfort Station
- 8 Picnic Lawn
- 9 Overlook Deck



ENTRY



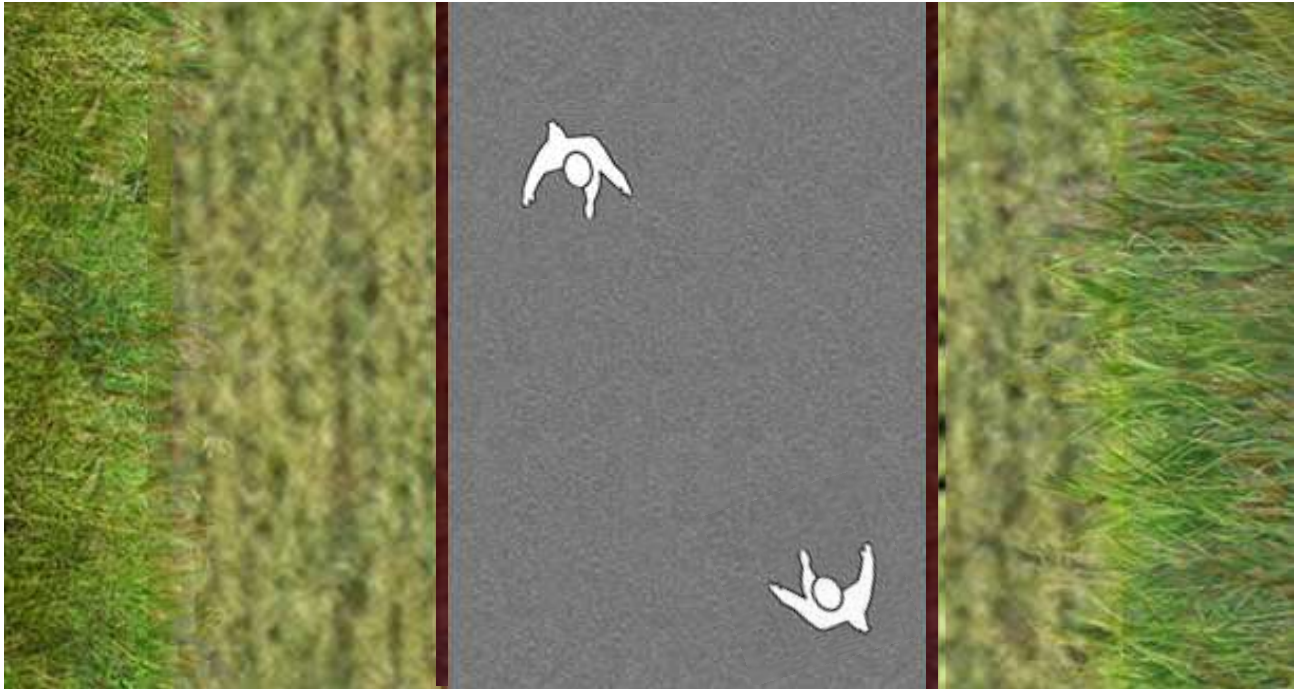
SCHMUL PATH (TYP)



MOWN CORRIDOR



SCHMUL PATH MATERIALS

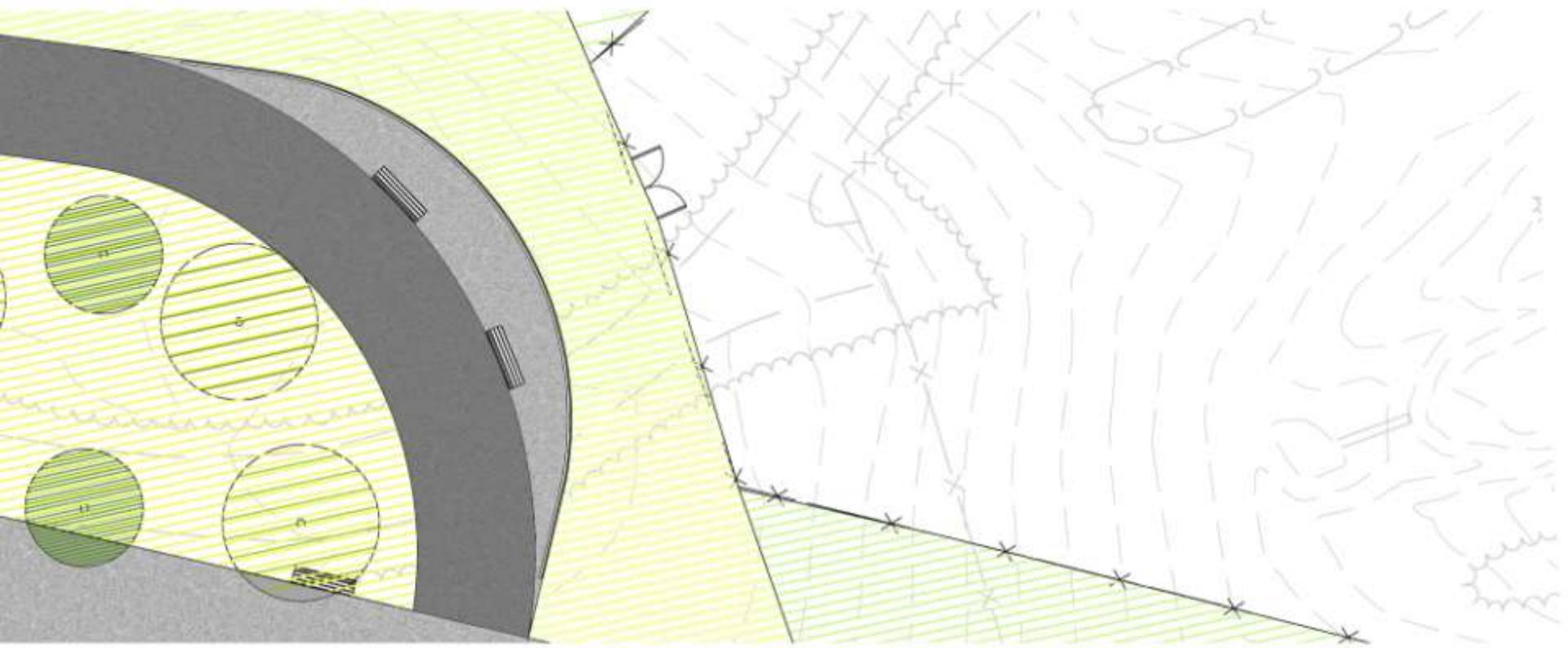


straight steel edge

15' asphalt

straight steel edge

BASIN DECK



Oak Forest

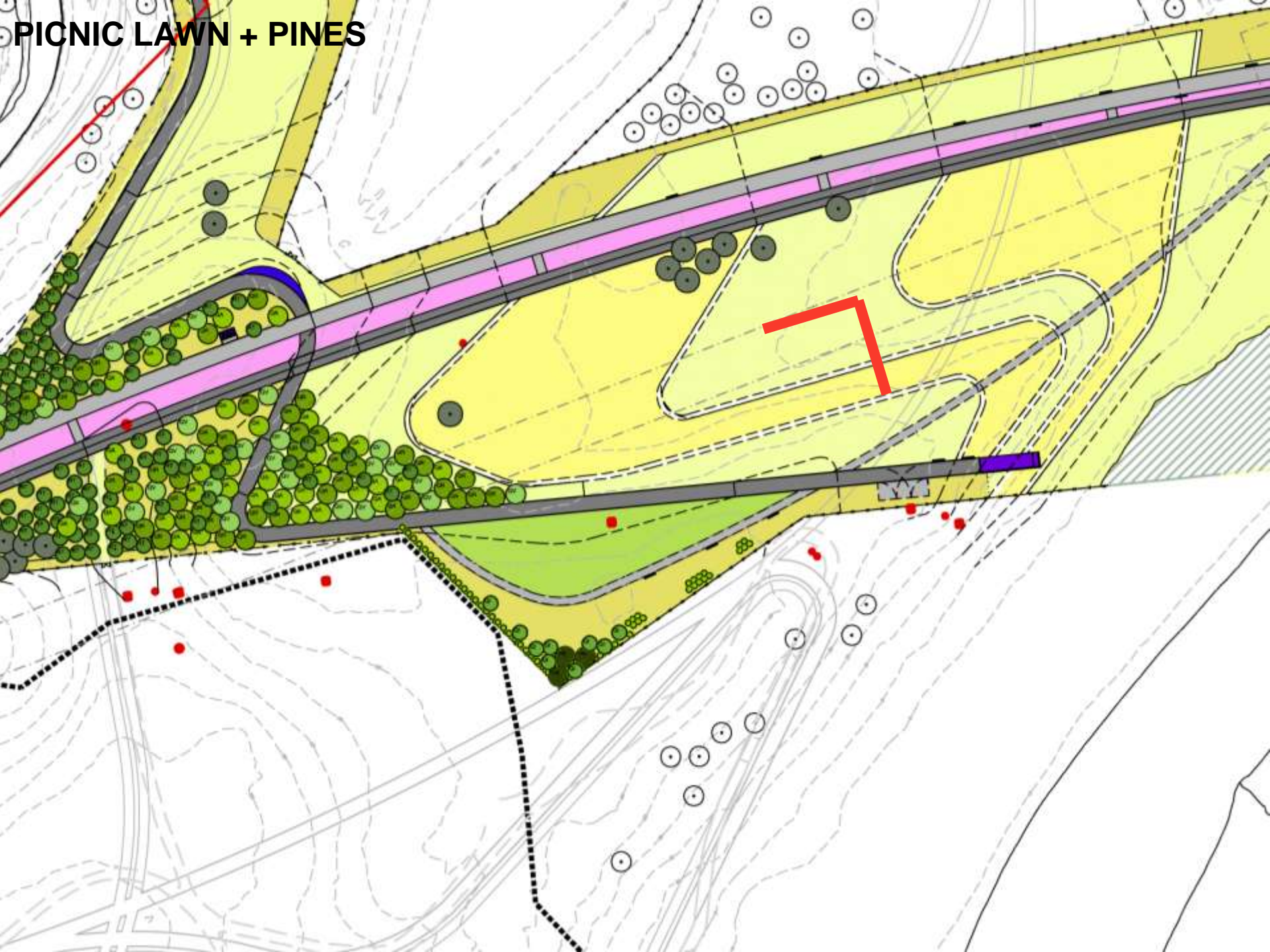
Path
15'

Basin Deck
10' max

Mown corridor
15' min

0' 4' 8' 16' 32'

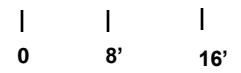
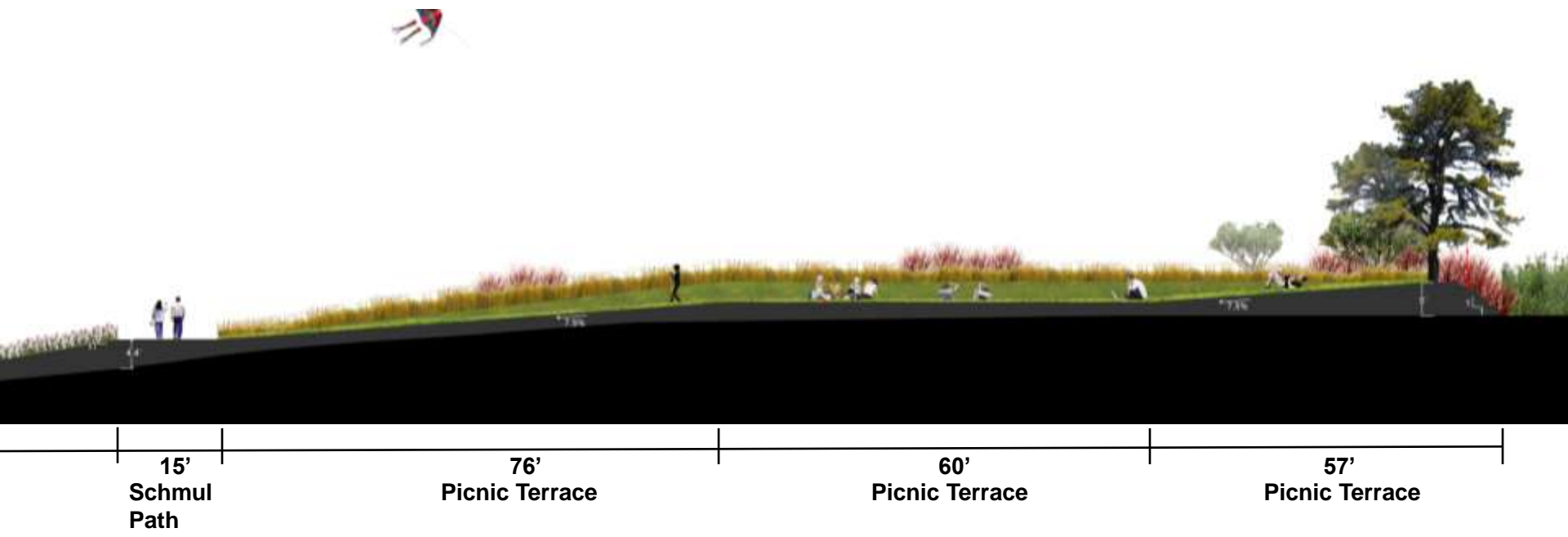
PICNIC LAWN + PINES



PICNIC LAWN



PICNIC AREA



BENCH + TABLE @ BIRD TOWER + PICNIC LAWN



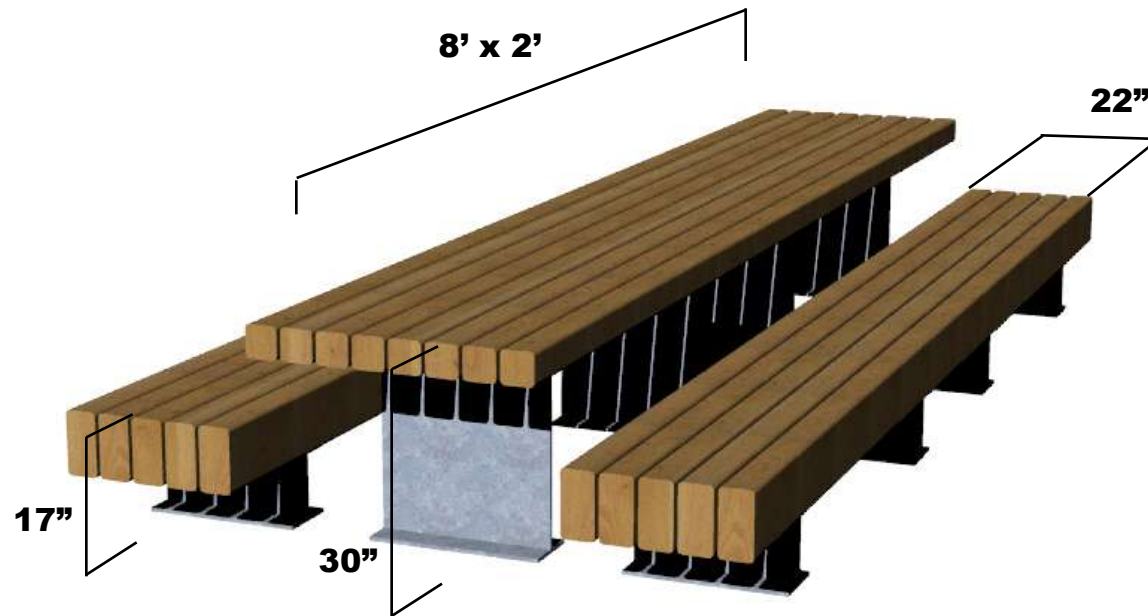
modular bench + table

-bull nose slats

-black locust slats + galvanized steel support

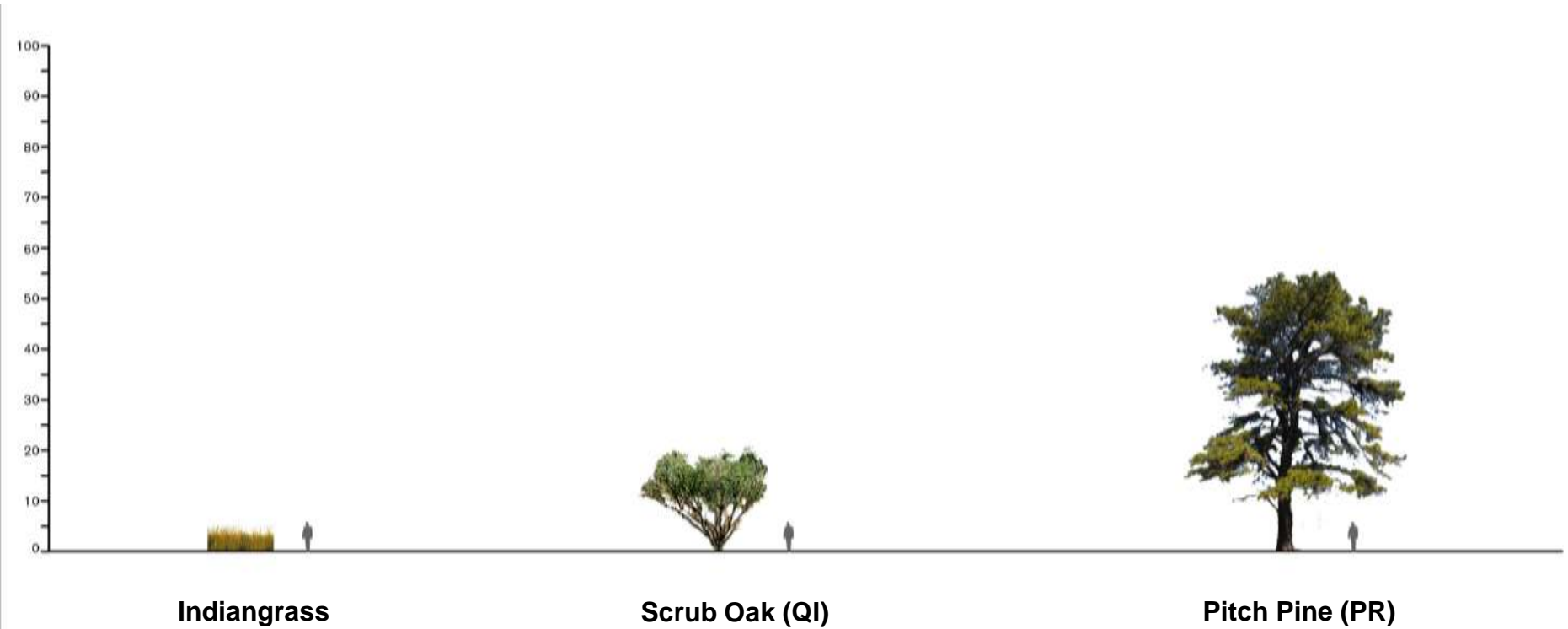
-16' long double, 8' single unit

- bench wood slats 4" x 8" x 8', .5" spacing between slats



TREE PALETTE- PINE BARRENS

Upland Dry: Pitch Pin-Scrub Oak Barrens

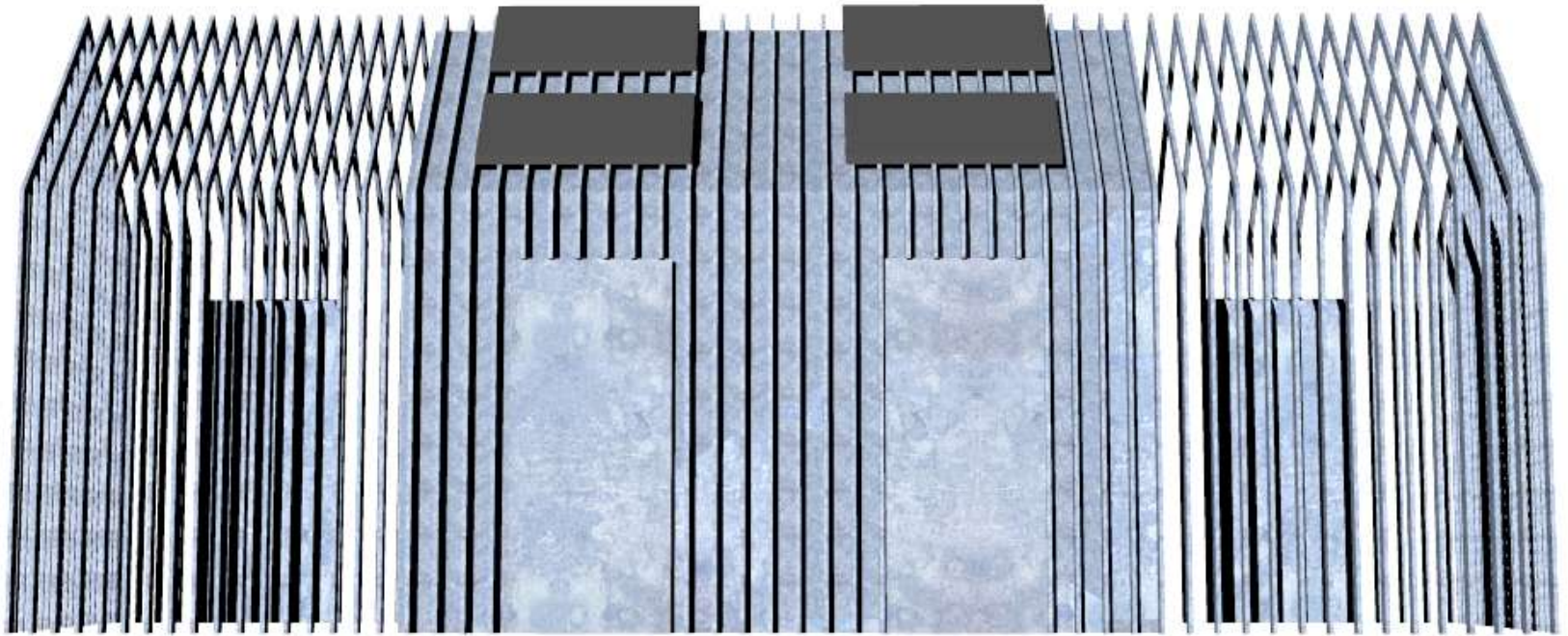


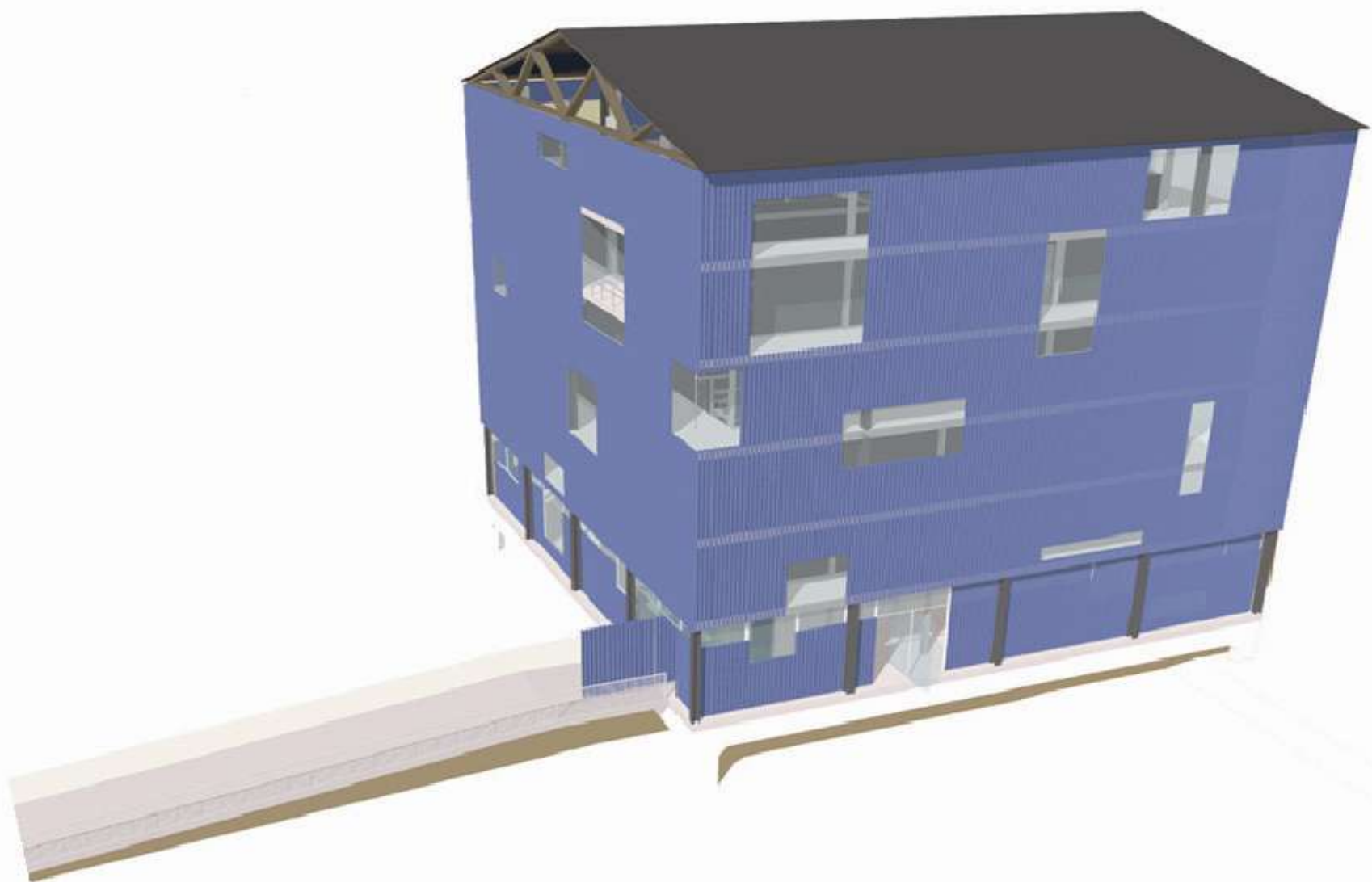


COMFORT STATION ON THE PLATEAU

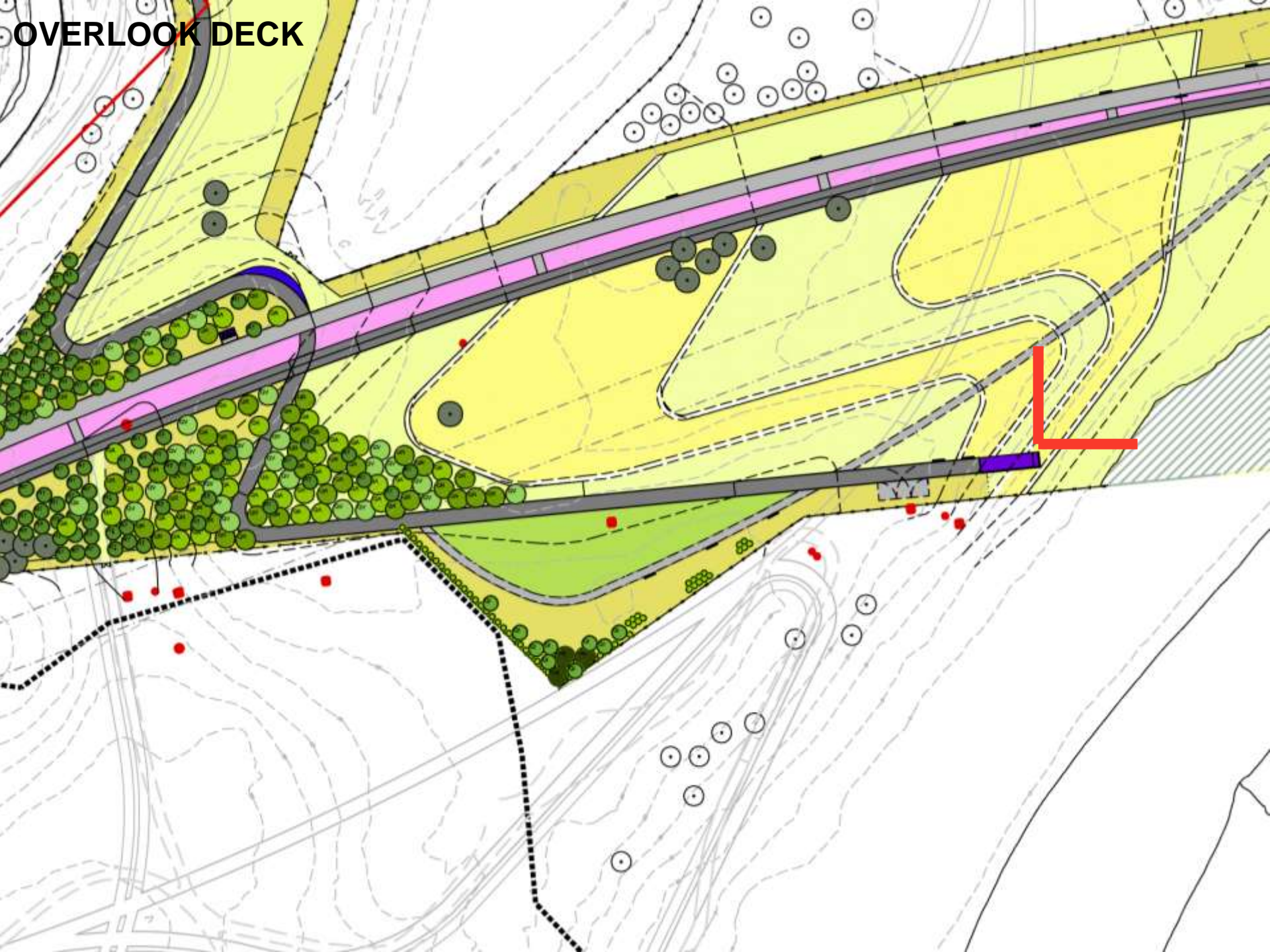


COMFORT STATION WITH COMPOSTING TOILETS AND SOLAR PANELS



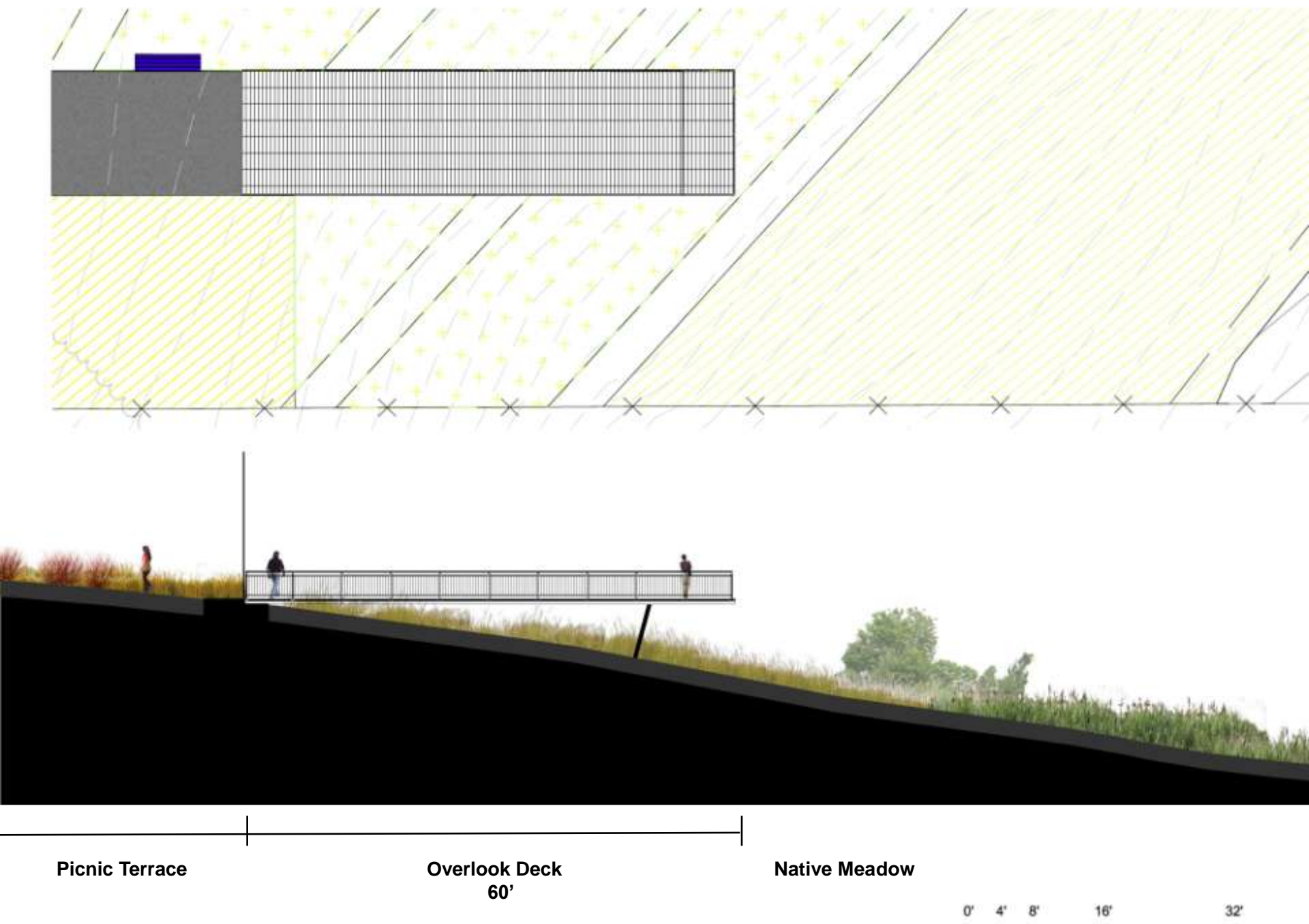






OVERLOOK DECK

OVERLOOK DECK



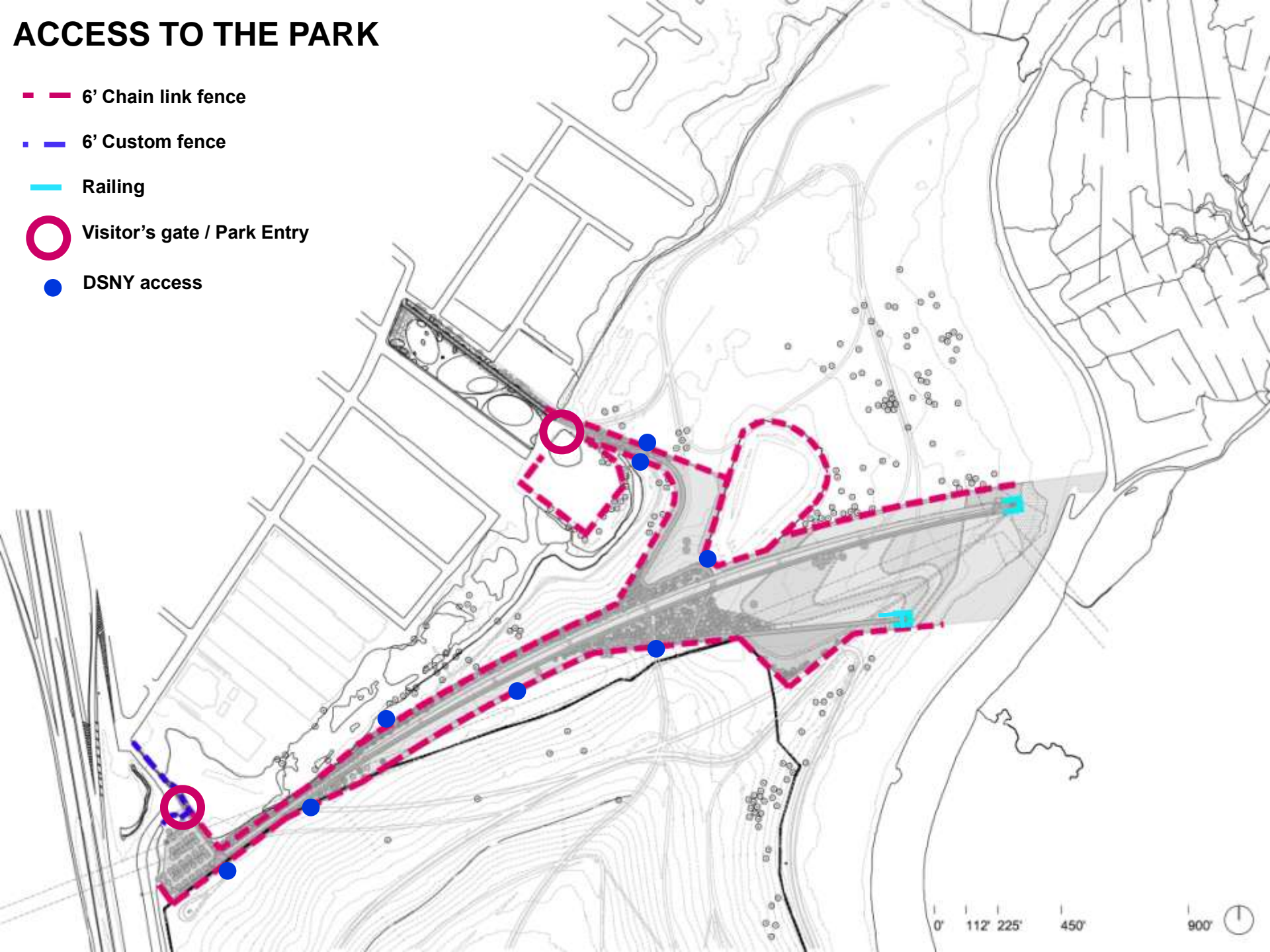
VIEW FROM DECK TO BIRD TOWER



access and safety

ACCESS TO THE PARK

- 6' Chain link fence
- 6' Custom fence
- Railing
- Visitor's gate / Park Entry
- DSNY access



PARK SECURITY

- The park will be open from dawn to dusk.
- Gates will be locked at night.
- Path design allows for emergency vehicle access and routine patrol.

In conjunction with the next phase of design, the Parks, Police and Sanitation Departments will be developing a park security plan. Measures that are being considered include:

- Security patrols
- Call boxes
- Video cameras

PARKING ENTRY



LANDFILL SAFETY MONITORING

- 1 Parking Area
- 2 Tree Nursery
- 3 Sumac Plateau
- 4 Seed Farm
- 5 Bird Tower
- 6 Basin View Platform
- 7 Comfort Station
- 8 Picnic Lawn
- 9 Overlook Deck



HEALTH AND SAFETY

- Minimum of 2 feet of clean soil
- Air and water quality monitoring wells located in North Park
- Soil testing where necessary prior to final design and construction
- Areas of the park not yet improved are fenced
- All infrastructure will modified to prevent vandalism
- Site management plan and site design will be reviewed by the Department of Environmental Conservation
- No area of the park will be opened to the public until it is safe for recreational use



Byxbee Park

palo alto, california

150 acres





Dyer Boulevard Park

west palm beach, florida

540 acres





Flushing Meadows Corona Park

flushing, queens

1255 acres

















www.nycgovparks.org/freshkills

PROJECT OF NEW YORK CITY DEPARTMENT OF PARKS & RECREATION