



ROCKAWAY BOARDWALK

Community Board 14 Meeting

January 14, 2014



Introduction

Agenda



- Design Presentation
- Construction Management Overview

Community Input



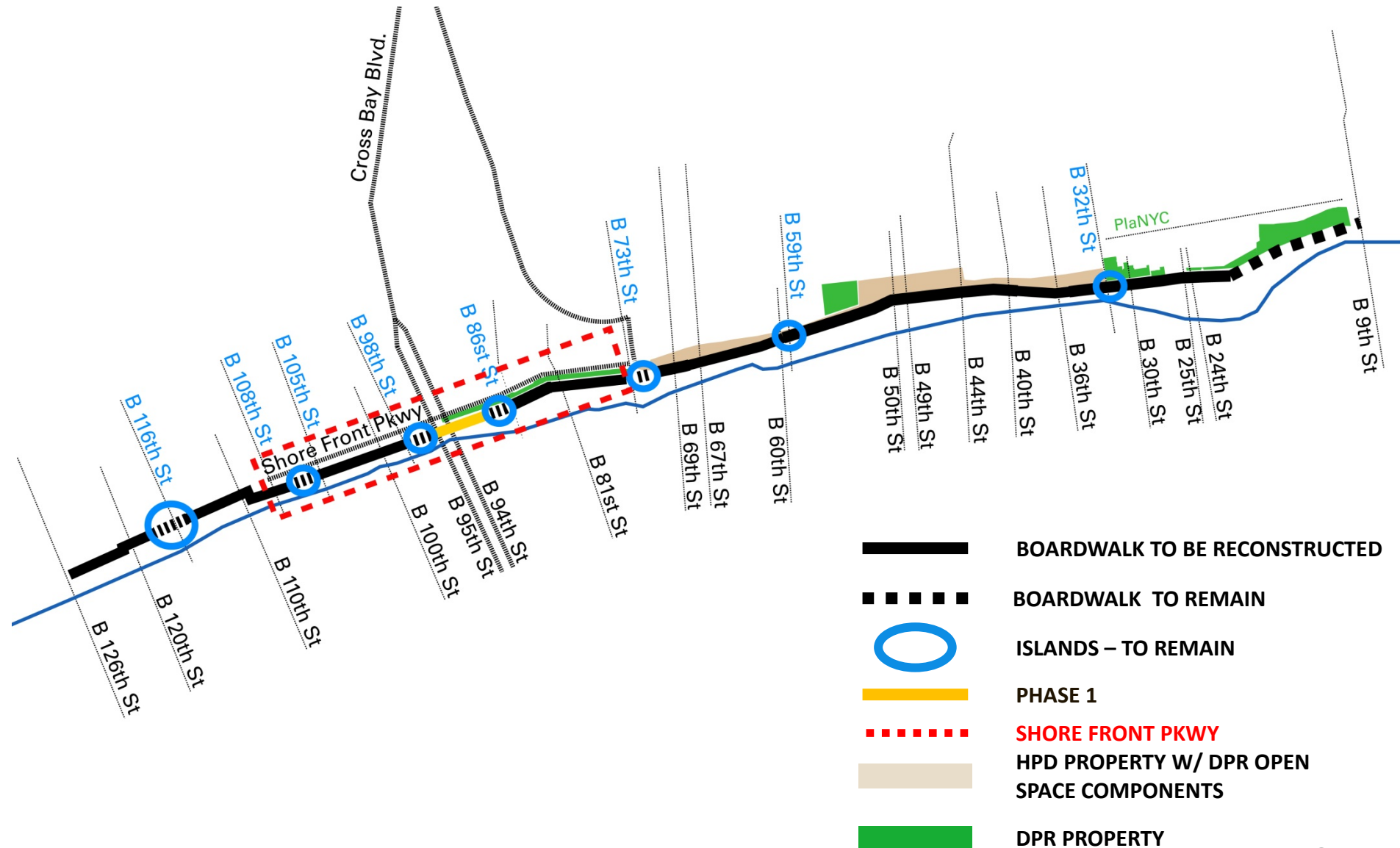
Meeting	Date
September 17, 2013	CB14 Parks Committee Presentation: Background and Constraints
September 23/24/25, 2013	Neighborhood Listening Sessions: Access, Surface, Recreation and Boardwalk Design
October 8, 2013	Full CB14 Meeting: Update and General Design Principles
October 23, 2013	Community Listening Session: Access, Surface and Amenities
November 6, 2013	Conceptual Plan Workshop: Recreation, Access, Natural Resources and Resiliency
November 18, 2013	CB14 Parks Committee Presentation: Preliminary Architectural Concepts
November 25, 2013	Conceptual Plan Workshop: Recreation, Access, Natural Resources and Resiliency
December 5, 2013	Conceptual Plan Workshop: Opportunity Sites
December 17, 2013	Full CB14 Meeting: Engineering and Pile Update and Phasing Overview



Design Presentation

- Design Status
- Renderings & Views
- Phase 1 Access Points
- Engineering Design

Scope Diagram



Existing Condition



Phase 1 Bird's Eye View – Day



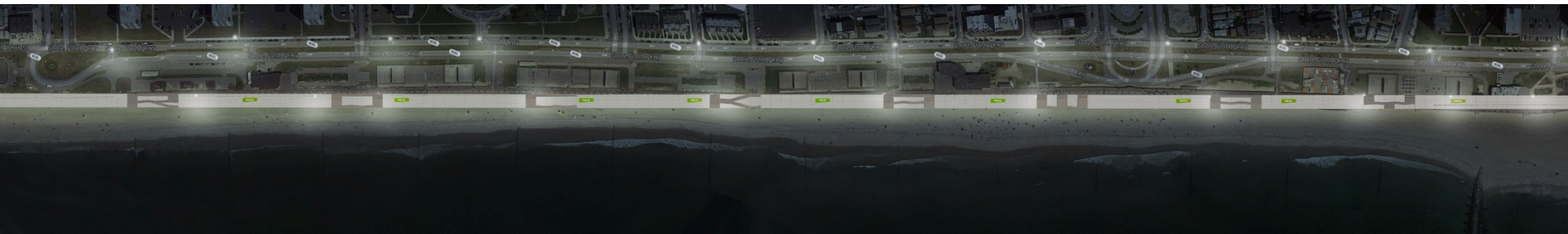
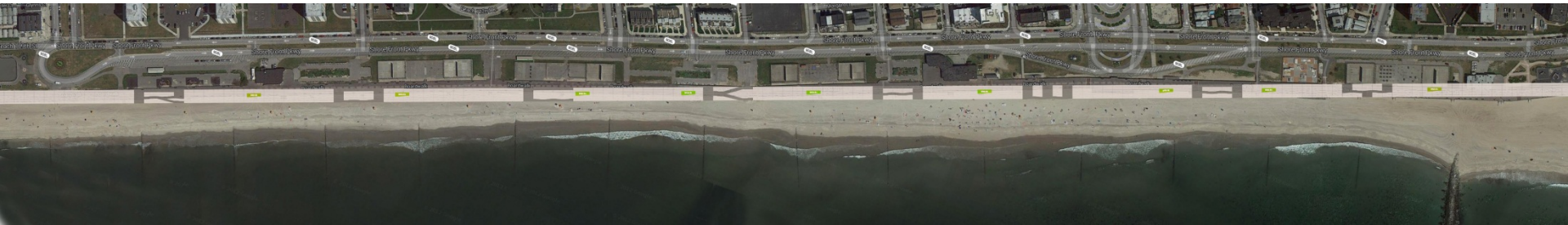
Phase 1 Bird's Eye View – Night



Phase 1 Proposed Design



Aerial View – Day and Night

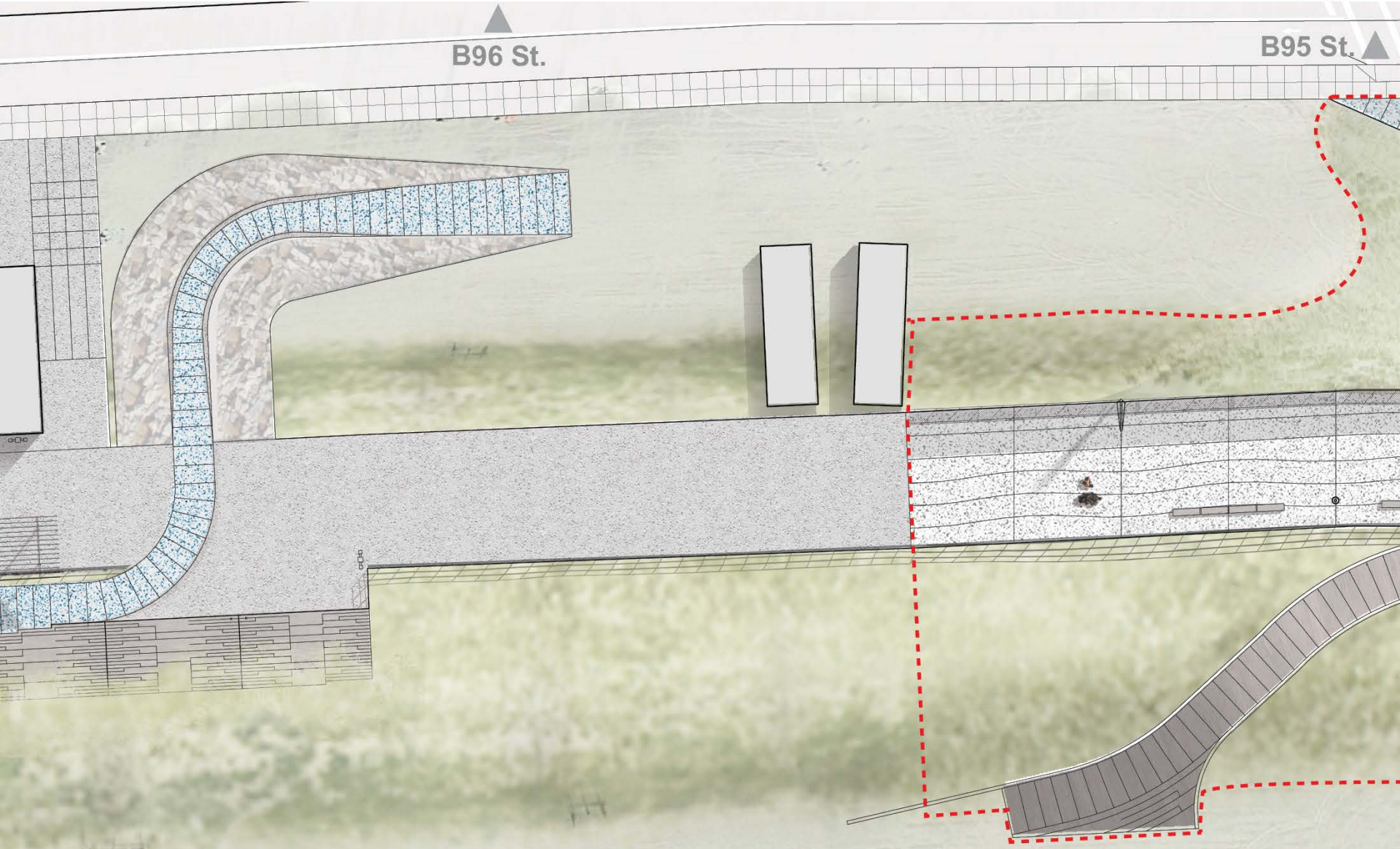


Phase 1 Scope

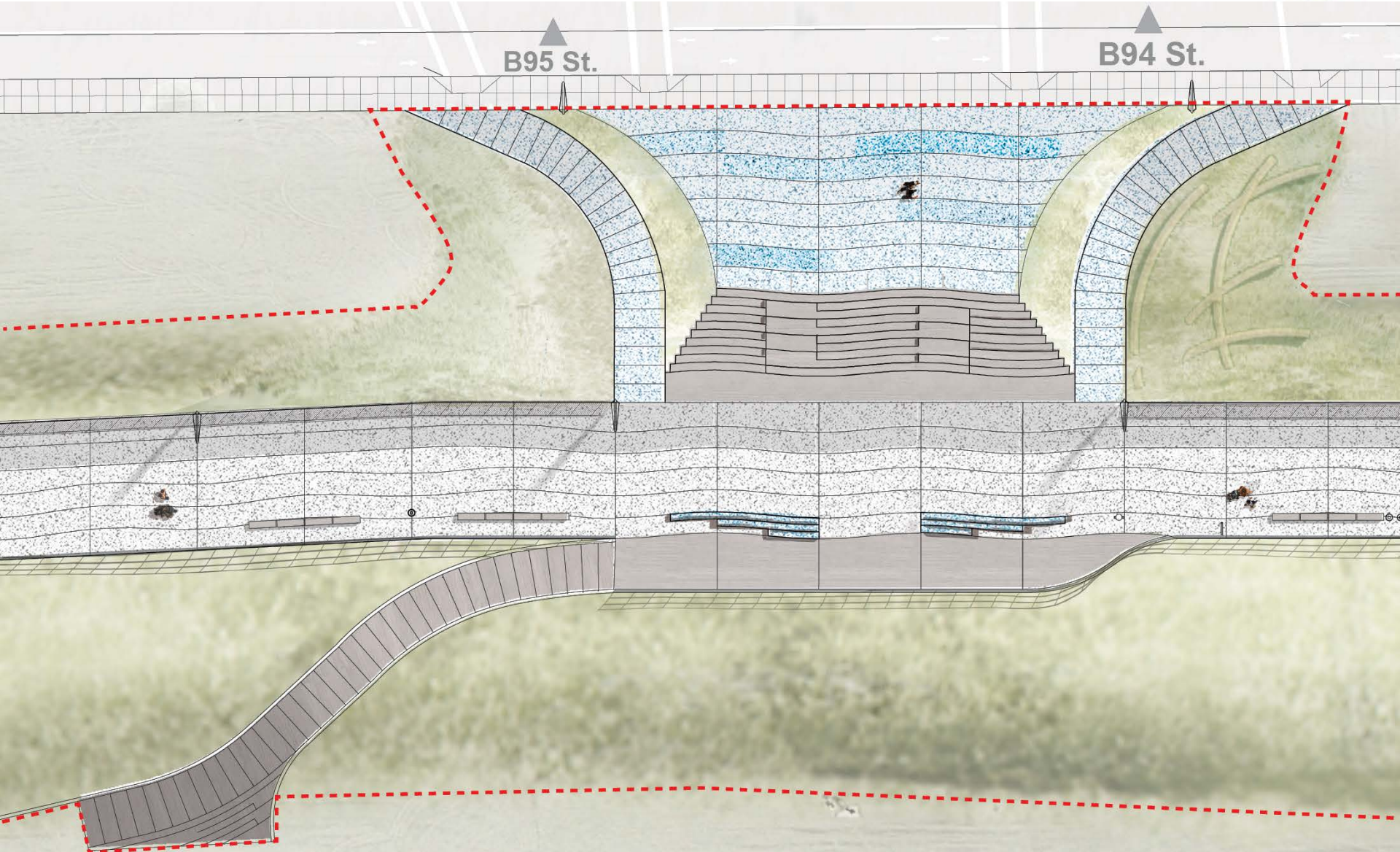


----- PHASE 1 SCOPE

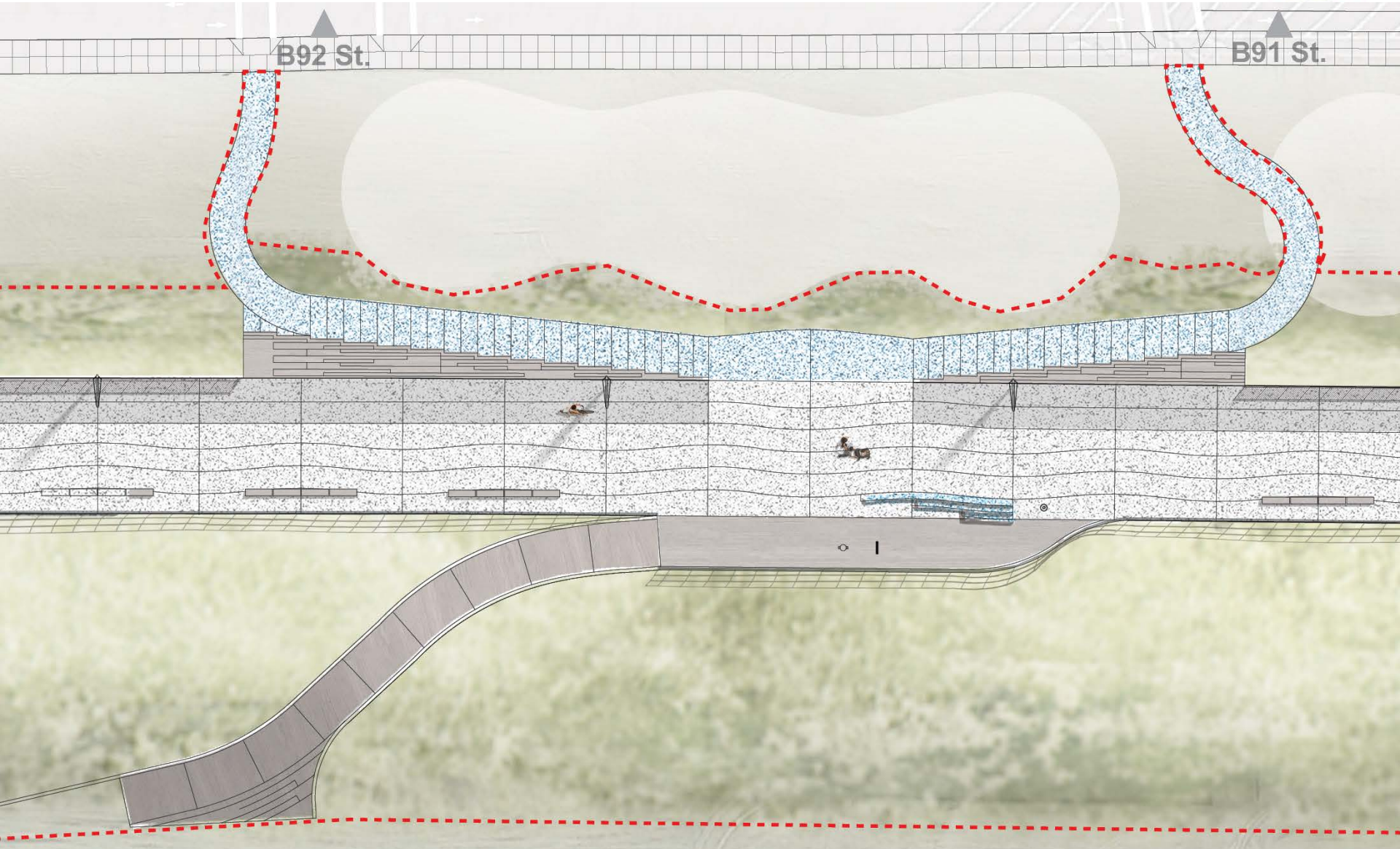
Phase 1 Scope



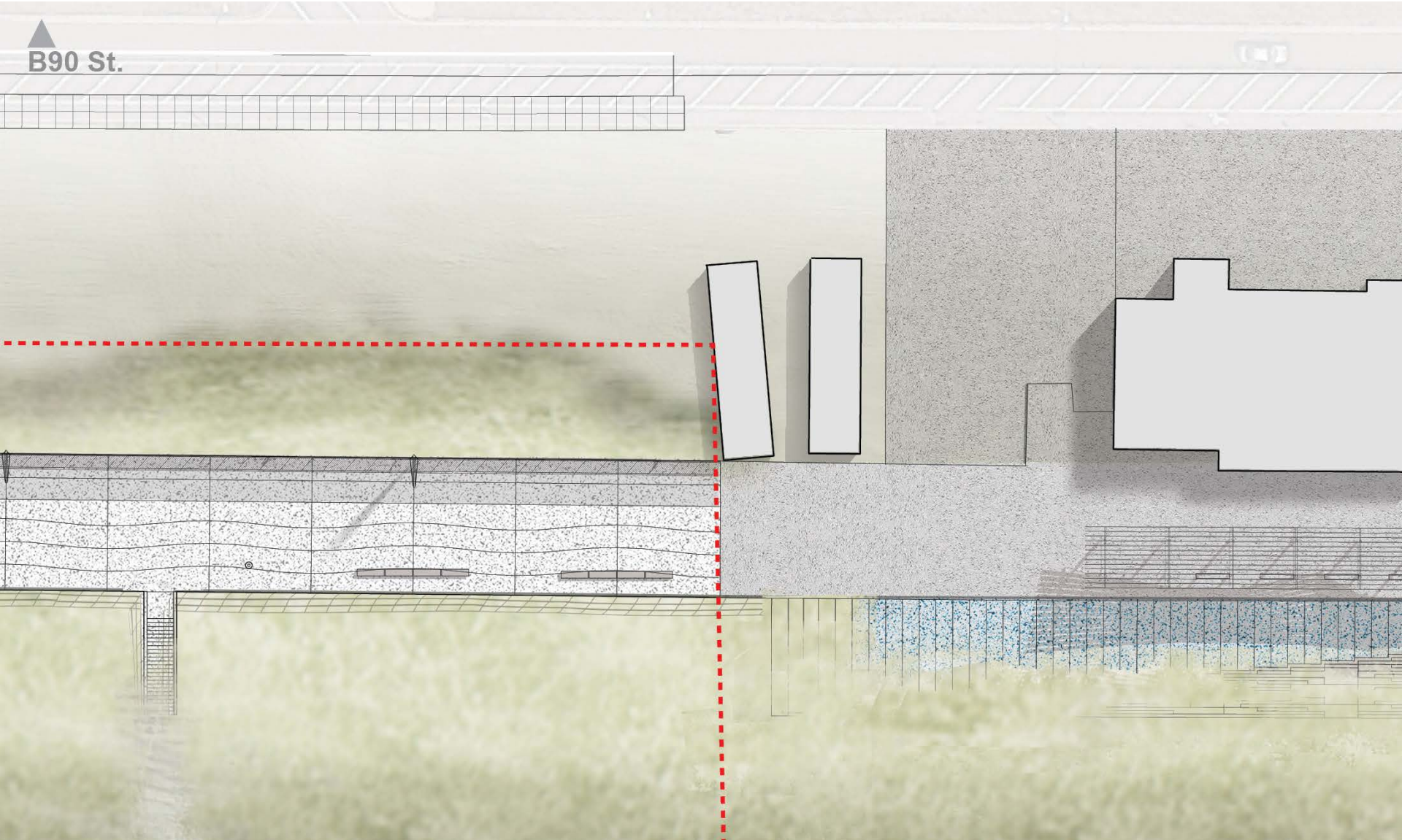
Phase 1 Scope



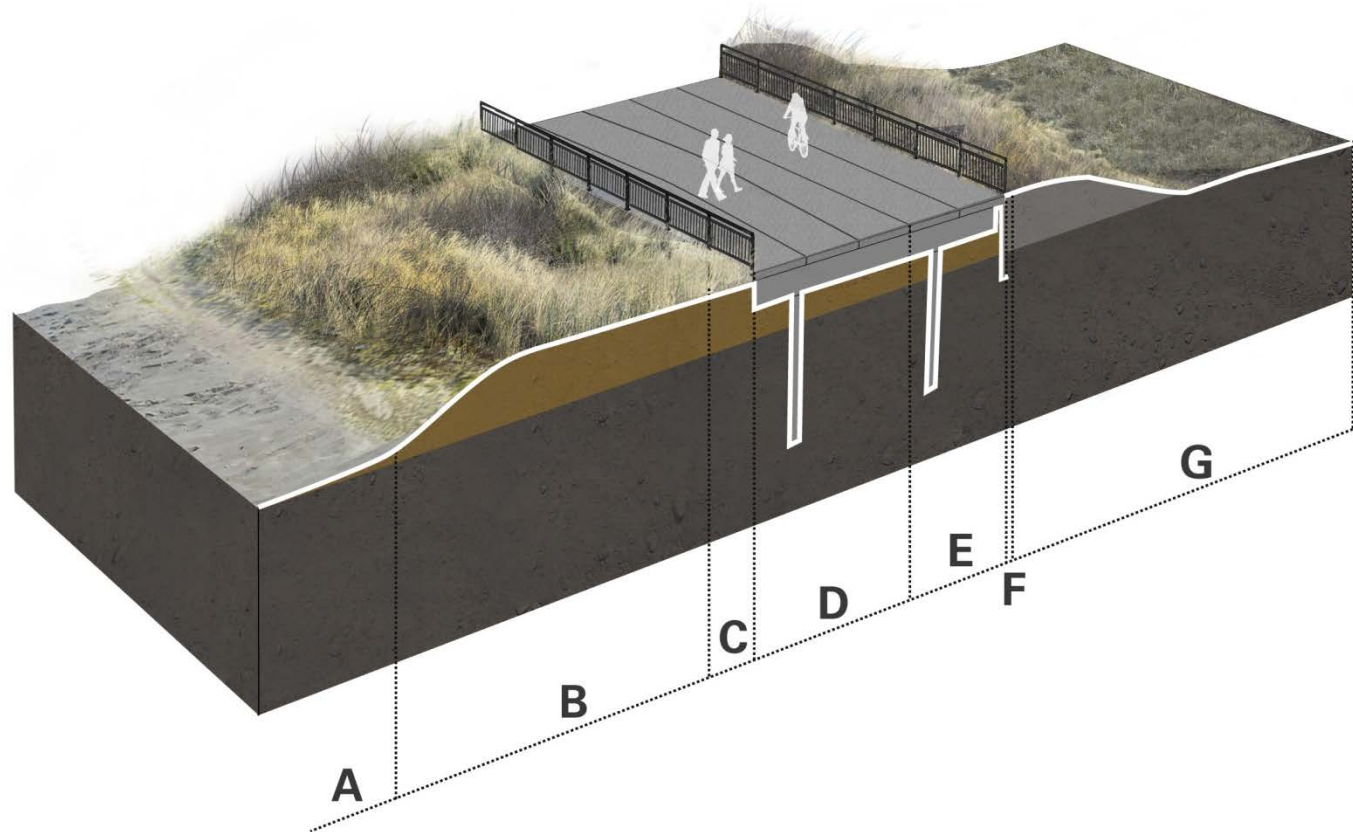
Phase 1 Scope



Phase 1 Scope

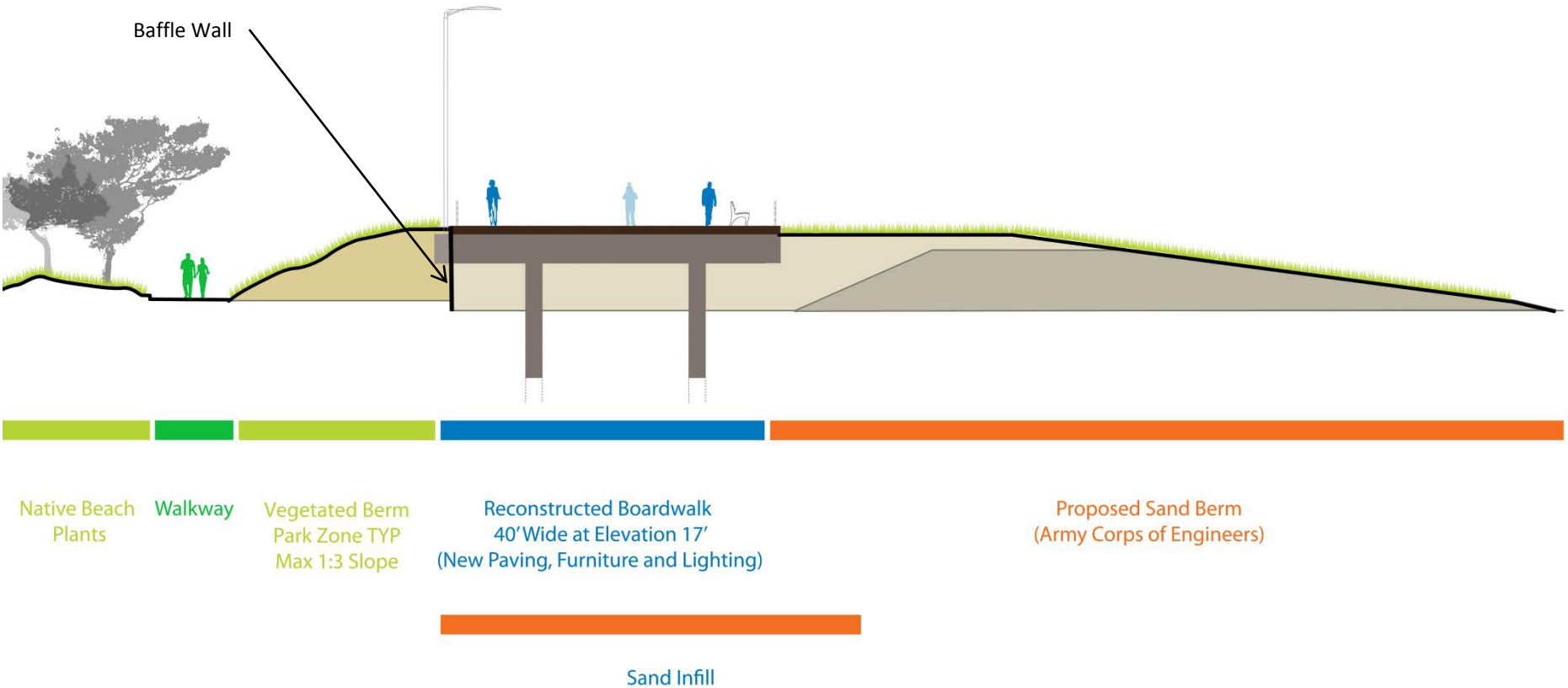


Axonometric Section - Typical

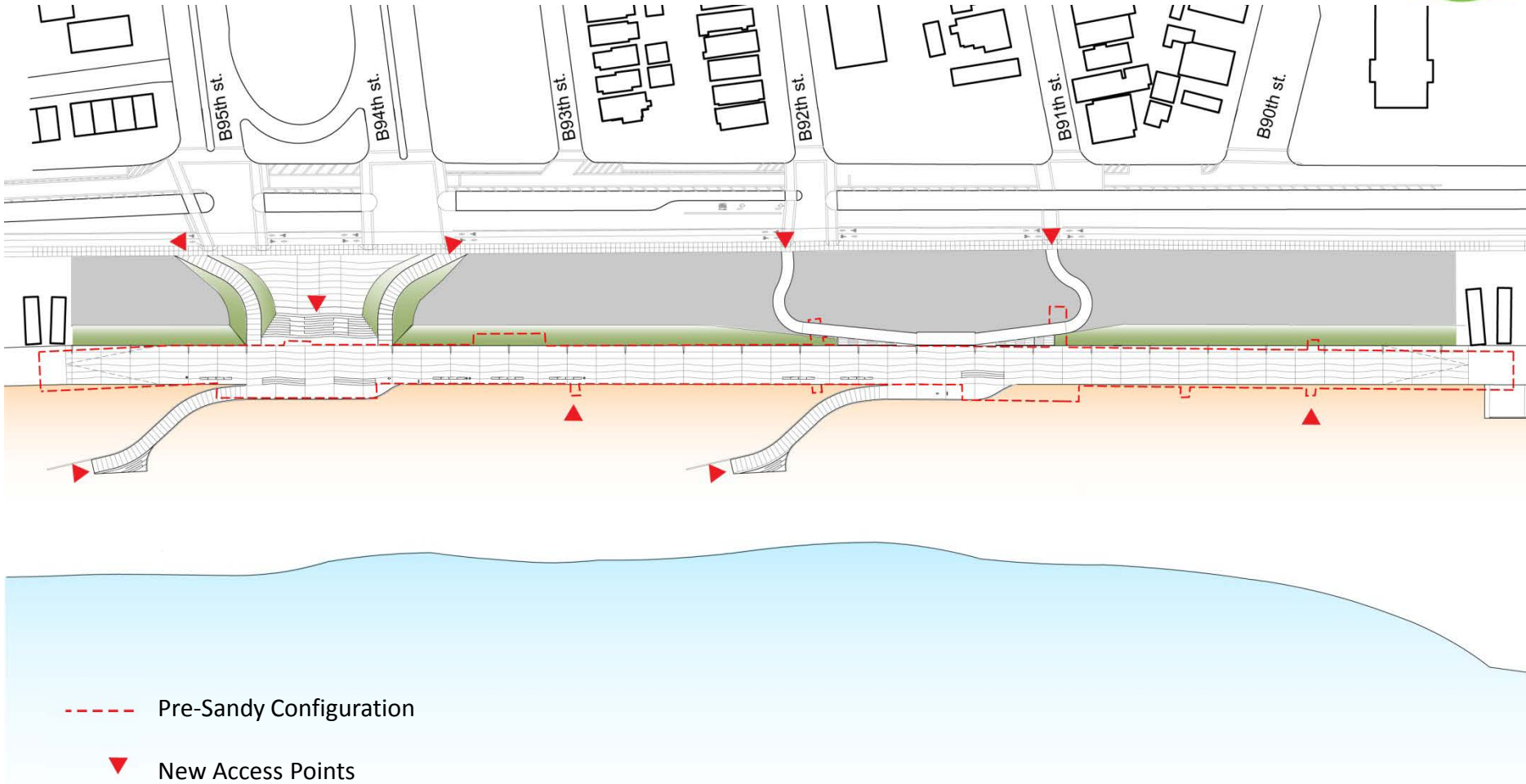


- A** Rockaway Beach
- B** Army Corps Sand Berm - Maritime Grassland
- C** Inter-dunal Swale
- D** Reconstructed Boardwalk
- E** Bike Lane
- F** Baffle Wall Below
- G** Vegetated Berm

Section - Typical



Plan Diagram Access (Pre/Post Sandy)



Phase 1 Access – B94th / B95th St



Phase 1 Access – B91st / B92nd



Beach 94th Street Rendering – Day



Beach 94th Street Rendering – Day



Comfort Station Approach – Day



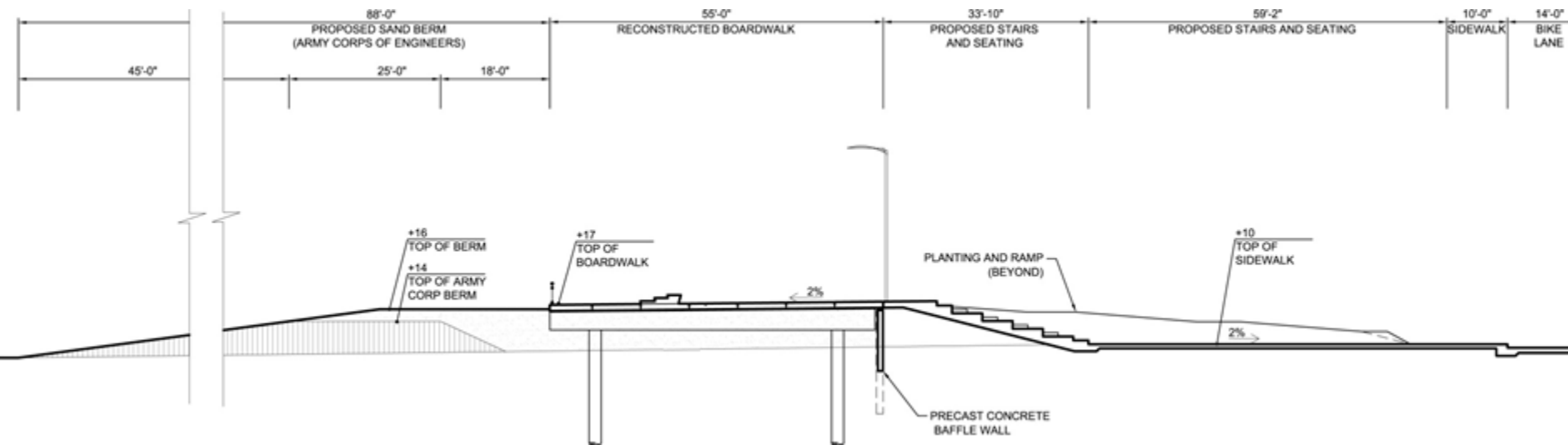
Comfort Station Approach – Day



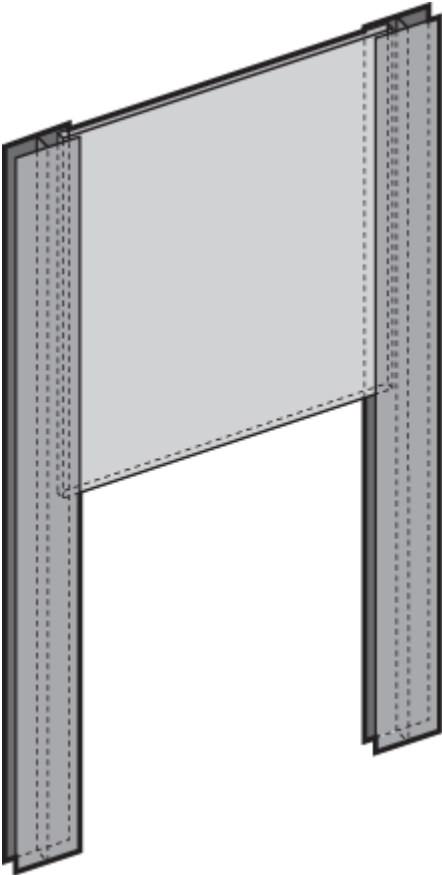
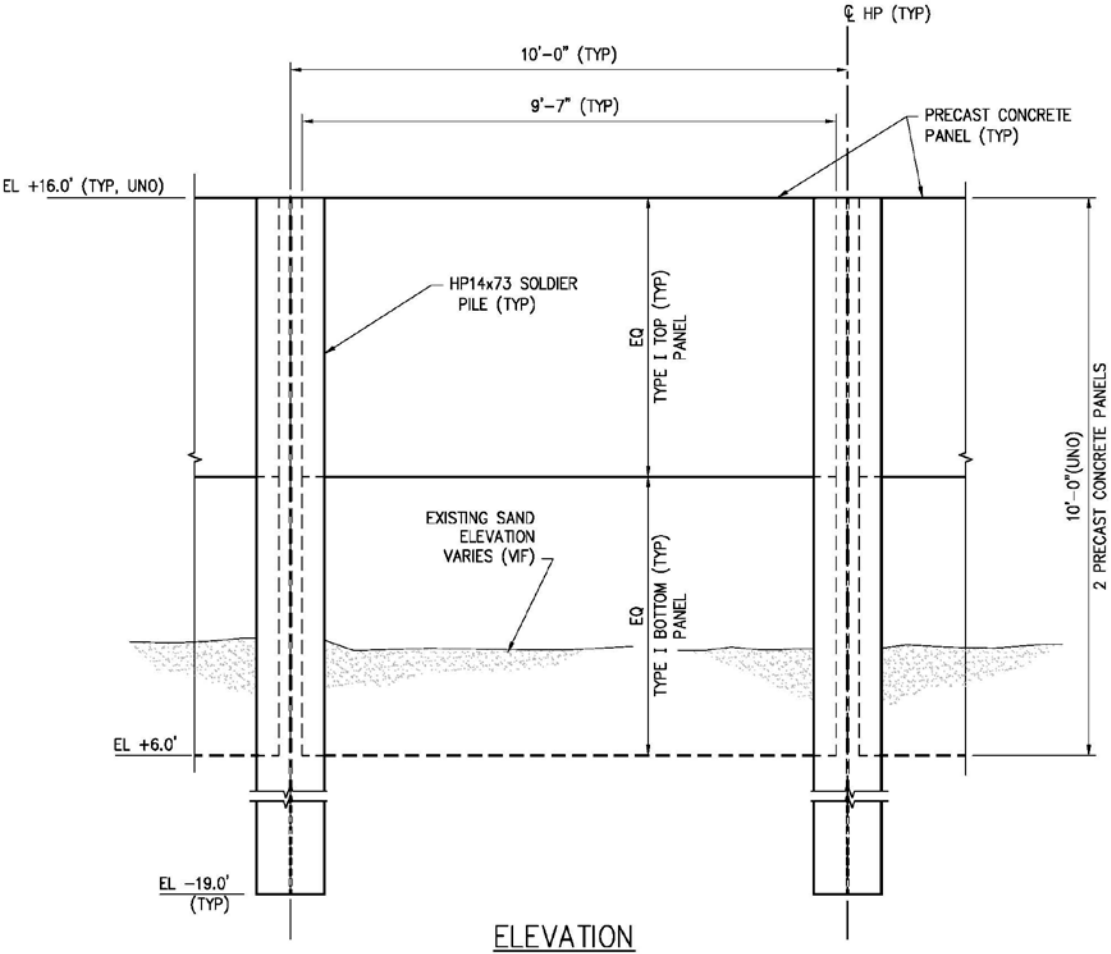
South Stair



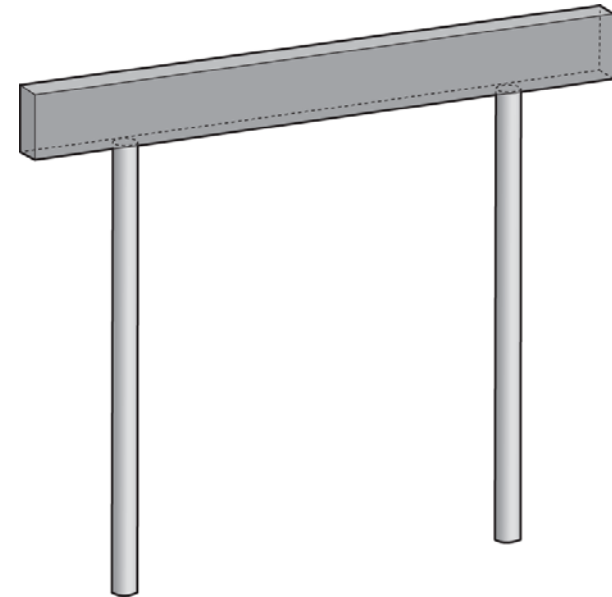
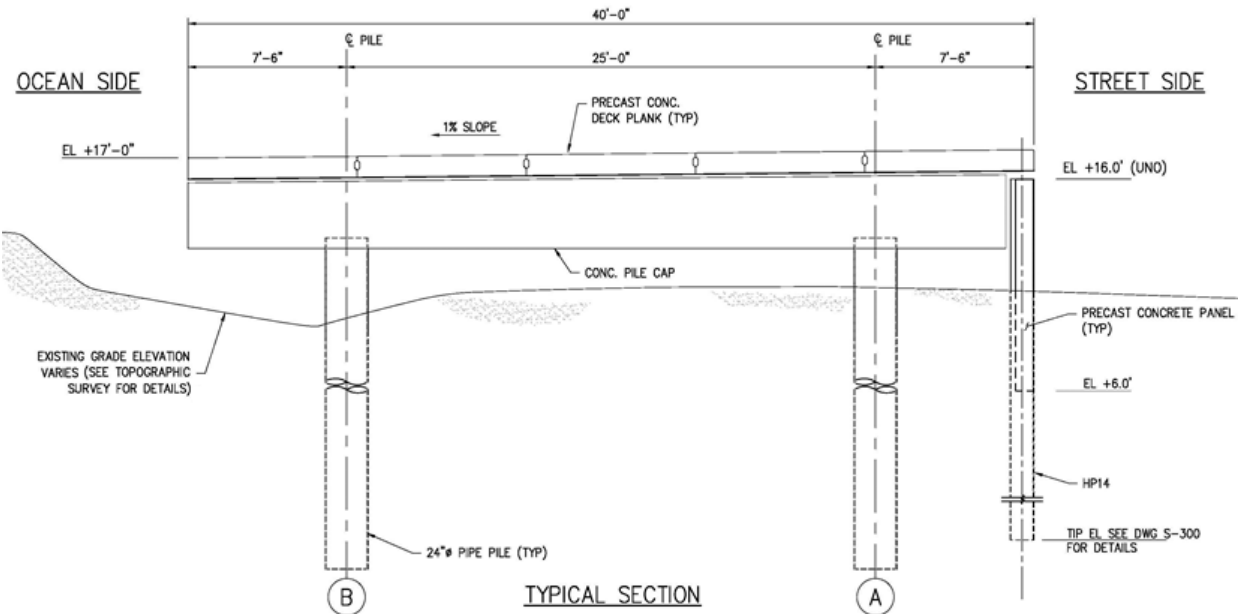
Access



Structural Drawings



Structural Drawings



Preliminary Materials for Study



Typical for Smooth Finish:



Typical Precast Plank Finish Sample
50% White Cement, Lightly Sand Blasted
US Concrete (1311081513)

Typical for Rough Finish:



Boardwalk Accent Sample
Wausau Tile, Inc.
ADA-120

Examples of Accent Details:



Boardwalk Accent Sample
Wausau Tile, Inc.
Engraved Concrete Paver (EG)
(submitted for graphic technique only – not for color)



Boardwalk Accent Sample
Wausau Tile, Inc.
Pressed Concrete Paver
ADA-40

Examples of Colored Tile:



Boardwalk Accent Sample
Wausau Tile, Inc.
Pressed Concrete Paver
Yellow Washed Glass in Yellow tinted
matrix (E10-097)
8" Hexagonal



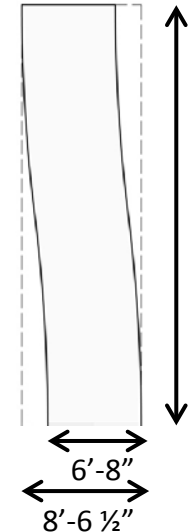
Boardwalk Accent Sample
Wausau Tile, Inc.
Pressed Concrete Paver
Orange Washed Glass in Orange
tinted matrix (E10-096)
8" Hexagonal



Blue Glass aggregate concrete
For proposed ramps



Green Glass aggregate concrete
For proposed street numbers



Furniture



NYC Drinking Fountain



Trash and Recycle Bins



1964 World's Fair Bench (Back and Backless)



Silver Foot Shower



Concrete Step Bench

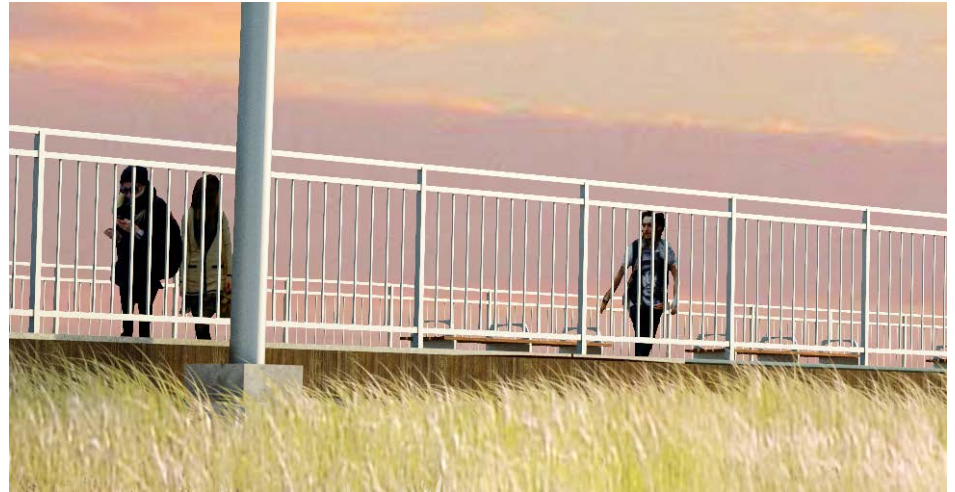


Existing Island wood seating

Furniture



City Light



Vertical Railing



Bike Rack



Construction Management Overview

- Schedule and Current Status
- Community Engagement
- Workforce Opportunities

Target Construction Schedule



Phase:

Phase 1 (**B86-B97**)

Phase 2 (**B98-B108**):

Phase 3 (**B108-B126**):

Phase 4a (**B73-B86**):

Phase 4b (**B60-B73**)

Phase 5a (**B39-B60**):

Phase 5b (**B19-B39**):

Target Start:

Spring 2014

Summer 2014

Fall 2014

Spring 2015

Late 2014*

Fall 2015*

Fall 2016*

Target End:

Memorial Day 2015

July 4th 2015

Memorial Day 2016

Memorial Day 2016

Memorial Day 2016*

Memorial Day 2016*

Memorial Day 2017*

*Piping Plover Moratorium (Apr – Sept)

Schedule Look Ahead



Bidding and Procurement: Currently Out To Bid

- New Pipe Pile Fabrication (Boardwalk)
- New H Pile Fabrication (Baffle Wall)
- Site Clearing, Selected Demolition

Bidding and Procurement: January/February 2014

- Pile and Baffle Wall Installation
- Dune Enhancement
- Procure Pile Caps
- Boardwalk Pavement
- Amenities

Spring 2014

- Contractors Onsite
- All work areas will be secured with continuous chain link fencing and gates

Summer 2014

- Ongoing Construction
- Temporary Entrances Through Construction Zone Will Allow Beach Access at Current Locations (B86, B90, B92, B94, B97, B101, B103, B106 and B108)



Construction Planning and Updates

- Neighborhood Meetings – individual meetings for each phase to inform residents about upcoming construction logistics
- Project Updates – posted to DPR website
- Construction Field Office – March 17

Construction Field Office

- Provide information and resources about job opportunities
- Serve as a referral center for employment opportunities, training, educational and technical courses
- Seek community partnerships and referrals
- Liaise between local, minority, and women applicants as well as Trade Unions and Trade Associations



EDC will release a second round of RFQs in February

Neighborhood Job Outreach Nights

- February 12
- March 5
- March 26

*Locations TBD, will be publicized in advance

Section 3 LOCAL HIRING and M/WBE

Wrap Up

